

MRE11 Polyclonal antibody

Catalog Number: 10744-1-AP

11 Publications

Basic Information

Catalog Number:

10744-1-AP

Size:

150ul, Concentration: 400 ug/ml by Nanodrop and 200 ug/ml by Bradford method using BSA as the standard;

Source:

Rabbit

Isotype:

IgG

Immunogen Catalog Number:

AG1105

GenBank Accession Number:

BC005241

GeneID (NCBI):

4361

UNIPROT ID:

P49959

Full Name:

MRE11 meiotic recombination 11 homolog A (S. cerevisiae)

Calculated MW:

81 kDa

Observed MW:

81 kDa

Purification Method:

Antigen affinity purification

Recommended Dilutions:

WB 1:500-1:2000

IP 0.5-4.0 ug for 1.0-3.0 mg of total protein lysate

IHC 1:20-1:200

Applications

Tested Applications:

WB, IHC, IP, ELISA

Cited Applications:

WB, IHC, IF, ChIP

Species Specificity:

human, mouse, rat

Cited Species:

human, mouse, rat

Note-IHC: suggested antigen retrieval with TE buffer pH 9.0; (*) Alternatively, antigen retrieval may be performed with citrate buffer pH 6.0

Positive Controls:

WB : HEK-293 cells, HT-1376 cells, HeLa cells, HepG2 cells

IP : HeLa cells,

IHC : human lymphoma tissue,

Background Information

Mre11 (meiotic recombination 11), also named as Mre11A, is a component of the MRN (MRE11/RAD50/NBS1) complex which is a versatile complex, playing a key role in the sensing, processing, and repair of DSBs. MRE11 possesses both endonuclease and 3'-5' exonuclease activity. It contains two DNA-binding domains (DBDs), enabling it to bind both single-stranded DNA (ssDNA) and double-stranded DNA (dsDNA). After DSBs, MRE11 is loaded onto DSBs sites and cleaves DNA by cooperating with CtBP (CtBP [C terminal binding protein] interacting protein) to initiate end resection. It's reported that MRE11 is over-expressed in breast cancers. (PMID:38128537; 22914783)

Notable Publications

Author	Pubmed ID	Journal	Application
Tao Zhang	36050397	Nat Commun	WB
C E Aiken	30791124	J Physiol	WB
Xin Zhang	35145081	Cell Death Dis	WB, IHC, ChIP

Storage

Storage:

Store at -20°C. Stable for one year after shipment.

Storage Buffer:

PBS with 0.02% sodium azide and 50% glycerol pH 7.3.

Aliquoting is unnecessary for -20°C storage

*** 20ul sizes contain 0.1% BSA

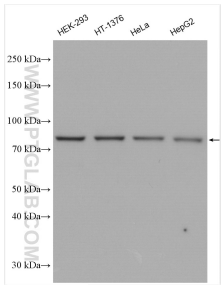
For technical support and original validation data for this product please contact:

T: 1 (888) 4PTGLAB (1-888-478-4522) (toll free in USA), or 1(312) 455-8498 (outside USA)

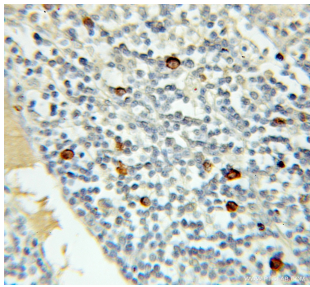
E: proteintech@ptglab.com
W: ptglab.com

This product is exclusively available under Proteintech Group brand and is not available to purchase from any other manufacturer.

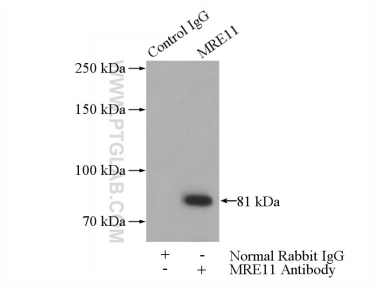
Selected Validation Data



Various lysates were subjected to SDS PAGE followed by western blot with 10744-1-AP (MRE11 antibody) at dilution of 1:1000 incubated at room temperature for 1.5 hours.



Immunohistochemical analysis of paraffin-embedded human lymphoma using 10744-1-AP (MRE11 antibody) at dilution of 1:50 (under 10x lens).



IP result of anti-MRE11 (IP:10744-1-AP, 4ug; Detection:10744-1-AP 1:600) with HeLa cells lysate 1200ug.