

For Research Use Only

PRIM1 Polyclonal antibody

Catalog Number: 10773-1-AP

10 Publications



Basic Information

Catalog Number:

10773-1-AP

Size:

150ul, Concentration: 133 ug/ml by Bradford method using BSA as the standard;

Source:

Rabbit

Isotype:

IgG

Immunogen Catalog Number:

AG1124

GenBank Accession Number:

BC005266

GeneID (NCBI):

5557

UNIPROT ID:

P49642

Full Name:

primase, DNA, polypeptide 1 (49kDa)

Calculated MW:

50 kDa

Observed MW:

50 kDa

Purification Method:

Antigen affinity purification

Recommended Dilutions:

WB 1:500-1:3000

IP 0.5-4.0 ug for 1.0-3.0 mg of total protein lysate

IHC 1:20-1:200

IF/ICC 1:50-1:500

Applications

Tested Applications:

WB, IHC, IF/ICC, IP, ELISA

Cited Applications:

WB, IHC

Species Specificity:

human, mouse, rat

Cited Species:

human, mouse

Positive Controls:

WB : HeLa cells, Sp2/0 cells, K-562 cells, HepG2 cells, Jurkat cells

IP : HeLa cells,

IHC : human lymphoma tissue, human thyroid cancer tissue

IF/ICC : HeLa cells,

Note-IHC: suggested antigen retrieval with TE buffer pH 9.0; (*) Alternatively, antigen retrieval may be performed with citrate buffer pH 6.0

Background Information

DNA replication in human cells is initiated by a complex apparatus containing a DNA polymerase-alpha/primase complex. Primase synthesizes oligoribonucleotides that serve as primers for the initiation of DNA synthesis. It plays a role in both the initiation of DNA replication and the synthesis of Okazaki fragments for lagging strand synthesis. PRIM1 is a subunit of this complex.

Notable Publications

| Author | Pubmed ID | Journal | Application |
|----------------|-----------|-------------------|-------------|
| Arthur J Zaugg | 34718732 | Nucleic Acids Res | WB |
| Zachary Mirman | 35316728 | DNA Repair (Amst) | WB |
| Zachary Mirman | 35027730 | Nat Cell Biol | WB |

Storage

Storage:

Store at -20°C. Stable for one year after shipment.

Storage Buffer:

PBS with 0.02% sodium azide and 50% glycerol pH 7.3.

Aliquoting is unnecessary for -20°C storage

*** 20ul sizes contain 0.1% BSA

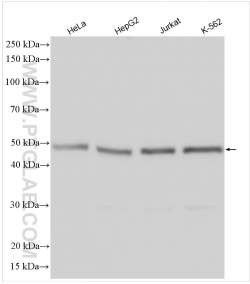
For technical support and original validation data for this product please contact:

T: 1 (888) 4PTGLAB (1-888-478-4522) (toll free in USA), or 1(312) 455-8498 (outside USA)

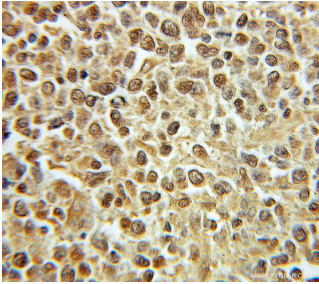
E: proteintech@ptglab.com
W: ptglab.com

This product is exclusively available under Proteintech Group brand and is not available to purchase from any other manufacturer.

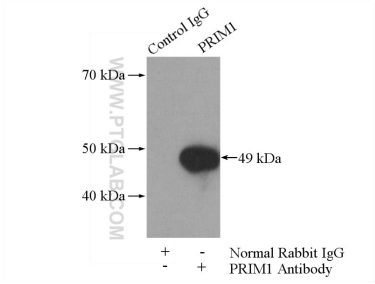
Selected Validation Data



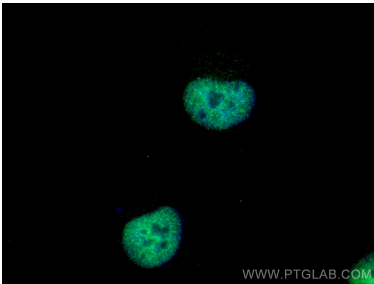
Various lysates were subjected to SDS PAGE followed by western blot with 10773-1-AP (PRIM1 antibody) at dilution of 1:1500 incubated at room temperature for 1.5 hours.



Immunohistochemical analysis of paraffin-embedded human lymphoma using 10773-1-AP (PRIM1 antibody) at dilution of 1:100 (under 10x lens).



IP result of anti-PRIM1 (IP:10773-1-AP, 4ug; Detection:10773-1-AP 1:300) with HeLa cells lysate 2800ug.



Immunofluorescent analysis of (4% PFA) fixed HeLa cells using PRIM1 antibody (10773-1-AP) at dilution of 1:200 and CoraLite®488-Conjugated Goat Anti-Rabbit IgG(H+L).