

For Research Use Only

# BLVRA Polyclonal antibody

Catalog Number: 10775-1-AP

Featured Product

3 Publications



## Basic Information

### Catalog Number:

10775-1-AP

### Size:

150ul, Concentration: 427 ug/ml by Bradford method using BSA as the standard;

### Source:

Rabbit

### Isotype:

IgG

### Immunogen Catalog Number:

AG1166

### GenBank Accession Number:

BC008456

### GeneID (NCBI):

644

### UNIPROT ID:

P53004

### Full Name:

biliverdin reductase A

### Calculated MW:

33.2 kDa

### Observed MW:

37-40 kDa, 66 kDa

### Purification Method:

Antigen affinity purification

### Recommended Dilutions:

WB 1:500-1:2000

IHC 1:50-1:200

IF/ICC 1:50-1:500

## Applications

### Tested Applications:

WB, IHC, IF/ICC, ELISA

### Cited Applications:

WB, IHC, IF

### Species Specificity:

human, mouse

### Cited Species:

human

**Note-IHC: suggested antigen retrieval with TE buffer pH 9.0; (\*) Alternatively, antigen retrieval may be performed with citrate buffer pH 6.0**

### Positive Controls:

**WB**: HeLa cells, L02 cells, mouse liver tissue, HepG2 cells, HuH-7 cells, PC-3 cells, SH-SY5Y cells

**IHC**: human prostate cancer tissue, human pancreas tissue

**IF/ICC**: L02 cells,

## Background Information

BLVRA (Biliverdin reductase A) is also named as BLVR, BVR and belongs to the biliverdin reductase subfamily. It catalyzes the conversion of biliverdin to bilirubin in the presence of NADPH or NADH. This protein can exist as a dimer (PMID:11773068). Defects in BLVRA are the cause of hyperbiliverdinemia (HBLVD).

## Notable Publications

Author	Pubmed ID	Journal	Application
Seyedeh Zahra Shahrokhi	34924900	EXCLI J	WB
Damian Klóska	31704097	Arch Biochem Biophys	IF
Haiyan Mao	32425592	Cancer Manag Res	WB, IHC

## Storage

### Storage:

Store at -20°C. Stable for one year after shipment.

### Storage Buffer:

PBS with 0.02% sodium azide and 50% glycerol pH 7.3.

Aliquoting is unnecessary for -20°C storage

\*\*\* 20ul sizes contain 0.1% BSA

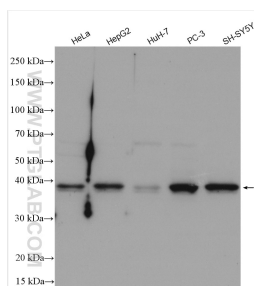
For technical support and original validation data for this product please contact:

T: 1 (888) 4PTGLAB (1-888-478-4522) (toll free in USA), or 1(312) 455-8498 (outside USA)

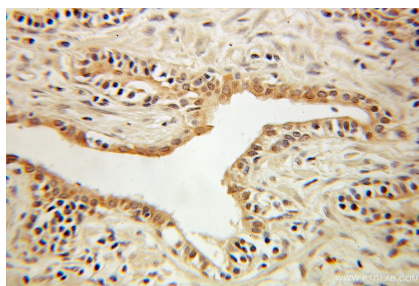
E: [proteintech@ptglab.com](mailto:proteintech@ptglab.com)  
W: [ptglab.com](http://ptglab.com)

This product is exclusively available under Proteintech Group brand and is not available to purchase from any other manufacturer.

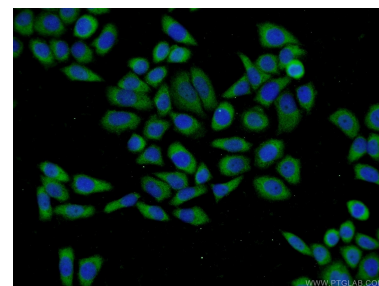
## Selected Validation Data



Various lysates were subjected to SDS PAGE followed by western blot with 10775-1-AP (BLVRA antibody) at dilution of 1:1000 incubated at room temperature for 1.5 hours.



Immunohistochemical analysis of paraffin-embedded human prostate cancer using 10775-1-AP (BLVRA antibody) at dilution of 1:100 (under 10x lens).



Immunofluorescent analysis of L02 cells using 10775-1-AP (BLVRA antibody) at dilution of 1:50 and Alexa Fluor 488-conjugated Goat Anti-Rabbit IgG(H+L).