

For Research Use Only

ASF1A Polyclonal antibody

Catalog Number: 10784-1-AP

5 Publications



Basic Information

Catalog Number:

10784-1-AP

Size:

150ul, Concentration: 1000 ug/ml by Nanodrop and 533 ug/ml by Bradford method using BSA as the standard;

Source:

Rabbit

Isotype:

IgG

Immunogen Catalog Number:

AG1233

GenBank Accession Number:

BC010878

GeneID (NCBI):

25842

UNIPROT ID:

Q9Y294

Full Name:

ASF1 anti-silencing function 1 homolog A (S. cerevisiae)

Calculated MW:

204 aa, 23 kDa

Observed MW:

23 kDa

Purification Method:

Antigen affinity purification

Recommended Dilutions:

WB 1:500-1:1000

IP 0.5-4.0 ug for 1.0-3.0 mg of total protein lysate

IHC 1:10-1:100

Applications

Tested Applications:

WB, IP, IHC, ELISA

Cited Applications:

WB, IHC, IF, IP

Species Specificity:

human

Cited Species:

human, mouse

Positive Controls:

WB : HeLa cells, HEK-293 cells

IP : HEK-293 cells,

IHC : human lymphoma tissue,

Note-IHC: suggested antigen retrieval with TE buffer pH 9.0; (*) Alternatively, antigen retrieval may be performed with citrate buffer pH 6.0

Background Information

Anti-silencing function 1, S.cerevisiae, homolog of A(SF1A) is a histone chaperone that has a crucial role in the remodeling of chromatin structure during replication, DNA repair, and cellular senescence. It promotes chromatin assembly in replication-dependent manner by cooperation with chromatin assembly factor1(CAF-1), and cooperates with HIRA in replication-independent manner. It's required for the formation of senescence-associated heterochromatin foci(SAHF) and efficient senescence-associated cell cycle exit.

Notable Publications

Author	Pubmed ID	Journal	Application
Jiang Wei-Qin WQ	21347226	PLoS One	IF
Xuemei Wang	34906203	Epigenetics Chromatin	WB,IF
Ping Sun	39584133	Front Pharmacol	IHC

Storage

Storage:

Store at -20°C. Stable for one year after shipment.

Storage Buffer:

PBS with 0.02% sodium azide and 50% glycerol, pH7.3

Aliquoting is unnecessary for -20°C storage

*** 20ul sizes contain 0.1% BSA

For technical support and original validation data for this product please contact:

T: 1 (888) 4PTGLAB (1-888-478-4522) (toll free in USA), or 1(312) 455-8498 (outside USA)

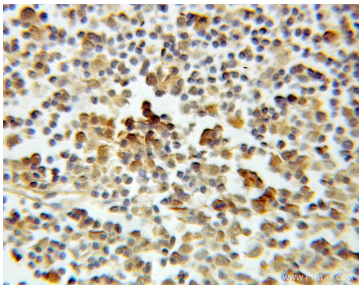
E: proteintech@ptglab.com
W: ptglab.com

This product is exclusively available under Proteintech Group brand and is not available to purchase from any other manufacturer.

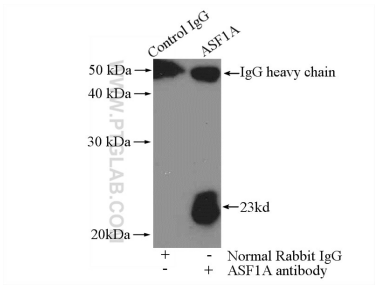
Selected Validation Data



HeLa cells were subjected to SDS PAGE followed by western blot with 10784-1-AP (ASF1A antibody) at dilution of 1:600 incubated at room temperature for 1.5 hours.



Immunohistochemical analysis of paraffin-embedded human lymphoma using 10784-1-AP (ASF1A antibody) at dilution of 1:10 (under 10x lens).



IP result of anti-ASF1A (IP:10784-1-AP, 4ug; Detection:10784-1-AP 1:800) with HEK-293 cells lysate 2800ug.