

For Research Use Only

Kallikrein 2 Polyclonal antibody

Catalog Number: 10812-1-AP **2 Publications**



Basic Information

Catalog Number: 10812-1-AP	GenBank Accession Number: BC005196	Purification Method: Antigen affinity purification
Size: 150ul , Concentration: 400 µg/ml by Nanodrop and 250 µg/ml by Bradford method using BSA as the standard;	GeneID (NCBI): 3817	Recommended Dilutions: WB 1:200-1:1000 IHC 1:20-1:200
Source: Rabbit	Full Name: kallikrein-related peptidase 2	
Isotype: IgG	Calculated MW: 28 kDa	
Immunogen Catalog Number: AG1077	Observed MW: 29 kDa	

Applications

Tested Applications: IHC, WB, ELISA	Positive Controls: WB : mouse pancreas tissue, IHC : human prostate cancer tissue,
Cited Applications: IHC, WB	
Species Specificity: human, mouse	
Cited Species: human	
Note-IHC: suggested antigen retrieval with TE buffer pH 9.0; (*) Alternatively, antigen retrieval may be performed with citrate buffer pH 6.0	

Background Information

KLK2(Kallikrein-2) is also named as hGK-1 and belongs to the Kallikrein subfamily. It plays a role in prostate cancer susceptibility and this role may be realized at least in part by the induction of increases in its production. It also may mediate tumor growth and invasion by participating in proteolytic cascades. This protein has 4 isoforms produced by alternative splicing with the molecular weight of 29 kDa, 25 kDa, 18 kDa and 17 kDa.

Notable Publications

Author	Pubmed ID	Journal	Application
Shuai Ma	35939916	J Photochem Photobiol B	IHC, WB
Miki Naito	36583514	Cancer Med	WB

Storage

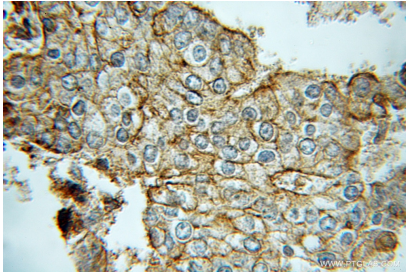
Storage:
Store at -20°C. Stable for one year after shipment.
Storage Buffer:
PBS with 0.02% sodium azide and 50% glycerol pH 7.3.
Aliquoting is unnecessary for -20°C storage

*** 20ul sizes contain 0.1% BSA

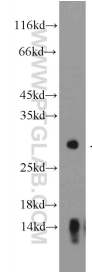
For technical support and original validation data for this product please contact:
T: 1 (888) 4PTGLAB (1-888-478-4522) (toll free in USA), or 1(312) 455-8498 (outside USA)
E: proteintech@ptglab.com
W: ptglab.com

This product is exclusively available under Proteintech Group brand and is not available to purchase from any other manufacturer.

Selected Validation Data



Immunohistochemical analysis of paraffin-embedded human prostate cancer using 10812-1-AP (Kallikrein 2 antibody) at dilution of 1:100 (under 10x lens).



mouse pancreas tissue were subjected to SDS PAGE followed by western blot with 10812-1-AP (Kallikrein 2 antibody at dilution of 1:300 incubated at room temperature for 1.5 hours.