

For Research Use Only

# Kallikrein 1 Polyclonal antibody

Catalog Number: 10815-1-AP **3 Publications**



## Basic Information

<b>Catalog Number:</b> 10815-1-AP	<b>GenBank Accession Number:</b> BC005313	<b>Purification Method:</b> Antigen affinity purification
<b>Size:</b> 150ul , Concentration: 300 µg/ml by Nanodrop and 140 µg/ml by Bradford method using BSA as the standard;	<b>GeneID (NCBI):</b> 3816	<b>Recommended Dilutions:</b> WB 1:500-1:1000 IP 0.5-4.0 ug for IP and 1:500-1:1000 for WB IHC 1:20-1:200
<b>Source:</b> Rabbit	<b>Full Name:</b> kallikrein 1	
<b>Isotype:</b> IgG	<b>Calculated MW:</b> 29 kDa	
<b>Immunogen Catalog Number:</b> AG1119	<b>Observed MW:</b> 45-50 kDa	

## Applications

<b>Tested Applications:</b> IHC, IP, WB, ELISA	<b>Positive Controls:</b>
<b>Cited Applications:</b> IHC, WB	<b>WB:</b> A375 cells, BxPC-3 cells
<b>Species Specificity:</b> human	<b>IP:</b> BxPC-3 cells,
<b>Cited Species:</b> human	<b>IHC:</b> human pancreas cancer tissue,

**Note-IHC: suggested antigen retrieval with TE buffer pH 9.0; (\*) Alternatively, antigen retrieval may be performed with citrate buffer pH 6.0**

## Background Information

KLK1 (tissue kallikrein 1) is a member of the tissue kallikrein family of serine proteases and is the primary kinin-generating enzyme in human airways. It is involved in the control of ionic transport in the renal tubule, an action that may not be kinin-mediated. This protein has 2 isoforms produced by alternative splicing.

## Notable Publications

Author	Pubmed ID	Journal	Application
Li Yajuan Y	23935844	PLoS One	WB
Yu Hui-Zhen HZ	21959973	Mol Cell Biochem	WB
Cerutti Janete MJM	20926528	J Clin Endocrinol Metab	IHC

## Storage

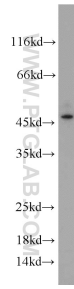
**Storage:**  
Store at -20°C. Stable for one year after shipment.  
**Storage Buffer:**  
PBS with 0.02% sodium azide and 50% glycerol pH 7.3.  
Aliquoting is unnecessary for -20°C storage

**\*\*\* 20ul sizes contain 0.1% BSA**

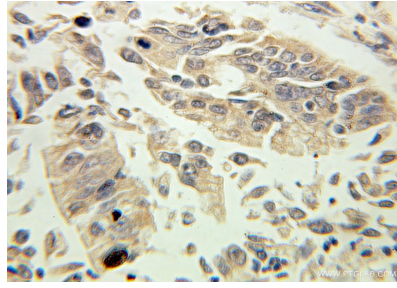
For technical support and original validation data for this product please contact:  
T: 1 (888) 4PTGLAB (1-888-478-4522) (toll free in USA), or 1(312) 455-8498 (outside USA) E: proteintech@ptglab.com W: ptglab.com

**This product is exclusively available under Proteintech Group brand and is not available to purchase from any other manufacturer.**

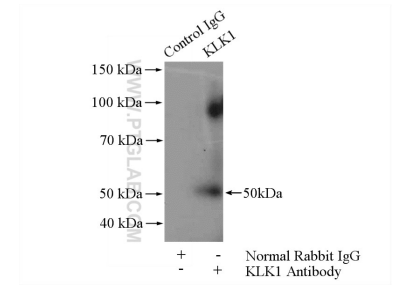
## Selected Validation Data



A375 cells were subjected to SDS PAGE followed by western blot with 10815-1-AP (Kallikrein 1 antibody) at dilution of 1:500 incubated at room temperature for 1.5 hours.



Immunohistochemical analysis of paraffin-embedded human pancreas cancer using 10815-1-AP (Kallikrein 1 antibody) at dilution of 1:100 (under 40x lens).



IP Result of anti-Kallikrein 1 (IP:10815-1-AP, 4ug; Detection:10815-1-AP 1:500) with BxPC-3 cells lysate 1520ug.