

For Research Use Only

# KPNA2 Polyclonal antibody

Catalog Number: 10819-1-AP

Featured Product

47 Publications



## Basic Information

### Catalog Number:

10819-1-AP

### Size:

150ul, Concentration: 240 ug/ml by Nanodrop;

### Source:

Rabbit

### Isotype:

IgG

### Immunogen Catalog Number:

AG1153

### GenBank Accession Number:

BC005978

### GeneID (NCBI):

3838

### UNIPROT ID:

P52292

### Full Name:

karyopherin alpha 2 (RAG cohort 1, importin alpha 1)

### Calculated MW:

57.8 kDa

### Observed MW:

55-58 kDa

### Purification Method:

Antigen affinity purification

### Recommended Dilutions:

WB: 1:500-1:3000

IHC: 1:20-1:400

IF/ICC: 1:50-1:500

## Applications

### Tested Applications:

WB, IHC, IF/ICC, ELISA

### Cited Applications:

WB, IHC, IF, IP, CoIP, ChIP

### Species Specificity:

human, mouse, rat

### Cited Species:

human, mouse, pig

**Note-IHC: suggested antigen retrieval with TE buffer pH 9.0; (\*) Alternatively, antigen retrieval may be performed with citrate buffer pH 6.0**

### Positive Controls:

WB: HepG2 cells, Jurkat cells, Raji cells

IHC: human colon cancer tissue,

IF/ICC: HepG2 cells,

## Background Information

KPNA2 (karyopherin  $\alpha 2$ ) is a nuclear import factor involved in the nucleocytoplasmic transport system. It is functionally involved in the tumor progression and is elevated in multiple cancers. KPNA2 expression may be a useful prognostic biomarker to monitor cancer prognosis.

## Notable Publications

Author	Pubmed ID	Journal	Application
Yi-Chao Liang	34508688	Am J Pathol	WB
Rui Shi	31487736	Gynecol Obstet Invest	WB
Hai-Ting Liu	34608273	Cell Death Differ	WB, IP

## Storage

### Storage:

Store at -20°C. Stable for one year after shipment.

### Storage Buffer:

PBS with 0.02% sodium azide and 50% glycerol, pH7.3

Aliquoting is unnecessary for -20°C storage

\*\*\* 20ul sizes contain 0.1% BSA

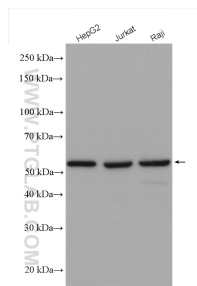
For technical support and original validation data for this product please contact:

T: 1 (888) 4PTGLAB (1-888-478-4522) (toll free in USA), or 1(312) 455-8498 (outside USA)

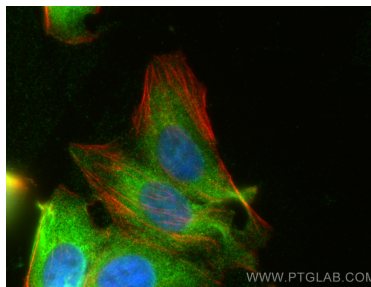
E: [proteintech@ptglab.com](mailto:proteintech@ptglab.com)  
W: [ptglab.com](http://ptglab.com)

This product is exclusively available under Proteintech Group brand and is not available to purchase from any other manufacturer.

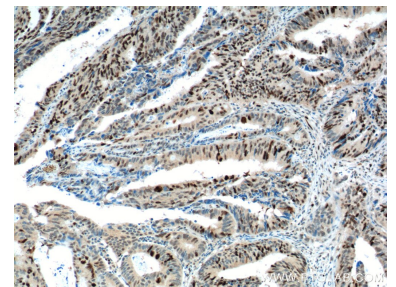
## Selected Validation Data



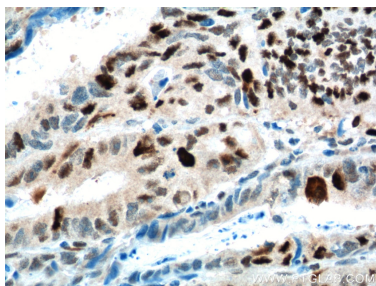
Various lysates were subjected to SDS PAGE followed by western blot with 10819-1-AP (KPNA2 antibody) at dilution of 1:1500 incubated at room temperature for 1.5 hours.



Immunofluorescent analysis of (4% PFA) fixed HepG2 cells using KPNA2 antibody (10819-1-AP) at dilution of 1:200 and CoraLite®488-Conjugated Goat Anti-Rabbit IgG(H+L), CL594-phalloidin (red).



Immunohistochemical analysis of paraffin-embedded human colon cancer tissue slide using 10819-1-AP (KPNA2 Antibody) at dilution of 1:200 (under 10x lens). Heat mediated antigen retrieval with Tris-EDTA buffer (pH 9.0).



Immunohistochemical analysis of paraffin-embedded human colon cancer tissue slide using 10819-1-AP (KPNA2 Antibody) at dilution of 1:200 (under 40x lens). Heat mediated antigen retrieval with Tris-EDTA buffer (pH 9.0).