

For Research Use Only

TPT1 Polyclonal antibody

Catalog Number: 10824-1-AP

Featured Product

8 Publications



Basic Information

Catalog Number:

10824-1-AP

Size:

150ul, Concentration: 600 ug/ml by Nanodrop;

Source:

Rabbit

Isotype:

IgG

Immunogen Catalog Number:

AG1268

GenBank Accession Number:

BC003352

GeneID (NCBI):

7178

UNIPROT ID:

P13693

Full Name:

tumor protein, translationally-controlled 1

Calculated MW:

22 kDa

Observed MW:

22-25 kDa

Purification Method:

Antigen affinity purification

Recommended Dilutions:

WB 1:1000-1:8000

IP 0.5-4.0 ug for 1.0-3.0 mg of total protein lysate

IHC 1:1000-1:4000

IF/ICC 1:200-1:800

Applications

Tested Applications:

WB, IHC, IF/ICC, IP, ELISA

Cited Applications:

WB, IHC, IF, IP

Species Specificity:

human, mouse, rat

Cited Species:

human, mouse, rat, pig

Note-IHC: suggested antigen retrieval with TE buffer pH 9.0; (*) Alternatively, antigen retrieval may be performed with citrate buffer pH 6.0

Positive Controls:

WB: A431 cells, mouse placenta tissue, MCF-7 cells

IP: human placenta tissue,

IHC: human colon cancer tissue,

IF/ICC: HeLa cells,

Background Information

The translationally controlled tumor protein (TPT1, also known as TCTP) is a highly conserved, abundantly expressed protein associated with cell growth and apoptosis regulation. It is overexpressed in most tumor cells and its down-regulation decreases the viability of those cells. This antibody detected 22-25 kDa TPT1 in lysates. An additional band around 50 kDa can also be observed occasionally, possibly representing the dimer form of TPT1.

Notable Publications

Author	Pubmed ID	Journal	Application
Nicolas Fischer	33259807	Chem Biol Interact	WB
Dongrong Zhu	33667688	Pharmacol Res	WB
Staflin Karin K	19558675	BMC Cancer	WB,IHC

Storage

Storage:

Store at -20°C. Stable for one year after shipment.

Storage Buffer:

PBS with 0.02% sodium azide and 50% glycerol pH 7.3.

Aliquoting is unnecessary for -20°C storage

*** 20ul sizes contain 0.1% BSA

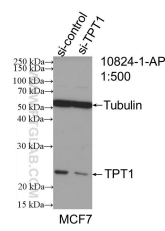
For technical support and original validation data for this product please contact:

T: 1 (888) 4PTGLAB (1-888-478-4522) (toll free in USA), or 1(312) 455-8498 (outside USA)

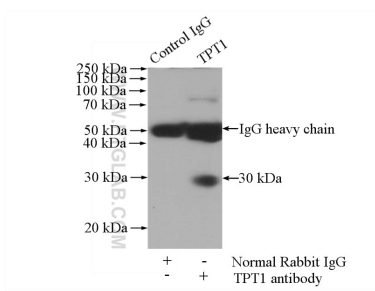
E: proteintech@ptglab.com
W: ptglab.com

This product is exclusively available under Proteintech Group brand and is not available to purchase from any other manufacturer.

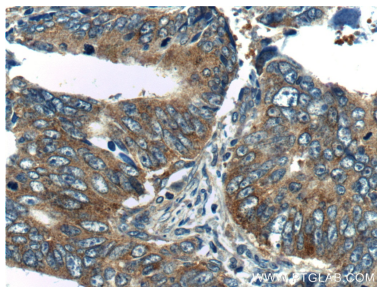
Selected Validation Data



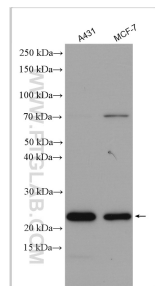
WB result of TPT1 antibody (10824-1-AP; 1:500; incubated at room temperature for 1.5 hours) with sh-Control and sh-TPT1 transfected MCF-7 cells.



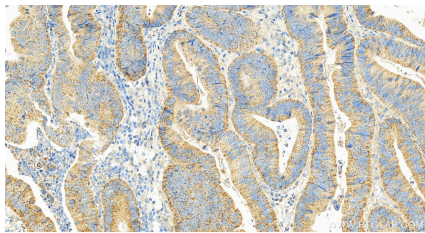
IP result of anti-TPT1 (IP:10824-1-AP, 4ug; Detection:10824-1-AP 1:500) with human placenta tissue lysate 1520ug.



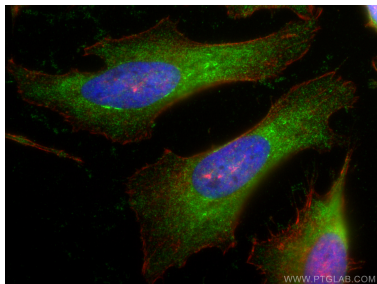
Immunohistochemical analysis of paraffin-embedded human colon cancer tissue slide using 10824-1-AP (TPT1 Antibody) at dilution of 1:200 (under 40x lens).



Various lysates were subjected to SDS PAGE followed by western blot with 10824-1-AP (TPT1 antibody) at dilution of 1:4000 incubated at room temperature for 1.5 hours.



Immunohistochemical analysis of paraffin-embedded human colon cancer tissue slide using 10824-1-AP (TPT1 antibody) at dilution of 1:2000 (under 20x lens). Heat mediated antigen retrieval with Tris-EDTA buffer (pH 9.0).



Immunofluorescent analysis of (-20°C Ethanol) fixed HeLa cells using TPT1 antibody (10824-1-AP) at dilution of 1:400 and CoraLite®488-Conjugated AffiniPure Goat Anti-Rabbit IgG(H+L), CL594-Phalloidin (red).