

For Research Use Only

Cytokeratin 18 Polyclonal antibody

Catalog Number: 10830-1-AP

Featured Product

124 Publications



Basic Information

Catalog Number:

10830-1-AP

Size:

150ul, Concentration: 550 ug/ml by Nanodrop;

Source:

Rabbit

Isotype:

IgG

Immunogen Catalog Number:

AG1260

GenBank Accession Number:

BC000180

GeneID (NCBI):

3875

UNIPROT ID:

P05783

Full Name:

keratin 18

Calculated MW:

48 kDa

Observed MW:

48 kDa

Purification Method:

Antigen affinity purification

Recommended Dilutions:

WB: 1:20000-1:100000

IP: 0.5-4.0 ug for 1.0-3.0 mg of total protein lysate

IHC: 1:200-1:1000

IF/ICC: 1:200-1:800

FC (Intra): 0.80 ug per 10⁶ cells in a 100 ul suspension

Applications

Tested Applications:

WB, IHC, IF/ICC, FC (Intra), IP, ELISA

Cited Applications:

WB, IHC, IF

Species Specificity:

human, mouse, rat

Cited Species:

human, mouse, rat, pig, monkey, bovine, sheep, goat, duck

Note-IHC: suggested antigen retrieval with TE buffer pH 9.0; (*) Alternatively, antigen retrieval may be performed with citrate buffer pH 6.0

Positive Controls:

WB: A431 cells, HeLa cells, K-562 cells, MCF-7 cells, MDA-MB-231 cells, mouse liver tissue, rat liver tissue

IP: A431 cells,

IHC: human breast cancer tissue, human appendicitis tissue, human colon cancer tissue, human endometrial cancer tissue, human kidney tissue, human liver cancer tissue, human lung cancer tissue, human ovary tumor tissue, human pancreas cancer tissue, human prostate hyperplasia tissue, human renal cell carcinoma tissue, human stomach cancer tissue, human tonsillitis tissue, mouse liver tissue, rat liver tissue

IF/ICC: HepG2 cells, HeLa cells

FC (Intra): HeLa cells,

Background Information

Keratins are a large family of proteins that form the intermediate filament cytoskeleton of epithelial cells, which are classified into two major sequence types. Type I keratins are a group of acidic intermediate filament proteins, including K9-K23, and the hair keratins Ha1-Ha8. Type II keratins are the basic or neutral counterparts to the acidic type I keratins, including K1-K8, and the hair keratins, Hb1-Hb6. KRT18, also named as CYK18, PIG46 and K18, is the most commonly found members of the intermediate filament gene family. KRT18 is a type I keratin which is found primarily in non squamous epithelia and is present in a majority of adenocarcinomas and ductal carcinomas but not in squamous cell carcinomas.

Notable Publications

Author	Pubmed ID	Journal	Application
Ahmed Ghallab	34685496	Cells	IHC
Linlin Zhang	32954430	J Anim Sci	IF
Wenbin Xu	33061289	Drug Des Devel Ther	IF

Storage

Storage:

Store at -20°C. Stable for one year after shipment.

Storage Buffer:

PBS with 0.02% sodium azide and 50% glycerol, pH7.3

Aliquoting is unnecessary for -20°C storage

*** 20ul sizes contain 0.1% BSA

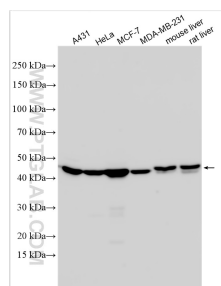
For technical support and original validation data for this product please contact:

T: 1 (888) 4PTGLAB (1-888-478-4522) (toll free in USA), or 1(312) 455-8498 (outside USA)

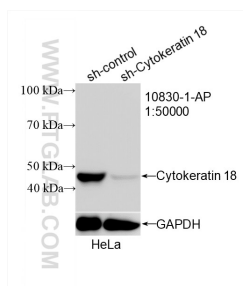
E: proteintech@ptglab.com
W: ptglab.com

This product is exclusively available under Proteintech Group brand and is not available to purchase from any other manufacturer.

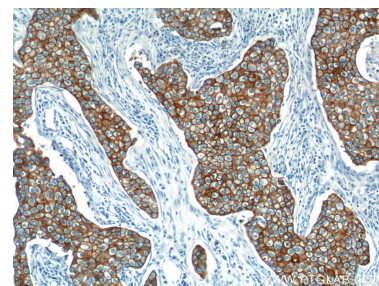
Selected Validation Data



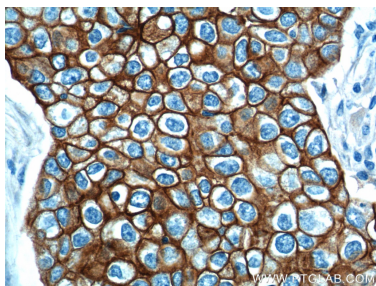
Various lysates were subjected to SDS PAGE followed by western blot with 10830-1-AP (Cytokeratin 18 antibody) at dilution of 1:50000 incubated at room temperature for 1.5 hours.



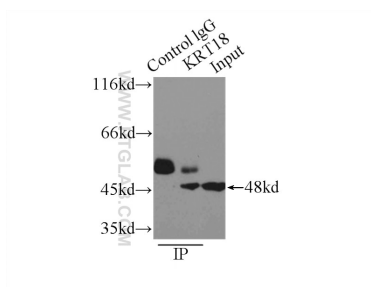
WB result of Cytokeratin 18 antibody (10830-1-AP; 1:50000; incubated at room temperature for 1.5 hours) with sh-Control and sh-Cytokeratin 18 transfected HeLa cells.



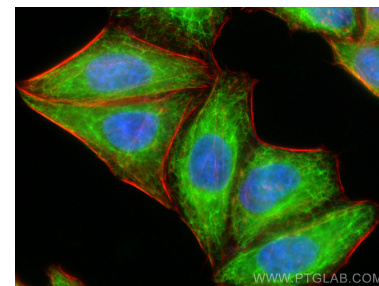
Immunohistochemical analysis of paraffin-embedded human breast cancer tissue slide using 10830-1-AP (Cytokeratin 18 antibody at dilution of 1:1000 (under 10x lens).



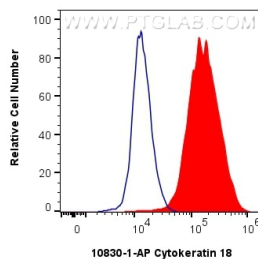
Immunohistochemical analysis of paraffin-embedded human breast cancer tissue slide using 10830-1-AP (Cytokeratin 18 antibody at dilution of 1:1000 (under 40x lens).



IP result of anti-Cytokeratin 18 (IP: 10830-1-AP, 3ug; Detection: 10830-1-AP 1:2000) with A431 cells lysate 3300ug.



Immunofluorescent analysis of (-20°C Ethanol) fixed HepG2 cells using Cytokeratin 18 antibody (10830-1-AP) at dilution of 1:400 and CoraLite®488-Conjugated Goat Anti-Rabbit IgG(H+L) (SA00013-2), CL594-phalloidin (red).



1x10⁶ HeLa cells were intracellularly stained with 0.8 ug Cytokeratin 18 Polyclonal antibody (10830-1-AP) and CoraLite®488-Conjugated AffiniPure Goat Anti-Rabbit IgG(H+L) (SA00013-2)(red), or 0.8 ug Rabbit IgG control Rabbit PolyAb (30000-O-AP) (blue). Cells were fixed with 4% PFA and permeabilized with Flow Cytometry Perm Buffer (PF00011-C).