

For Research Use Only

KIRREL2 Polyclonal antibody

Catalog Number: 10890-1-AP

2 Publications



Basic Information

Catalog Number:

10890-1-AP

Size:

150ul, Concentration: 500 ug/ml by Nanodrop and 413 ug/ml by Bradford method using BSA as the standard;

Source:

Rabbit

Isotype:

IgG

Immunogen Catalog Number:

AG1036

GenBank Accession Number:

BC007312

GeneID (NCBI):

84063

UNIPROT ID:

Q6UWL6

Full Name:

kin of IRRE like 2 (Drosophila)

Calculated MW:

75 kDa

Observed MW:

67 kDa, 90 kDa

Purification Method:

Antigen affinity purification

Recommended Dilutions:

WB 1:200-1:1000

Applications

Tested Applications:

WB, ELISA

Cited Applications:

IF

Species Specificity:

human, mouse, rat

Cited Species:

human

Positive Controls:

WB : mouse liver tissue,

Notable Publications

Author	Pubmed ID	Journal	Application
Alexander Atamian	39623220	Nat Protoc	IF
Alexander Atamian	38181749	Cell Stem Cell	IF

Storage

Storage:

Store at -20°C. Stable for one year after shipment.

Storage Buffer:

PBS with 0.02% sodium azide and 50% glycerol pH 7.3.

Aliquoting is unnecessary for -20°C storage

*** 20ul sizes contain 0.1% BSA

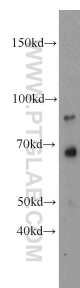
For technical support and original validation data for this product please contact:

T: 1 (888) 4PTGLAB (1-888-478-4522) (toll free in USA), or 1(312) 455-8498 (outside USA)

E: proteintech@ptglab.com
W: ptglab.com

This product is exclusively available under Proteintech Group brand and is not available to purchase from any other manufacturer.

Selected Validation Data



mouse liver tissue were subjected to SDS PAGE followed by western blot with 10890-1-AP (KIRREL2 antibody) at dilution of 1:300 incubated at room temperature for 1.5 hours.