

PLDN Polyclonal antibody

Catalog Number: 10891-2-AP

Featured Product

20 Publications

Basic Information

Catalog Number:

10891-2-AP

Size:

150ul, Concentration: 800 µg/ml by Nanodrop and 333 µg/ml by Bradford method using BSA as the standard;

Source:

Rabbit

Isotype:

IgG

Immunogen Catalog Number:

AG1337

GenBank Accession Number:

BC004819

GeneID (NCBI):

26258

UNIPROT ID:

Q9UL45

Full Name:

pallidin homolog (mouse)

Calculated MW:

23~24 kDa

Observed MW:

25 kDa

Purification Method:

Antigen affinity purification

Recommended Dilutions:

WB 1:1000-1:4000

IP 0.5-4.0 µg for 1.0-3.0 mg of total protein lysate

IHC 1:50-1:500

Applications

Tested Applications:

WB, IP, IHC, ELISA

Cited Applications:

WB, IP, IF

Species Specificity:

human, mouse, rat

Cited Species:

human, rat, mouse

Note-IHC: suggested antigen retrieval with TE buffer pH 9.0; (*) Alternatively, antigen retrieval may be performed with citrate buffer pH 6.0

Positive Controls:

WB : A431 cells, HeLa cells, K-562 cells

IP : K-562 cells,

IHC : human breast cancer tissue,

Background Information

Pallidin, also named as PLDN and PA, is involved in the development of lysosome-related organelles, such as melanosomes and platelet-dense granules. It may play a role in intracellular vesicle trafficking, particularly in the vesicle-docking and fusion process. Pallidin interacts with syntaxin-12 which is a t-SNARE protein that mediates vesicle docking and fusion. Pallidin is a 25 kDa subunit of the octamer BLOC-1.

Notable Publications

| Author | Pubmed ID | Journal | Application |
|----------------------|-----------|---------------------------|-------------|
| Meng-Hsuan Jerry Han | 25198678 | J Proteome Res | WB |
| Ankush Bortepawar | 33142804 | Cells | WB |
| Seunghyi Kook | 29190429 | Am J Respir Cell Mol Biol | WB |

Storage

Storage:

Store at -20°C. Stable for one year after shipment.

Storage Buffer:

PBS with 0.02% sodium azide and 50% glycerol pH 7.3.

Aliquoting is unnecessary for -20°C storage

*** 20ul sizes contain 0.1% BSA

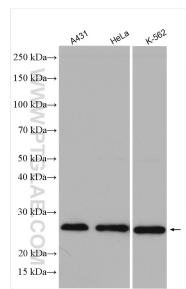
For technical support and original validation data for this product please contact:

T: 1 (888) 4PTGLAB (1-888-478-4522) (toll free in USA), or 1(312) 455-8498 (outside USA)

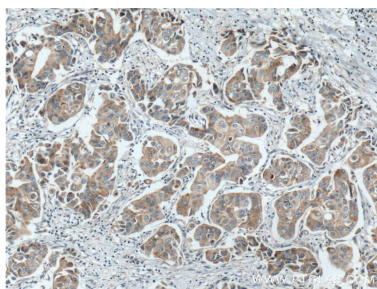
E: proteintech@ptglab.com
W: ptglab.com

This product is exclusively available under Proteintech Group brand and is not available to purchase from any other manufacturer.

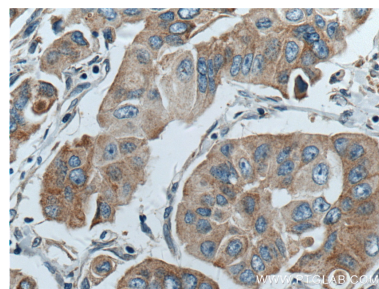
Selected Validation Data



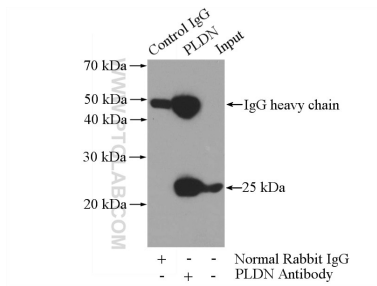
Various lysates were subjected to SDS PAGE followed by western blot with 10891-2-AP (PLDN antibody) at dilution of 1:2000 incubated at room temperature for 1.5 hours.



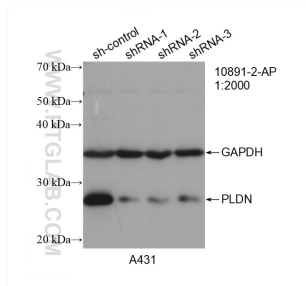
Immunohistochemical analysis of paraffin-embedded human breast cancer tissue slide using 10891-2-AP (PLDN antibody) at dilution of 1:200 (under 10x lens. Heat mediated antigen retrieval with Tris-EDTA buffer (pH 9.0)).



Immunohistochemical analysis of paraffin-embedded human breast cancer tissue slide using 10891-2-AP (PLDN antibody) at dilution of 1:200 (under 40x lens. Heat mediated antigen retrieval with Tris-EDTA buffer (pH 9.0)).



IP result of anti-PLDN (IP:10891-2-AP, 3ug; Detection:10891-2-AP 1:500) with K-562 cells lysate 3600ug.



WB result of PLDN antibody (10891-2-AP; 1:2000; incubated at room temperature for 1.5 hours) with sh-Control and sh-PLDN transfected A431 cells.