

For Research Use Only

# CSRP2 Polyclonal antibody

Catalog Number: 10892-2-AP

Featured Product

4 Publications



## Basic Information

**Catalog Number:**

10892-2-AP

**Size:**

150ul, Concentration: 800 µg/ml by Nanodrop;

**Source:**

Rabbit

**Isotype:**

IgG

**Immunogen Catalog Number:**

AG1338

**GenBank Accession Number:**

BC000992

**GeneID (NCBI):**

1466

**UNIPROT ID:**

Q16527

**Full Name:**

cysteine and glycine-rich protein 2

**Calculated MW:**

21 kDa

**Observed MW:**

21 kDa

**Purification Method:**

Antigen affinity purification

**Recommended Dilutions:**

WB 1:500-1:2000

IP 0.5-4.0 ug for 1.0-3.0 mg of total protein lysate

## Applications

**Tested Applications:**

WB, IP, ELISA

**Cited Applications:**

WB, IF, IHC

**Species Specificity:**

human, mouse, rat

**Cited Species:**

human, rat, mouse

**Positive Controls:**

**WB:** HepG2 cells, mouse kidney tissue, rat kidney tissue

**IP:** mouse liver tissue,

## Notable Publications

Author	Pubmed ID	Journal	Application
Xinghe Chen	36414118	Toxicol Appl Pharmacol	WB,IF
Esther Imperlini	29142197	Sci Rep	WB
Huiyuan Wang	38081793	Cell Biochem Funct	WB

## Storage

**Storage:**

Store at -20°C. Stable for one year after shipment.

**Storage Buffer:**

PBS with 0.02% sodium azide and 50% glycerol pH 7.3.

Aliquoting is unnecessary for -20°C storage

\*\*\* 20ul sizes contain 0.1% BSA

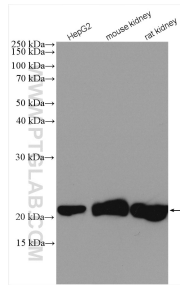
For technical support and original validation data for this product please contact:

T: 1 (888) 4PTGLAB (1-888-478-4522) (toll free in USA), or 1(312) 455-8498 (outside USA)

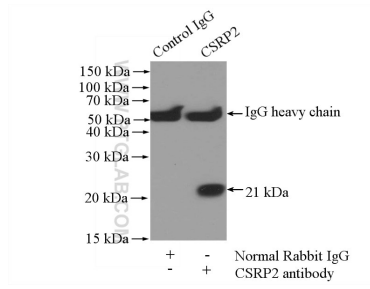
E: proteintech@ptglab.com  
W: ptglab.com

This product is exclusively available under Proteintech Group brand and is not available to purchase from any other manufacturer.

## Selected Validation Data



Various lysates were subjected to SDS PAGE followed by western blot with 10892-2-AP (CSRP2 antibody) at dilution of 1:1000 incubated at room temperature for 1.5 hours.



IP result of anti-CSRP2 (IP:10892-2-AP, 4ug; Detection:10892-2-AP 1:1000) with mouse liver tissue lysate 4000ug.