

For Research Use Only

Cyclin D2 Polyclonal antibody

Catalog Number: 10934-1-AP

Featured Product

56 Publications



Basic Information

Catalog Number:

10934-1-AP

Size:

150ul, Concentration: 350 ug/ml by Nanodrop and 300 ug/ml by Bradford method using BSA as the standard;

Source:

Rabbit

Isotype:

IgG

Immunogen Catalog Number:

AG1377

GenBank Accession Number:

BC010958

GeneID (NCBI):

894

UNIPROT ID:

P30279

Full Name:

cyclin D2

Calculated MW:

32 kDa

Observed MW:

34 kDa

Purification Method:

Antigen affinity purification

Recommended Dilutions:

WB: 1:500-1:2000

IHC: 1:250-1:1000

IF/ICC: 1:50-1:500

Applications

Tested Applications:

WB, IHC, ELISA

Cited Applications:

WB, IHC

Species Specificity:

human, mouse

Cited Species:

human, mouse, rat, pig, bovine, goat

Note-IHC: suggested antigen retrieval with TE buffer pH 9.0; (*) Alternatively, antigen retrieval may be performed with citrate buffer pH 6.0

Positive Controls:

WB: Caco-2 cells, MCF-7 cells, NIH/3T3 cells, U2OS cells, HEK-293 cells

IHC: human renal cell carcinoma tissue, human gliomas tissue

IF/ICC: U2OS cells,

Background Information

CCND2 belongs to the highly conserved cyclin family, whose members are characterized by a dramatic periodicity in protein abundance through the cell cycle. Cyclins function as regulators of CDK kinases. CCND2 forms a complex with and functions as a regulatory subunit of CDK4 or CDK6, whose activity is required for cell cycle G1/S transition. CCND2 has been shown to interact with and be involved in the phosphorylation of tumor suppressor protein Rb. High level expression of CCND2 was observed in ovarian and testicular tumors.

Notable Publications

Author	Pubmed ID	Journal	Application
Naoki Morito	28964572	Kidney Int	
Han Xiao	31572009	Cancer Manag Res	WB
Jia-Jie Lin	34557530	Front Cardiovasc Med	WB

Storage

Storage:

Store at -20°C. Stable for one year after shipment.

Storage Buffer:

PBS with 0.02% sodium azide and 50% glycerol, pH7.3

Aliquoting is unnecessary for -20°C storage

*** 20ul sizes contain 0.1% BSA

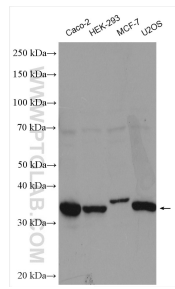
For technical support and original validation data for this product please contact:

T: 1 (888) 4PTGLAB (1-888-478-4522) (toll free in USA), or 1(312) 455-8498 (outside USA)

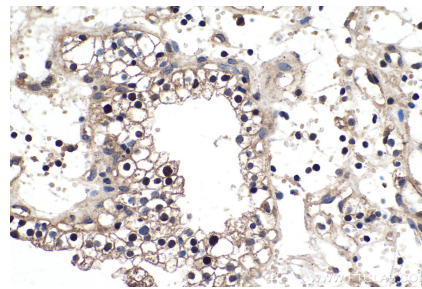
E: proteintech@ptglab.com
W: ptglab.com

This product is exclusively available under Proteintech Group brand and is not available to purchase from any other manufacturer.

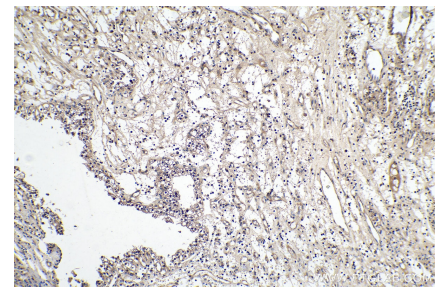
Selected Validation Data



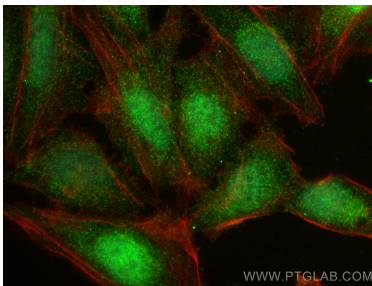
Various lysates were subjected to SDS PAGE followed by western blot with 10934-1-AP (Cyclin D2 antibody) at dilution of 1:1000 incubated at room temperature for 1.5 hours.



Immunohistochemical analysis of paraffin-embedded human renal cell carcinoma tissue slide using 10934-1-AP (Cyclin D2 antibody) at dilution of 1:500 (under 40x lens). Heat mediated antigen retrieval with Tris-EDTA buffer (pH 9.0).



Immunohistochemical analysis of paraffin-embedded human renal cell carcinoma tissue slide using 10934-1-AP (Cyclin D2 antibody) at dilution of 1:500 (under 10x lens). Heat mediated antigen retrieval with Tris-EDTA buffer (pH 9.0).



Immunofluorescent analysis of (4% PFA) fixed U2OS cells using Cyclin D2 antibody (10934-1-AP) at dilution of 1:200 and CoraLite®488-Conjugated Goat Anti-Rabbit IgG(H+L) (SA00013-2), CoraLite®488-Conjugated Goat Anti-Mouse IgG(H+L) (SA00013-1) (red).