

For Research Use Only

CTDSP1 Polyclonal antibody

Catalog Number:10952-1-AP

Featured Product

4 Publications



Basic Information

Catalog Number:

10952-1-AP

Size:

150ul , Concentration: 550 ug/ml by Nanodrop and 300 ug/ml by Bradford method using BSA as the standard;

Source:

Rabbit

Isotype:

IgG

Immunogen Catalog Number:

AG1410

GenBank Accession Number:

BC012977

GeneID (NCBI):

58190

UNIPROT ID:

Q9GZU7

Full Name:

CTD (carboxy-terminal domain, RNA polymerase II, polypeptide A) small phosphatase 1

Calculated MW:

29 kDa

Observed MW:

29-33 kDa

Purification Method:

Antigen affinity purification

Recommended Dilutions:

WB 1:500-1:2000

Applications

Tested Applications:

WB, ELISA

Cited Applications:

WB

Species Specificity:

human, mouse

Cited Species:

human, mouse

Positive Controls:

WB : HepG2 cells, mouse kidney tissue, mouse liver tissue

Background Information

CTDSP1 also named as NIF3, NLIF, or SCP1, is a 261 amino acid protein, which contains one FCP1 homology domain. CTDSP1 localizes in the nucleus and colocalizes with RNA polymerase II. CTDSP1 is expressed in non-neuronal tissues. It is highly expressed in skeletal muscle, spleen, lung and placenta. CTDSP1 preferentially catalyzes the dephosphorylation of 'Ser-5' within the tandem 7 residues repeats in the C-terminal domain (CTD) of the largest RNA polymerase II subunit POLR2.

Notable Publications

Author	Pubmed ID	Journal	Application
Nathaniel Tate Burkholder	30217818	J Biol Chem	WB
Chunming Zhao	36311195	Iran J Basic Med Sci	WB
Jie Du	31907356	Cell Death Dis	WB

Storage

Storage:

Store at -20°C. Stable for one year after shipment.

Storage Buffer:

PBS with 0.02% sodium azide and 50% glycerol pH 7.3.

Aliquoting is unnecessary for -20°C storage

*** 20ul sizes contain 0.1% BSA

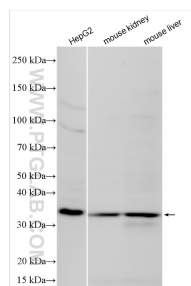
For technical support and original validation data for this product please contact:

T: 1 (888) 4PTGLAB (1-888-478-4522) (toll free in USA), or 1(312) 455-8498 (outside USA)

E: proteintech@ptglab.com
W: ptglab.com

This product is exclusively available under Proteintech Group brand and is not available to purchase from any other manufacturer.

Selected Validation Data



Various lysates were subjected to SDS PAGE followed by western blot with 10952-1-AP (CTDSP1 antibody) at dilution of 1:1000 incubated at room temperature for 1.5 hours.