

For Research Use Only

FceR1a Polyclonal antibody

Catalog Number: 10980-1-AP

7 Publications



Basic Information

Catalog Number:

10980-1-AP

Size:

150ul, Concentration: 350 ug/ml by Nanodrop;

Source:

Rabbit

Isotype:

IgG

Immunogen Catalog Number:

AG1398

GenBank Accession Number:

BC015195

GeneID (NCBI):

2205

UNIPROT ID:

P12319

Full Name:

Fc fragment of IgE, high affinity I, receptor for; alpha polypeptide

Calculated MW:

30 kDa

Observed MW:

55-70 kDa

Purification Method:

Antigen affinity purification

Recommended Dilutions:

WB 1:1000-1:4000

Applications

Tested Applications:

WB, ELISA

Cited Applications:

WB, IHC, IF

Species Specificity:

human, mouse, rat

Cited Species:

human, mouse

Positive Controls:

WB : MC/9 cells, human spleen tissue, RAW 264.7 cells, mouse spleen tissue, rat spleen tissue

Background Information

Fc epsilon Receptor I alpha (FceR1a) is a single-pass type I membrane protein that contains 2 immunoglobulin-like domains. FceR1a forms a tetrameric complex, FceRI, with one beta and two gamma subunits (PMID: 19406478). FceRI is the high-affinity receptor for the Fc region of immunoglobulin E (IgE) (PMID: 1532373). It is expressed on mast cells and basophils and plays a central role in the allergic response (PMID: 2148316). The calculated molecular weight of FceR1a is 30 kDa, the 55- to 70-kDa bands detected by this antibody are probably caused by heterogeneous glycosylation (PMID: 11344350; 12671054).

Notable Publications

Author	Pubmed ID	Journal	Application
Yunsheng Liang	31251950	J Allergy Clin Immunol	WB
Hongmei Zhao	34158869	Theranostics	WB
Chi Geng	35108660	Transl Res	WB

Storage

Storage:

Store at -20°C. Stable for one year after shipment.

Storage Buffer:

PBS with 0.02% sodium azide and 50% glycerol, pH7.3

Aliquoting is unnecessary for -20°C storage

*** 20ul sizes contain 0.1% BSA

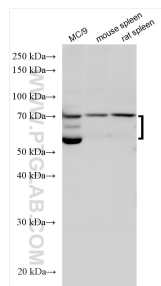
For technical support and original validation data for this product please contact:

T: 1 (888) 4PTGLAB (1-888-478-4522) (toll free in USA), or 1(312) 455-8498 (outside USA)

E: proteintech@ptglab.com
W: ptglab.com

This product is exclusively available under Proteintech Group brand and is not available to purchase from any other manufacturer.

Selected Validation Data



Various lysates were subjected to SDS PAGE followed by western blot with 10980-1-AP (Fc Epsilon RI Alpha antibody) at dilution of 1:2000 incubated at room temperature for 1.5 hours.