

For Research Use Only

# VILIP3 Polyclonal antibody

Catalog Number: 10989-1-AP

Featured Product

6 Publications



## Basic Information

### Catalog Number:

10989-1-AP

### Size:

150ul, Concentration: 650 ug/ml by Nanodrop;

### Source:

Rabbit

### Isotype:

IgG

### Immunogen Catalog Number:

AG1449

### GenBank Accession Number:

BC009846

### GeneID (NCBI):

3241

### UNIPROT ID:

P37235

### Full Name:

hippocalcin-like 1

### Calculated MW:

22 kDa

### Observed MW:

22 kDa

### Purification Method:

Antigen affinity purification

### Recommended Dilutions:

WB 1:5000-1:50000

IP 0.5-4.0 ug for 1.0-3.0 mg of total protein lysate

IHC 1:50-1:500

IF/ICC 1:200-1:800

## Applications

### Tested Applications:

WB, IHC, IF/ICC, IP, ELISA

### Cited Applications:

WB, IHC, IF

### Species Specificity:

human, mouse, rat

### Cited Species:

human, mouse

**Note-IHC: suggested antigen retrieval with TE buffer pH 9.0; (\*) Alternatively, antigen retrieval may be performed with citrate buffer pH 6.0**

### Positive Controls:

**WB**: SH-SY5Y cells, HeLa cells, mouse brain tissue, rat brain tissue, human brain tissue

**IP**: mouse brain tissue,

**IHC**: human kidney tissue, mouse cerebellum tissue

**IF/ICC**: HeLa cells,

## Background Information

VILIP3, is a member of neuron-specific calcium-binding proteins family found in the retina and brain. It is highly similar to human hippocalcin protein and nearly identical to the rat and mouse hippocalcin like-1 proteins. It may be involved in the calcium-dependent regulation of rhodopsin phosphorylation and may be of relevance for neuronal signalling in the central nervous system.

## Notable Publications

Author	Pubmed ID	Journal	Application
Tao Chen	36438486	Theranostics	WB
Mingjian Ma	35645147	Cancer Med	WB, IHC
I-Ling Lu	29950674	Nat Commun	IF

## Storage

### Storage:

Store at -20°C. Stable for one year after shipment.

### Storage Buffer:

PBS with 0.02% sodium azide and 50% glycerol pH 7.3.

Aliquoting is unnecessary for -20°C storage

\*\*\* 20ul sizes contain 0.1% BSA

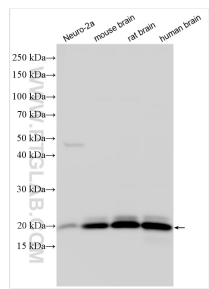
For technical support and original validation data for this product please contact:

T: 1 (888) 4PTGLAB (1-888-478-4522) (toll free in USA), or 1(312) 455-8498 (outside USA)

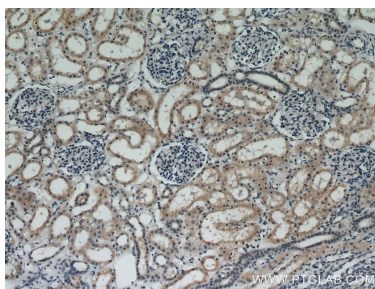
E: [proteintech@ptglab.com](mailto:proteintech@ptglab.com)  
W: [ptglab.com](http://ptglab.com)

This product is exclusively available under Proteintech Group brand and is not available to purchase from any other manufacturer.

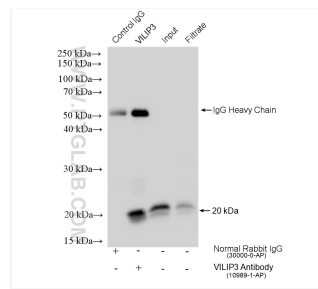
Selected Validation Data



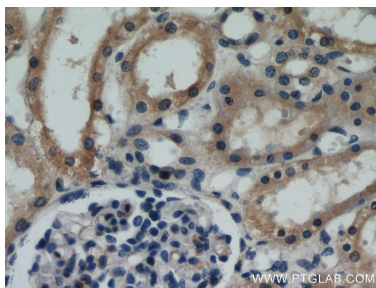
Various lysates were subjected to SDS PAGE followed by western blot with 10989-1-AP (VILIP3 antibody) at dilution of 1:10000 incubated at room temperature for 1.5 hours.



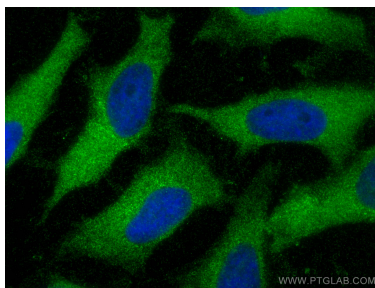
Immunohistochemical analysis of paraffin-embedded human kidney using 10989-1-AP (VILIP3 antibody) at dilution of 1:50 (under 10x lens).



IP result of anti-VILIP3 (IP:10989-1-AP, 4ug; Detection:10989-1-AP 1:10000) with mouse brain tissue lysate 1280 ug.



Immunohistochemical analysis of paraffin-embedded human kidney using 10989-1-AP (VILIP3 antibody) at dilution of 1:50 (under 40x lens).



Immunofluorescent analysis of (-20°C Methanol) fixed HeLa cells using VILIP3 antibody (10989-1-AP) at dilution of 1:400 and Coralite@488-Conjugated Goat Anti-Rabbit IgG(H+L).