

For Research Use Only

# Cytochrome c Polyclonal antibody

Catalog Number: 10993-1-AP

Featured Product

571 Publications



## Basic Information

### Catalog Number:

10993-1-AP

### Size:

150ul, Concentration: 670 ug/ml by Nanodrop;

### Source:

Rabbit

### Isotype:

IgG

### Immunogen Catalog Number:

AG1455

### GenBank Accession Number:

BC009578

### GeneID (NCBI):

54205

### UNIPROT ID:

P99999

### Full Name:

cytochrome c, somatic

### Calculated MW:

12 kDa

### Observed MW:

12-15 kDa

### Purification Method:

Antigen affinity purification

### Recommended Dilutions:

WB 1:1000-1:8000

IHC 1:500-1:2000

IF-P 1:50-1:500

## Applications

### Tested Applications:

WB, IHC, IF-P, FC (Intra), ELISA

### Cited Applications:

WB, IHC, IF

### Species Specificity:

human, mouse, rat

### Cited Species:

human, mouse, rat, pig, monkey, chicken, hamster, sheep, goat, hippospongia

**Note-IHC: suggested antigen retrieval with TE buffer pH 9.0; (\*) Alternatively, antigen retrieval may be performed with citrate buffer pH 6.0**

### Positive Controls:

**WB**: HeLa cells, mouse skeletal muscle tissue, rat skeletal muscle tissue, NIH/3T3 cells, rat liver tissue, HEK-293 cells, HepG2 cells, C2C12 cells, Jurkat cells, mouse kidney tissue, rat kidney tissue

**IHC**: human liver tissue, human breast cancer tissue, human colon cancer tissue, mouse brain tissue

**IF-P**: mouse eye tissue,

## Background Information

Cytochrome c is a 12-15 kDa electron transporting protein located in the inner mitochondrial membrane. As a part of respiratory chain, cytochrome c plays a critical role in the process of oxidative phosphorylation and ATP producing. Besides, cytochrome c also gets implicated in apoptosis process. Upon apoptotic stimulation, cytochrome c can be released from mitochondria into cytoplasm, which is required for caspase-3 activation and the occurrence of apoptosis.

## Notable Publications

Author	Pubmed ID	Journal	Application
Qingxi Zhang	33117129	Front Mol Neurosci	WB
Yiqun Ji	33152945	Biomed Pharmacother	WB
Hui Wang	36243659	Hepatobiliary Pancreat Dis Int	WB

## Storage

### Storage:

Store at -20°C. Stable for one year after shipment.

### Storage Buffer:

PBS with 0.02% sodium azide and 50% glycerol pH 7.3.

Aliquoting is unnecessary for -20°C storage

\*\*\* 20ul sizes contain 0.1% BSA

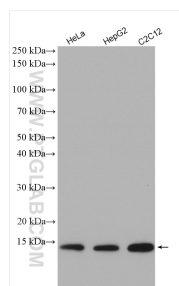
For technical support and original validation data for this product please contact:

T: 1 (888) 4PTGLAB (1-888-478-4522) (toll free in USA), or 1(312) 455-8498 (outside USA)

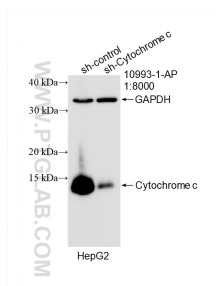
E: proteintech@ptglab.com  
W: ptglab.com

This product is exclusively available under Proteintech Group brand and is not available to purchase from any other manufacturer.

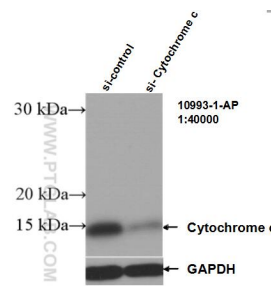
## Selected Validation Data



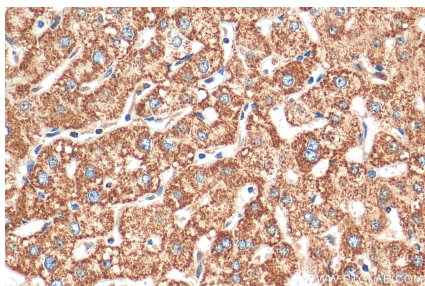
Various lysates were subjected to SDS PAGE followed by western blot with 10993-1-AP (Cytochrome c antibody) at dilution of 1:4000 incubated at room temperature for 1.5 hours.



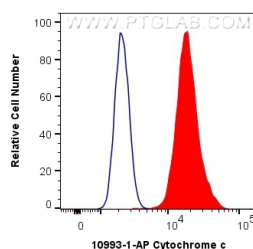
WB result of Cytochrome c antibody (10993-1-AP; 1:8000; incubated at room temperature for 1.5 hours) with sh-Control and sh-Cytochrome c transfected HepG2 cells.



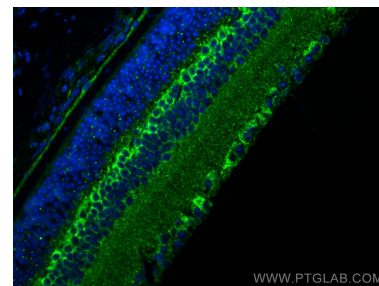
WB result of Cytochrome c antibody (10993-1-AP; 1:40000; incubated at room temperature for 1.5 hours) with sh-Control and sh-Cytochrome c transfected HEK-293 cells.



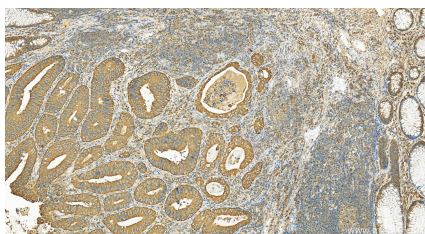
Immunohistochemical analysis of paraffin-embedded human liver tissue slide using 10993-1-AP (Cytochrome c antibody) at dilution of 1:1000 (under 40x lens). Heat mediated antigen retrieval with Tris-EDTA buffer (pH 9.0).



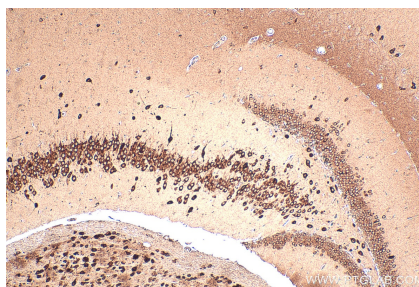
1X10<sup>6</sup> HepG2 cells were intracellularly stained with 0.4 ug Anti-Human Cytochrome c (10993-1-AP) and CoraLite®488-Conjugated AffiniPure Goat Anti-Rabbit IgG(H+L) at dilution 1:1000 (red), or 0.4 ug Isotype Control. Cells were fixed with 4% PFA and permeabilized with Flow Cytometry Perm Buffer (PF00011-C).



Immunofluorescent analysis of (4% PFA) fixed paraffin-embedded mouse eye tissue using Cytochrome c antibody (10993-1-AP) at dilution of 1:200 and CoraLite®488-Conjugated AffiniPure Goat Anti-Rabbit IgG(H+L) (SA00013-2). Heat mediated antigen retrieval with Tris-EDTA buffer (pH 9.0).



Immunohistochemical analysis of paraffin-embedded human colon cancer tissue slide using 10993-1-AP (Cytochrome c antibody) at dilution of 1:3000 (under 20x lens). Heat mediated antigen retrieval with Tris-EDTA buffer (pH 9.0).



Immunohistochemical analysis of paraffin-embedded mouse brain tissue slide using 10993-1-AP (Cytochrome c antibody) at dilution of 1:1000 (under 10x lens). Heat mediated antigen retrieval with Tris-EDTA buffer (pH 9.0).