

For Research Use Only

SPATA2 Polyclonal antibody

Catalog Number: 11000-1-AP **1 Publications**



Basic Information

Catalog Number: 11000-1-AP	GenBank Accession Number: BC009481	Purification Method: Antigen affinity purification
Size: 150ul , Concentration: 747 µg/ml by Bradford method using BSA as the standard;	GeneID (NCBI): 9825	Recommended Dilutions: WB 1:500-1:1000 IHC 1:20-1:200
Source: Rabbit	Full Name: spermatogenesis associated 2	
Isotype: IgG	Calculated MW: 58 kDa	
Immunogen Catalog Number: AG1432	Observed MW: 60 kDa	

Applications

Tested Applications: IHC, WB, ELISA	Positive Controls:
Cited Applications: WB	WB : human lung tissue,
Species Specificity: human, mouse, rat	IHC : human prostate cancer tissue, mouse lung tissue
Cited Species: human	
Note-IHC: suggested antigen retrieval with TE buffer pH 9.0; (*) Alternatively, antigen retrieval may be performed with citrate buffer pH 6.0	

Background Information

Notable Publications

Author	Pubmed ID	Journal	Application
Senlin Qin	36787291	PLoS Genet	WB

Storage

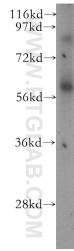
Storage:
Store at -20°C. Stable for one year after shipment.
Storage Buffer:
PBS with 0.02% sodium azide and 50% glycerol pH 7.3.
Aliquoting is unnecessary for -20°C storage

*** 20ul sizes contain 0.1% BSA

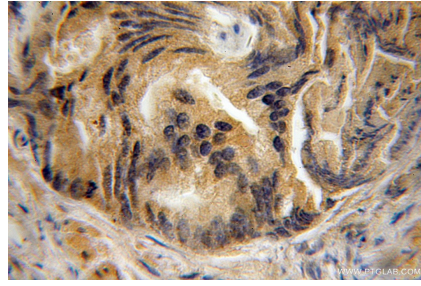
For technical support and original validation data for this product please contact:
T: 1 (888) 4PTGLAB (1-888-478-4522) (toll free in USA), or 1(312) 455-8498 (outside USA)
E: proteintech@ptglab.com
W: ptglab.com

This product is exclusively available under Proteintech Group brand and is not available to purchase from any other manufacturer.

Selected Validation Data



human lung tissue were subjected to SDS PAGE followed by western blot with 11000-1-AP (SPATA2 antibody) at dilution of 1:800 incubated at room temperature for 1.5 hours.



Immunohistochemical analysis of paraffin-embedded human prostate cancer using 11000-1-AP (SPATA2 antibody) at dilution of 1:100 (under 10x lens).