

For Research Use Only

WBS15/LAT2 Polyclonal antibody

Catalog Number: 11008-1-AP



Basic Information

Catalog Number: 11008-1-AP	GenBank Accession Number: BC009204	Purification Method: Antigen affinity purification
Size: 150ul , Concentration: 750 µg/ml by Nanodrop and 333 µg/ml by Bradford method using BSA as the standard;	GeneID (NCBI): 7462	Recommended Dilutions: WB 1:1000-1:4000
Source: Rabbit	Full Name: linker for activation of T cells family, member 2	
Isotype: IgG	Calculated MW: 27 kDa	
Immunogen Catalog Number: AG1454	Observed MW: 27-30 kDa	

Applications

Tested Applications:
WB, ELISA

Species Specificity:
human, mouse

Positive Controls:

WB: Raji cells, human placenta tissue, human brain tissue

Background Information

WBS15, also named as LAB, NTAL, WBS15, WBS15 and LAT2 (Linker for activation of T-cells family member 2; not SLC7A8/LAT2), is involved in FCER1 (high affinity immunoglobulin epsilon receptor)-mediated signaling in mast and myeloid cells. WBS15 is involved in BCR (B-cell antigen receptor)-mediated signaling in B-cells. It is located in the Williams-Beuren syndrome (WBS) critical region. WBS15 has two isoform with MW 27-30 kDa and 12 kDa.

Storage

Storage:
Store at -20°C. Stable for one year after shipment.

Storage Buffer:
PBS with 0.02% sodium azide and 50% glycerol pH 7.3.

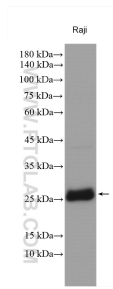
Aliquoting is unnecessary for -20°C storage

*** 20ul sizes contain 0.1% BSA

For technical support and original validation data for this product please contact:
T: 1 (888) 4PTGLAB (1-888-478-4522) (toll free in USA), or 1(312) 455-8498 (outside USA)
E: proteintech@ptglab.com
W: ptglab.com

This product is exclusively available under Proteintech Group brand and is not available to purchase from any other manufacturer.

Selected Validation Data



Raji lysates were subjected to SDS PAGE followed by western blot with 11008-1-AP (WBS15/LAT2 antibody) at dilution of 1:2000 incubated at room temperature for 1.5 hours.