

For Research Use Only

# WBP1 Polyclonal antibody

Catalog Number: 11042-1-AP

Featured Product

1 Publications



## Basic Information

### Catalog Number:

11042-1-AP

### Size:

150ul, Concentration: 800 ug/ml by Nanodrop and 433 ug/ml by Bradford method using BSA as the standard;

### Source:

Rabbit

### Isotype:

IgG

### Immunogen Catalog Number:

AG1478

### GenBank Accession Number:

BC010012

### GeneID (NCBI):

23559

### UNIPROT ID:

Q96G27

### Full Name:

WW domain binding protein 1

### Calculated MW:

32 kDa

### Observed MW:

32 kDa

### Purification Method:

Antigen affinity purification

### Recommended Dilutions:

WB 1:500-1:3000

IHC 1:50-1:500

## Applications

### Tested Applications:

WB, IHC, ELISA

### Cited Applications:

WB

### Species Specificity:

human, mouse

### Cited Species:

mouse

**Note-IHC: suggested antigen retrieval with TE buffer pH 9.0; (\*) Alternatively, antigen retrieval may be performed with citrate buffer pH 6.0**

### Positive Controls:

WB : mouse brain tissue,

IHC : human pancreas cancer tissue,

## Background Information

WBP1 was originally identified in vitro as a protein that bound to the WW domain of Yes kinase-associated protein. The silencing of WBP1 with small hairpin RNAs caused partial, but significant suppression of ATF6-induced apoptosis. It is a type I transmembrane protein.

## Notable Publications

Author	Pubmed ID	Journal	Application
Morishima Nobuhiro N	21841196	J Biol Chem	WB

## Storage

### Storage:

Store at -20°C. Stable for one year after shipment.

### Storage Buffer:

PBS with 0.02% sodium azide and 50% glycerol pH 7.3.

Aliquoting is unnecessary for -20°C storage

\*\*\* 20ul sizes contain 0.1% BSA

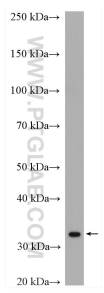
For technical support and original validation data for this product please contact:

T: 1 (888) 4PTGLAB (1-888-478-4522) (toll free in USA), or 1(312) 455-8498 (outside USA)

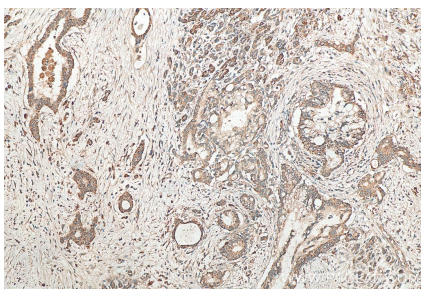
E: [proteintech@ptglab.com](mailto:proteintech@ptglab.com)  
W: [ptglab.com](http://ptglab.com)

This product is exclusively available under Proteintech Group brand and is not available to purchase from any other manufacturer.

## Selected Validation Data



mouse brain tissue were subjected to SDS PAGE followed by western blot with 11042-1-AP (WBP1 antibody) at dilution of 1:1500 incubated at room temperature for 1.5 hours.



Immunohistochemical analysis of paraffin-embedded human pancreas cancer tissue slide using 11042-1-AP (WBP1 antibody) at dilution of 1:200 (under 10x lens). Heat mediated antigen retrieval with Tris-EDTA buffer (pH 9.0).