

For Research Use Only

KRT33B Polyclonal antibody

Catalog Number: 11048-1-AP **1 Publications**



Basic Information

Catalog Number: 11048-1-AP	GenBank Accession Number: BC009971	Purification Method: Antigen affinity purification
Size: 150ul , Concentration: 600 µg/ml by Nanodrop and 300 µg/ml by Bradford method using BSA as the standard;	GeneID (NCBI): 3884	Recommended Dilutions: WB 1:500-1:2000 IHC 1:400-1:1600 IF 1:50-1:500
Source: Rabbit	Full Name: keratin 33B	
Isotype: IgG	Calculated MW: 46 kDa	
Immunogen Catalog Number: AG1522	Observed MW: 46 kDa	

Applications

Tested Applications: IF, IHC, WB, ELISA	Positive Controls: WB : MCF-7 cells, human brain tissue
Cited Applications: WB	IHC : human skin cancer tissue, human prostate cancer tissue
Species Specificity: human	IF : MCF-7 cells,
Cited Species: human	

Note-IHC: suggested antigen retrieval with TE buffer pH 9.0; (*) Alternatively, antigen retrieval may be performed with citrate buffer pH 6.0

Background Information

Keratins are a large family of proteins that form the intermediate filament cytoskeleton of epithelial cells, which are classified into two major sequence types. Type I keratins are a group of acidic intermediate filament proteins, including K9-K23, and the hair keratins Ha1-Ha8. Type II keratins are the basic or neutral counterparts to the acidic type I keratins, including K1-K8, and the hair keratins, Hb1-Hb6. Keratin 33 belongs to type I keratin and is found in hair and nails. There are two isoforms of this protein, encoded by two separate genes, KRTHA3A and KRTHA3B.

Notable Publications

Author	Pubmed ID	Journal	Application
Yan-Min Ma	24994782	Asian J Androl	WB

Storage

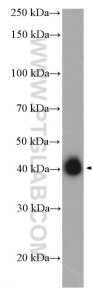
Storage:
Store at -20°C. Stable for one year after shipment.
Storage Buffer:
PBS with 0.02% sodium azide and 50% glycerol pH 7.3.
Aliquoting is unnecessary for -20°C storage

*** 20ul sizes contain 0.1% BSA

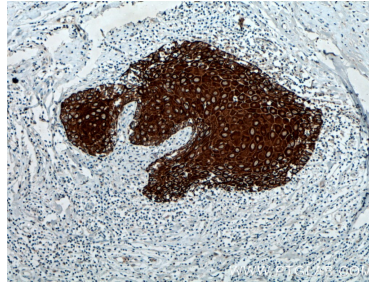
For technical support and original validation data for this product please contact:
T: 1 (888) 4PTGLAB (1-888-478-4522) (toll free in USA), or 1(312) 455-8498 (outside USA)
E: proteintech@ptglab.com
W: ptglab.com

This product is exclusively available under Proteintech Group brand and is not available to purchase from any other manufacturer.

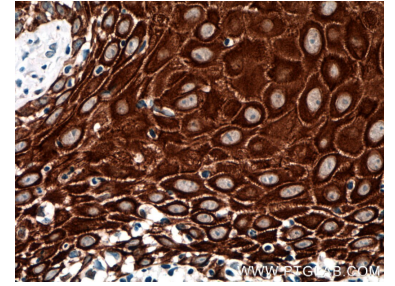
Selected Validation Data



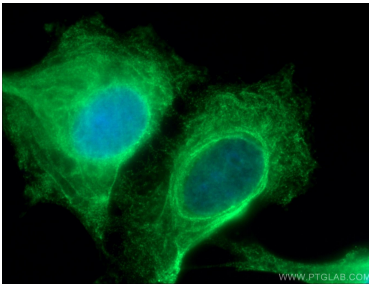
MCF-7 cells were subjected to SDS PAGE followed by western blot with 11048-1-AP (KRT33B antibody) at dilution of 1:1000 incubated at room temperature for 1.5 hours.



Immunohistochemical analysis of paraffin-embedded human skin cancer tissue slide using 11048-1-AP (KRT33B antibody) at dilution of 1:800 (under 10x lens. Heat mediated antigen retrieval with Tris-EDTA buffer (pH 9.0).



Immunohistochemical analysis of paraffin-embedded human skin cancer tissue slide using 11048-1-AP (KRT33B antibody) at dilution of 1:800 (under 40x lens. Heat mediated antigen retrieval with Tris-EDTA buffer (pH 9.0).



Immunofluorescent analysis of (-20°C Ethanol) fixed MCF-7 cells using 11048-1-AP (KRT33B antibody) at dilution of 1:50 and Alexa Fluor 488-conjugated AffiniPure Goat Anti-Rabbit IgG(H+L).