

For Research Use Only

# Cirhin Polyclonal antibody

Catalog Number: 11057-1-AP



## Basic Information

### Catalog Number:

11057-1-AP

### Size:

150ul, Concentration: 500 ug/ml by Nanodrop and 300 ug/ml by Bradford method using BSA as the standard;

### Source:

Rabbit

### Isotype:

IgG

### Immunogen Catalog Number:

AG1494

### GenBank Accession Number:

BC009348

### GeneID (NCBI):

84916

### UNIPROT ID:

Q969X6

### Full Name:

cirrhosis, autosomal recessive 1A (cirhin)

### Calculated MW:

77 kDa

### Observed MW:

70-77 kDa

### Purification Method:

Antigen affinity purification

### Recommended Dilutions:

WB 1:500-1:2000

IP 0.5-4.0 ug for 1.0-3.0 mg of total protein lysate

IHC 1:50-1:500

## Applications

### Tested Applications:

WB, IP, IHC, ELISA

### Species Specificity:

human, mouse, rat

**Note-IHC: suggested antigen retrieval with TE buffer pH 9.0; (\*) Alternatively, antigen retrieval may be performed with citrate buffer pH 6.0**

### Positive Controls:

WB: Neuro-2a cells,

IP: HepG2 cells,

IHC: mouse brain tissue,

## Background Information

Cirhin is a protein that in humans is encoded by the CIRH1A gene. Mutation of this gene has been associated with North American Indian childhood cirrhosis, a severe intrahepatic cholestasis that results in transient neonatal jaundice, and progresses to periportal fibrosis and cirrhosis in childhood and adolescence (PMID: 12417987). Catalog#11057-1-AP is a rabbit polyclonal antibody raised against the full-length of human CIRHIN.

## Storage

### Storage:

Store at -20°C. Stable for one year after shipment.

### Storage Buffer:

PBS with 0.02% sodium azide and 50% glycerol pH 7.3.

Aliquoting is unnecessary for -20°C storage

\*\*\* 20ul sizes contain 0.1% BSA

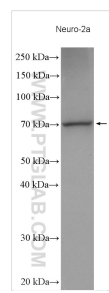
For technical support and original validation data for this product please contact:

T: 1 (888) 4PTGLAB (1-888-478-4522) (toll free in USA), or 1(312) 455-8498 (outside USA)

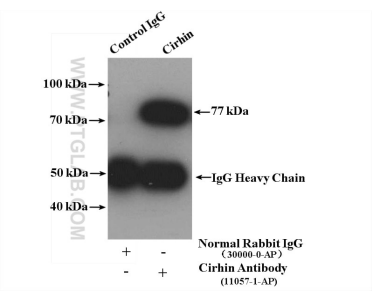
E: [proteintech@ptglab.com](mailto:proteintech@ptglab.com)  
W: [ptglab.com](http://ptglab.com)

This product is exclusively available under Proteintech Group brand and is not available to purchase from any other manufacturer.

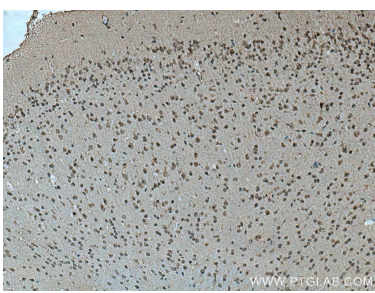
Selected Validation Data



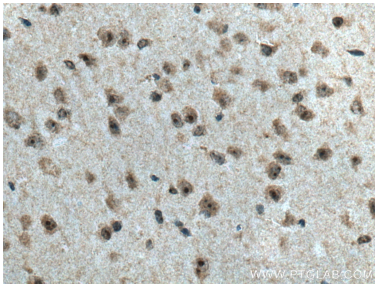
Neuro-2a cells were subjected to SDS PAGE followed by western blot with 11057-1-AP (Cirhin antibody) at dilution of 1:1000 incubated at room temperature for 1.5 hours.



IP result of anti-Cirhin (IP:11057-1-AP, 4ug; Detection:11057-1-AP 1:700) with HepG2 cells lysate 2600 ug.



Immunohistochemical analysis of paraffin-embedded mouse brain tissue slide using 11057-1-AP (Cirhin antibody) at dilution of 1:200 (under 10x lens). Heat mediated antigen retrieval with Tris-EDTA buffer (pH 9.0).



Immunohistochemical analysis of paraffin-embedded mouse brain tissue slide using 11057-1-AP (Cirhin antibody) at dilution of 1:200 (under 40x lens). Heat mediated antigen retrieval with Tris-EDTA buffer (pH 9.0).