

For Research Use Only

Annexin V Polyclonal antibody

Catalog Number: 11060-1-AP

Featured Product

32 Publications



Basic Information

Catalog Number:

11060-1-AP

Size:

150ul, Concentration: 500 ug/ml by Nanodrop;

Source:

Rabbit

Isotype:

IgG

Immunogen Catalog Number:

AG1538

GenBank Accession Number:

BC018671

GeneID (NCBI):

308

UNIPROT ID:

P08758

Full Name:

annexin A5

Calculated MW:

36 kDa

Observed MW:

36 kDa

Purification Method:

Antigen affinity purification

Recommended Dilutions:

WB 1:5000-1:50000

IP 0.5-4.0 ug for 1.0-3.0 mg of total protein lysate

IHC 1:20-1:200

IF/ICC 1:50-1:500

Applications

Tested Applications:

WB, IHC, IF/ICC, FC (Intra), IP, ELISA

Cited Applications:

WB, IHC, IF

Species Specificity:

human, mouse, rat, pig

Cited Species:

human, mouse, rat

Note-IHC: suggested antigen retrieval with TE buffer pH 9.0; (*) Alternatively, antigen retrieval may be performed with citrate buffer pH 6.0

Positive Controls:

WB: HEK-293T cells, A431 cells, C6 cells, HeLa cells, HepG2 cells, human heart tissue, human lung tissue, human placenta tissue, human skeletal muscle tissue, NIH/3T3 cells, pig heart tissue, pig liver tissue, K-562 cells, NIH3T3 cells, C2C12 cells

IP: HeLa cells, mouse liver tissue

IHC: human spleen tissue, human placenta tissue

IF/ICC: HeLa cells,

Background Information

Annexin A5 (ANXA5), is a member of the structurally related family of annexin proteins some of which have been implicated in membrane-related events along exocytotic and endocytotic pathways. Annexin 5 is a phospholipase A2 and protein kinase C inhibitory protein with calcium channel activity and a potential role in cellular signal transduction, inflammation, growth and differentiation. Annexin 5 has also been described as placental anticoagulant protein I, vascular anticoagulant-alpha, endonexin II, lipocortin V, placental protein 4 and anchorin CII.

Notable Publications

| Author | Pubmed ID | Journal | Application |
|--------------------|-----------|-------------------------|-------------|
| Guangcong Peng | 34562473 | Brain Res | IF |
| Folnetti A Alvarez | 36114323 | Breast Cancer Res Treat | WB |
| Mansheng Li | 34901026 | Front Cell Dev Biol | IHC |

Storage

Storage:

Store at -20°C. Stable for one year after shipment.

Storage Buffer:

PBS with 0.02% sodium azide and 50% glycerol pH 7.3.

Aliquoting is unnecessary for -20°C storage

*** 20ul sizes contain 0.1% BSA

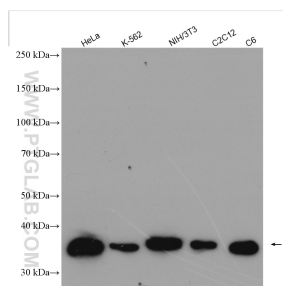
For technical support and original validation data for this product please contact:

T: 1 (888) 4PTGLAB (1-888-478-4522) (toll free in USA), or 1(312) 455-8498 (outside USA)

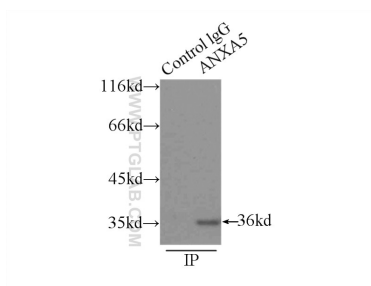
E: proteintech@ptglab.com
W: ptglab.com

This product is exclusively available under Proteintech Group brand and is not available to purchase from any other manufacturer.

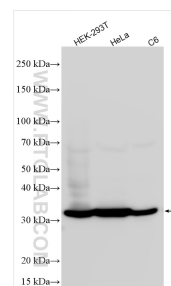
Selected Validation Data



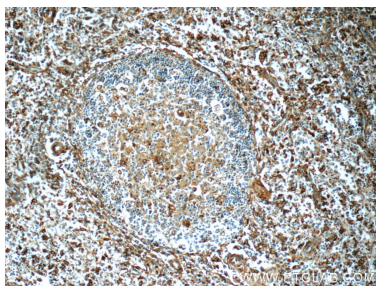
Various lysates were subjected to SDS PAGE followed by western blot with 11060-1-AP (Annexin V antibody) at dilution of 1:8000 incubated at room temperature for 1.5 hours.



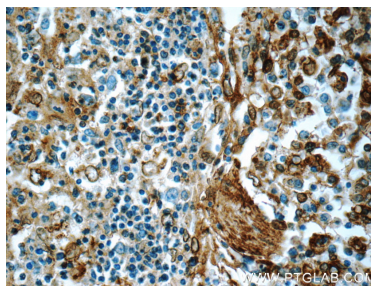
IP result of anti-Annexin V (IP: 11060-1-AP, 3ug; Detection: 11060-1-AP 1:500) with HeLa cells lysate 3000ug.



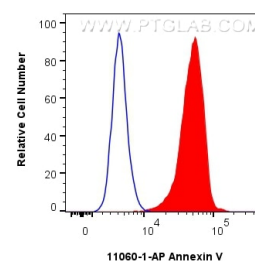
Various lysates were subjected to SDS PAGE followed by western blot with 11060-1-AP (Annexin V antibody) at dilution of 1:15000 incubated at room temperature for 1.5 hours.



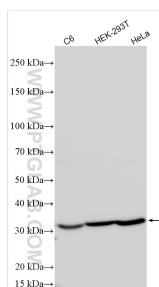
Immunohistochemical analysis of paraffin-embedded human spleen tissue slide using 11060-1-AP (Annexin V antibody at dilution of 1:400 (under 10x lens).



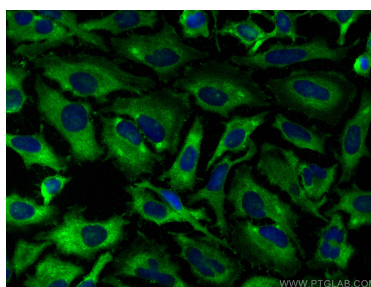
Immunohistochemical analysis of paraffin-embedded human spleen tissue slide using 11060-1-AP (Annexin V antibody at dilution of 1:400 (under 40x lens).



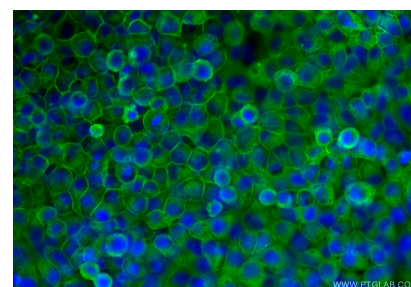
1×10^6 HeLa cells were intracellularly stained with 0.25 ug Annexin V Polyclonal antibody (11060-1-AP) and CoraLite®488-Conjugated Goat Anti-Rabbit IgG(H+L) (SA00013-2)(red), or 0.25 ug Rabbit IgG control Rabbit PolyAb (30000-O-AP) (blue). Cells were fixed with 4% PFA and permeabilized with Flow Cytometry Perm Buffer (PF00011-C).



Various lysates were subjected to SDS PAGE followed by western blot with 11060-1-AP (Annexin V antibody) at dilution of 1:25000 incubated at room temperature for 1.5 hours.



Immunofluorescent analysis of (-20°C Methanol) fixed HeLa cells using Annexin V antibody (11060-1-AP) at dilution of 1:200 and CoraLite®488-Conjugated AffiniPure Goat Anti-Rabbit IgG(H+L).



Immunofluorescent analysis of (-20°C Ethanol) fixed HeLa cells using Annexin V antibody (11060-1-AP) at dilution of 1:400 and CoraLite®488-Conjugated Goat Anti-Rabbit IgG(H+L) (SA00013-2).