

For Research Use Only

SYCE1 Polyclonal antibody

Catalog Number: 11063-1-AP **4 Publications**



Basic Information

Catalog Number: 11063-1-AP	GenBank Accession Number: BC034821	Purification Method: Antigen affinity purification
Size: 150ul, Concentration: 800 µg/ml by Nanodrop and 400 µg/ml by Bradford method using BSA as the standard;	GeneID (NCBI): 93426	Recommended Dilutions: WB 1:500-1:2000 IP 0.5-4.0 ug for IP and 1:500-1:1000 for WB
Source: Rabbit	Full Name: synaptonemal complex central element protein 1	IHC 1:20-1:200 IF 1:10-1:100
Isotype: IgG	Calculated MW: 315 aa, 36 kDa	
Immunogen Catalog Number: AG1527	Observed MW: 40-44 kDa	

Applications

Tested Applications: IF, IHC, IP, WB, ELISA	Positive Controls:
Cited Applications: IF, WB	WB: mouse testis tissue,
Species Specificity: human, mouse, rat	IP: mouse testis tissue,
Cited Species: mouse	IHC: human ovary tumor tissue,
	IF: HepG2 cells,
Note-IHC: suggested antigen retrieval with TE buffer pH 9.0; (*) Alternatively, antigen retrieval may be performed with citrate buffer pH 6.0	

Background Information

Notable Publications

Author	Pubmed ID	Journal	Application
Laura Gómez-H	27796301	Nat Commun	IF
Qi Wang	35697131	J Steroid Biochem Mol Biol	WB,IF
Suixing Fan	33508233	Am J Hum Genet	IF

Storage

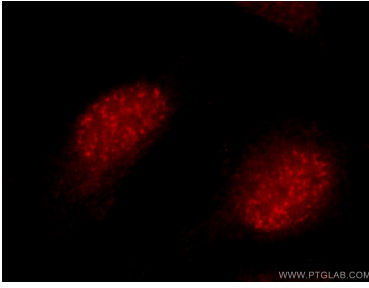
Storage:
Store at -20°C. Stable for one year after shipment.
Storage Buffer:
PBS with 0.02% sodium azide and 50% glycerol pH 7.3.
Aliquoting is unnecessary for -20°C storage

*** 20ul sizes contain 0.1% BSA

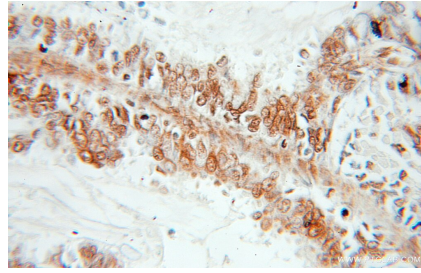
For technical support and original validation data for this product please contact:
T: 1 (888) 4PTGLAB (1-888-478-4522) (toll free in USA), or 1(312) 455-8498 (outside USA)
E: proteintech@ptglab.com
W: ptglab.com

This product is exclusively available under Proteintech Group brand and is not available to purchase from any other manufacturer.

Selected Validation Data



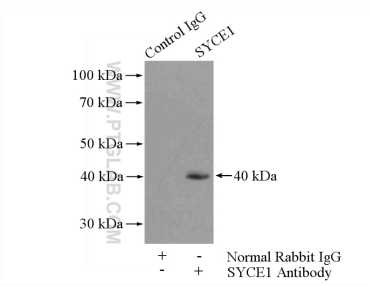
Immunofluorescent analysis of HepG2 cells using 11063-1-AP (SYCE1 antibody) at dilution of 1:25 and Rhodamine-Goat anti-Rabbit IgG.



Immunohistochemical analysis of paraffin-embedded human ovary tumor using 11063-1-AP (SYCE1 antibody) at dilution of 1:50 (under 10x lens).



mouse testis tissue were subjected to SDS PAGE followed by western blot with 11063-1-AP (SYCE1 antibody) at dilution of 1:1000 incubated at room temperature for 1.5 hours.



IP Result of anti-SYCE1 (IP:11063-1-AP, 4ug; Detection:11063-1-AP 1:800) with mouse testis tissue lysate 4800ug.