

For Research Use Only

IGFBP2 Polyclonal antibody

Catalog Number: 11065-3-AP

Featured Product

16 Publications



Basic Information

Catalog Number:

11065-3-AP

Size:

150ul, Concentration: 650 ug/ml by Nanodrop and 400 ug/ml by Bradford method using BSA as the standard;

Source:

Rabbit

Isotype:

IgG

Immunogen Catalog Number:

AG1535

GenBank Accession Number:

BC009902

GeneID (NCBI):

3485

UNIPROT ID:

P18065

Full Name:

IGF binding protein 2

Calculated MW:

35 kDa

Observed MW:

33-36 kDa

Purification Method:

Antigen affinity purification

Recommended Dilutions:

WB 1:500-1:2000

IP 0.5-4.0 ug for 1.0-3.0 mg of total protein lysate

IHC 1:50-1:500

Applications

Tested Applications:

WB, IP, IHC, ELISA

Cited Applications:

WB, IHC, IF

Species Specificity:

human, mouse

Cited Species:

human, mouse, chicken

Note-IHC: suggested antigen retrieval with TE buffer pH 9.0; (*) Alternatively, antigen retrieval may be performed with citrate buffer pH 6.0

Positive Controls:

WB : SH-SY5Y cells,

IP : SH-SY5Y cells,

IHC : human pancreas cancer tissue,

Background Information

INS-like growth factors (IGFs) and their binding proteins (IGFBPs) have important metabolic roles in the human body. IGFBP-2 is a 34 kD IGFBP protein with degraded fragments of 24 kD, 19kd and 15kd. The levels of IGFBP2 are elevated during progression of many human cancers.

Notable Publications

Author	Pubmed ID	Journal	Application
Jing Wang	34547256	Exp Cell Res	WB
Xiaochao Tan	32931483	J Clin Invest	WB
Hyunho Kim	25405894	Nat Commun	WB

Storage

Storage:

Store at -20°C. Stable for one year after shipment.

Storage Buffer:

PBS with 0.02% sodium azide and 50% glycerol pH 7.3.

Aliquoting is unnecessary for -20°C storage

*** 20ul sizes contain 0.1% BSA

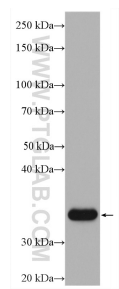
For technical support and original validation data for this product please contact:

T: 1 (888) 4PTGLAB (1-888-478-4522) (toll free in USA), or 1(312) 455-8498 (outside USA)

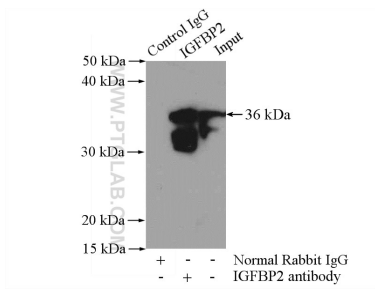
E: proteintech@ptglab.com
W: ptglab.com

This product is exclusively available under Proteintech Group brand and is not available to purchase from any other manufacturer.

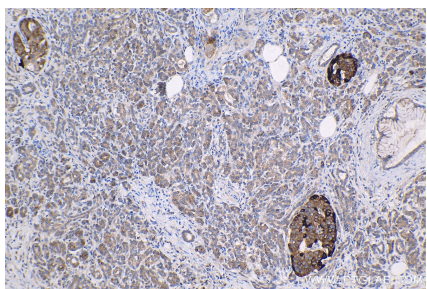
Selected Validation Data



SH-SY5Y cells were subjected to SDS PAGE followed by western blot with 11065-3-AP (IGFBP2 antibody) at dilution of 1:1000 incubated at room temperature for 1.5 hours.



IP result of anti-IGFBP2 (IP:11065-3-AP, 4ug; Detection:11065-3-AP 1:300) with SH-SY5Y cells lysate 1200ug.



Immunohistochemical analysis of paraffin-embedded human pancreas cancer tissue slide using 11065-3-AP (IGFBP2 antibody) at dilution of 1:200 (under 10x lens). Heat mediated antigen retrieval with Tris-EDTA buffer (pH 9.0).