

# PROX1

## Polyclonal ANTIBODY

Catalog Number: 11067-2-AP

Featured Product

8 Publications

### Basic Information

**Catalog Number:**  
11067-2-AP

**Size:**  
21 µg/150 µl

**Source:**  
Rabbit

**Isotype:**  
IgG

**Purification Method:**  
Antigen affinity purification

**Immunogen Catalog Number:**  
AG1543

**GenBank Accession Number:**  
BC024201

**GeneID (NCBI):**  
5629

**Full Name:**  
prospero homeobox 1

**Calculated MW:**  
737aa, 83 kDa

**Observed MW:**  
90 kDa

**Recommended Dilutions:**

WB 1:500-1:1000

IHC 1:50-1:200

IF 1:20-1:200

### Applications

**Tested Applications:**  
FC, IF, IHC, WB, ELISA

**Cited Applications:**  
CHIP, IF, IHC, WB

**Species Specificity:**  
human, mouse, rat

**Cited Species:**  
human, mouse, rat

**Positive Controls:**

WB : human liver tissue; HepG2 cells, MCF-7 cells

IHC : human lymphoma tissue;

IF : HepG2 cells;

### Background Information

PROX1, Prospero homeobox protein 1, belongs to the Prospero homeobox family and contain a Prospero-type homeobox DNA-binding domain. PROX1 plays a fundamental role in early development of CNS and regulated the expression of gene and development of postmitotic undifferentiated young neuron. Also PROX1 is a specific and required regulator of the development of the lymphatic system. This is a rabbit polyclonal antibody raised against part of C-terminal chain of human PROX1. The calculated molecular weight of PROX1 is 83 kDa, but modified PROX1 is about 90 kDa.

### Notable Publications

Author	Pubmed ID	Journal	Application
Yoshiya Asano	28875528	J Tissue Eng Regen Med	
R Sathish Srinivasan	25274728	Genes Dev	WB, IF, CHIP
Jian-Gang Ren	28552828	Hum Pathol	IHC

### Storage

**Storage:**

Store at -20°C. Stable for one year after shipment.

**Storage Buffer:**

PBS with 0.1% sodium azide and 50% glycerol pH 7.3.

Aliquoting is unnecessary for -20°C storage

For technical support and original validation data for this product please contact:

T: 1 (888) 4PTGLAB (1-888-478-4522) (toll free in USA), or 1(312) 455-8498 (outside USA)

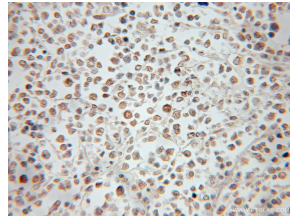
E: [proteintech@ptglab.com](mailto:proteintech@ptglab.com)  
W: [ptglab.com](http://ptglab.com)

This product is exclusively available under Proteintech Group brand and is not available to purchase from any other manufacturer.

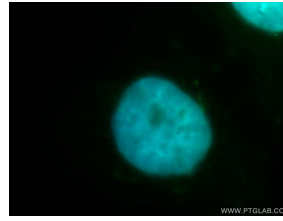
## Selected Validation Data



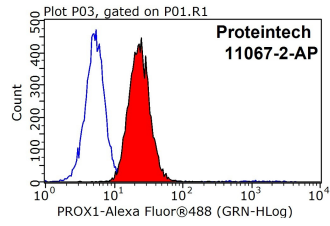
human liver tissue were subjected to SDS PAGE followed by western blot with 11067-2-AP(PROX1 antibody) at dilution of 1:500 incubated at room temperature for 1.5 hours



Immunohistochemical of paraffin-embedded human lymphoma using 11067-2-AP(PROX1 antibody) at dilution of 1:50 (under 10x lens)



Immunofluorescent analysis of HepG2 cells, using PROX1 antibody 11067-2-AP at 1:100 dilution and FITC-labeled donkey anti-rabbit IgG(green). Blue pseudocolor = DAPI (fluorescent DNA dye).



1X10<sup>6</sup> HepG2 cells were stained with 0.2ug PROX1 antibody (11067-2-AP, red) and control antibody (blue). Fixed with 90% MeOH blocked with 3% BSA (30 min). Alexa Fluor 488-conjugated AffiniPure Goat Anti-Rabbit IgG(H+L) with dilution 1:1000.