

For Research Use Only

# UBE2A Polyclonal antibody

Catalog Number: 11080-1-AP **3 Publications**



## Basic Information

<b>Catalog Number:</b> 11080-1-AP	<b>GenBank Accession Number:</b> BC010175	<b>Purification Method:</b> Antigen affinity purification
<b>Size:</b> 150ul , Concentration: 300 µg/ml by Nanodrop and 200 µg/ml by Bradford method using BSA as the standard;	<b>GeneID (NCBI):</b> 7319	<b>Recommended Dilutions:</b> WB 1:500-1:1000 IHC 1:50-1:500
<b>Source:</b> Rabbit	<b>Full Name:</b> ubiquitin-conjugating enzyme E2A (RAD6 homolog)	
<b>Isotype:</b> IgG	<b>Calculated MW:</b> 17 kDa	
<b>Immunogen Catalog Number:</b> AG1567	<b>Observed MW:</b> 17 kDa	

## Applications

<b>Tested Applications:</b> IHC, WB, ELISA	<b>Positive Controls:</b> WB : HEK-293 cells, COLO 320 cells, human kidney tissue, human placenta tissue IHC : human nasopharyngeal carcinoma tissue,
<b>Cited Applications:</b> WB	
<b>Species Specificity:</b> human	
<b>Cited Species:</b> human, mouse, rat	

**Note-IHC: suggested antigen retrieval with TE buffer pH 9.0; (\*) Alternatively, antigen retrieval may be performed with citrate buffer pH 6.0**

## Background Information

UBE2A(Ubiquitin-conjugating enzyme E2 A) serves as the cognate E2-conjugating enzyme. It plays a critical role in regulating TP53 protein levels under both normal and stress conditions. UBE2A, UBE2B regulates TP53 levels in a "yin-yang" manner through a combination of two distinct mechanisms in mammalian cells(PMID:22083959). This protein has 3 isoforms produced by alternative splicing.

## Notable Publications

Author	Pubmed ID	Journal	Application
Bin Li	33604685	Mol Med Rep	WB
Fabienne C Fiesel	24928900	J Cell Sci	WB
Maki Asami	36729835	Cell Rep	WB

## Storage

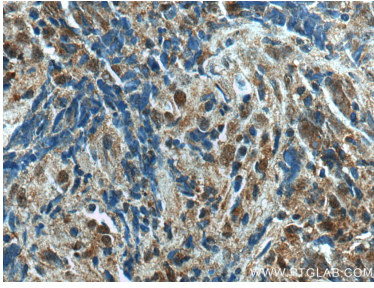
**Storage:**  
Store at -20°C. Stable for one year after shipment.  
**Storage Buffer:**  
PBS with 0.02% sodium azide and 50% glycerol pH 7.3.  
Aliquoting is unnecessary for -20°C storage

\*\*\* 20ul sizes contain 0.1% BSA

For technical support and original validation data for this product please contact:  
T: 1 (888) 4PTGLAB (1-888-478-4522) (toll free in USA), or 1(312) 455-8498 (outside USA)  
E: proteintech@ptglab.com  
W: ptglab.com

This product is exclusively available under Proteintech Group brand and is not available to purchase from any other manufacturer.

## Selected Validation Data



Immunohistochemical analysis of paraffin-embedded human nasopharyngeal carcinoma tissue slide using 11080-1-AP (UBE2A antibody) at dilution of 1:200 (under 40x lens)..



HEK-293 cells were subjected to SDS PAGE followed by western blot with 11080-1-AP (UBE2A antibody) at dilution of 1:600 incubated at room temperature for 1.5 hours.