

For Research Use Only

# PPP1CC Polyclonal antibody

Catalog Number: 11082-1-AP **7 Publications**



## Basic Information

<b>Catalog Number:</b> 11082-1-AP	<b>GenBank Accession Number:</b> BC014073	<b>Purification Method:</b> Antigen affinity purification
<b>Size:</b> 150ul, Concentration: 400 µg/ml by Nanodrop;	<b>GeneID (NCBI):</b> 5501	<b>Recommended Dilutions:</b> WB 1:2000-1:16000
<b>Source:</b> Rabbit	<b>UNIPROT ID:</b> P36873	<b>IP</b> 0.5-4.0 ug for 1.0-3.0 mg of total protein lysate
<b>Isotype:</b> IgG	<b>Full Name:</b> protein phosphatase 1, catalytic subunit, gamma isoform	<b>IHC</b> 1:50-1:500
<b>Immunogen Catalog Number:</b> AG1550	<b>Calculated MW:</b> 35 kDa	<b>IF</b> 1:50-1:500
	<b>Observed MW:</b> 35 kDa	

## Applications

<b>Tested Applications:</b> WB, IP, IF, IHC, ELISA	<b>Positive Controls:</b>
<b>Cited Applications:</b> WB, IP	<b>WB :</b> HEK-293 cells, MCF-7 cells, L02 cells, HEK-293T cells, mouse brain tissue, rat brain tissue
<b>Species Specificity:</b> human, mouse, rat	<b>IP :</b> HEK-293 cells,
<b>Cited Species:</b> human, rat, mouse	<b>IHC :</b> human pancreas cancer tissue,
	<b>IF :</b> HEK-293 cells,

**Note-IHC: suggested antigen retrieval with TE buffer pH 9.0; (\*) Alternatively, antigen retrieval may be performed with citrate buffer pH 6.0**

## Background Information

PPP1CC, also named as PP-1G, belongs to the PPP phosphatase family and PP-1 subfamily. Protein phosphatase 1 (PP1) is essential for cell division, and participates in the regulation of glycogen metabolism, muscle contractility and protein synthesis. It is involved in regulation of ionic conductances and long-term synaptic plasticity. PPP1CC may play an important role in dephosphorylating substrates such as the postsynaptic density-associated Ca<sup>2+</sup>/calmodulin dependent protein kinase II.

## Notable Publications

Author	Pubmed ID	Journal	Application
Ru-Jia Liao	25224648	Clin Exp Pharmacol Physiol	WB, IP
Xiaoman Zhu	36096985	Cell Death Dis	WB
Chao Huang	24196533	Am J Physiol Cell Physiol	WB

## Storage

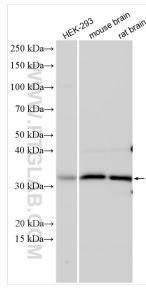
**Storage:**  
Store at -20°C. Stable for one year after shipment.  
**Storage Buffer:**  
PBS with 0.02% sodium azide and 50% glycerol pH 7.3.  
Aliquoting is unnecessary for -20°C storage

**\*\*\* 20ul sizes contain 0.1% BSA**

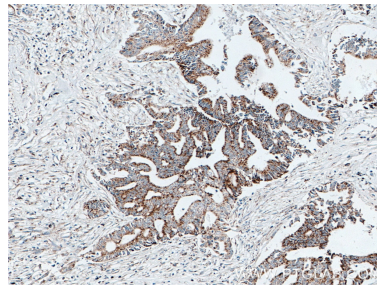
For technical support and original validation data for this product please contact:  
T: 1 (888) 4PTGLAB (1-888-478-4522) (toll free in USA), or 1(312) 455-8498 (outside USA)  
E: proteintech@ptglab.com  
W: ptglab.com

**This product is exclusively available under Proteintech Group brand and is not available to purchase from any other manufacturer.**

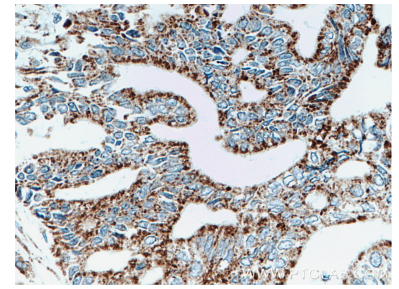
## Selected Validation Data



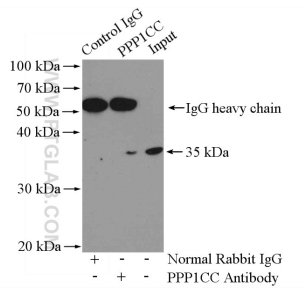
Various lysates were subjected to SDS PAGE followed by western blot with 11082-1-AP (PPP1CC antibody) at dilution of 1:8000 incubated at room temperature for 1.5 hours.



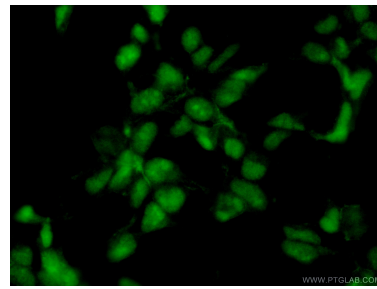
Immunohistochemical analysis of paraffin-embedded human pancreas cancer tissue slide using 11082-1-AP (PPP1CC antibody) at dilution of 1:200 (under 10x lens. Heat mediated antigen retrieval with Tris-EDTA buffer (pH 9.0).



Immunohistochemical analysis of paraffin-embedded human pancreas cancer tissue slide using 11082-1-AP (PPP1CC antibody) at dilution of 1:200 (under 40x lens. Heat mediated antigen retrieval with Tris-EDTA buffer (pH 9.0).



IP result of anti-PPP1CC (IP:11082-1-AP, 4ug; Detection:11082-1-AP 1:500) with HEK-293 cells lysate 2000ug.



Immunofluorescent analysis of (10% Formaldehyde) fixed HEK-293 cells using 11082-1-AP (PPP1CC antibody) at dilution of 1:50 and Alexa Fluor 488-conjugated AffiniPure Goat Anti-Rabbit IgG(H+L).