

For Research Use Only

# c-SRC Polyclonal antibody

Catalog Number: 11097-1-AP

77 Publications



## Basic Information

### Catalog Number:

11097-1-AP

### Size:

150ul, Concentration: 800 ug/ml by Nanodrop;

### Source:

Rabbit

### Isotype:

IgG

### Immunogen Catalog Number:

AG1575

### GenBank Accession Number:

BC011566

### GeneID (NCBI):

6714

### ENSEMBL Gene ID:

ENSG00000197122

### UNIPROT ID:

P12931

### Full Name:

v-src sarcoma (Schmidt-Ruppin A-2)  
viral oncogene homolog (avian)

### Calculated MW:

60 kDa

### Observed MW:

55 kDa, 60 kDa

### Purification Method:

Antigen affinity purification

### Recommended Dilutions:

WB 1:500-1:3000

IP 0.5-4.0 ug for 1.0-3.0 mg of total protein lysate

IHC 1:100-1:400

IF/ICC 1:200-1:800

## Applications

### Tested Applications:

WB, IHC, IF/ICC, IP, ELISA

### Cited Applications:

WB, IHC, IF, IP, CoIP

### Species Specificity:

human, mouse, rat, hamster

### Cited Species:

human, mouse, rat

**Note-IHC: suggested antigen retrieval with TE buffer pH 9.0; (\*) Alternatively, antigen retrieval may be performed with citrate buffer pH 6.0**

### Positive Controls:

**WB**: HUVEC cells, mouse brain tissue, COLO 320 cells, Jurkat cells, A431 cells, CHO cells, SH-SY5Y cells

**IP**: SH-SY5Y cells,

**IHC**: human breast cancer tissue, human brain tissue, human spleen tissue

**IF/ICC**: A431 cells, MCF-7 cells

## Background Information

SRC, also named as SRC1 and p60-Src, belongs to the protein kinase superfamily, Tyr protein kinase family and SRC subfamily. It is a non-receptor protein tyrosine kinase that plays pivotal roles in numerous cellular processes such as proliferation, migration, and transformation. In concert with PTK2B, SRC plays an important role in osteoclastic bone resorption. It promotes energy production in osteoclasts by activating mitochondrial cytochrome C oxidase. SRC can be detected as 60 kDa and 55 kDa (PMID: 15047935, 21461171).

## Notable Publications

Author	Pubmed ID	Journal	Application
YanHua Fan	36174847	Fitoterapia	WB
Lianhong Yin	29033837	Front Pharmacol	WB
Jiao Wu	34517345	Aging (Albany NY)	WB

## Storage

### Storage:

Store at -20°C. Stable for one year after shipment.

### Storage Buffer:

PBS with 0.02% sodium azide and 50% glycerol, pH7.3

Aliquoting is unnecessary for -20°C storage

\*\*\* 20ul sizes contain 0.1% BSA

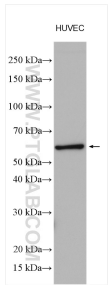
For technical support and original validation data for this product please contact:

T: 1 (888) 4PTGLAB (1-888-478-4522) (toll free in USA), or 1(312) 455-8498 (outside USA)

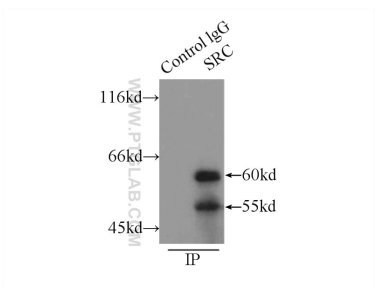
E: [proteintech@ptglab.com](mailto:proteintech@ptglab.com)  
W: [ptglab.com](http://ptglab.com)

This product is exclusively available under Proteintech Group brand and is not available to purchase from any other manufacturer.

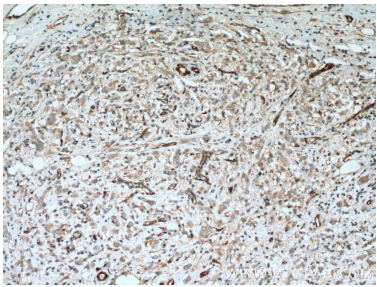
Selected Validation Data



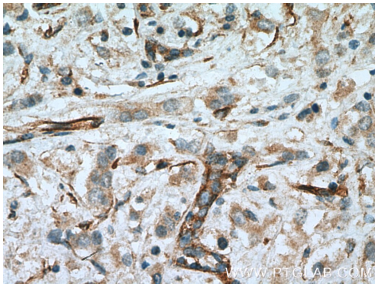
Various lysates were subjected to SDS PAGE followed by western blot with 11097-1-AP (SRC antibody) at dilution of 1:1500 incubated at room temperature for 1.5 hours.



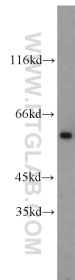
IP result of anti-c-SRC (IP:11097-1-AP, 5ug; Detection:11097-1-AP 1:1000) with SH-SY5Y cells lysate 2900ug.



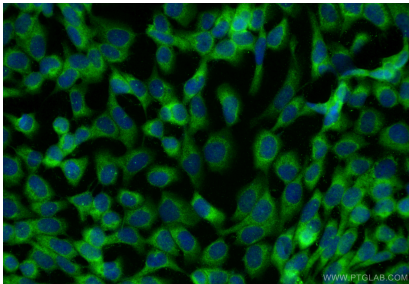
Immunohistochemical analysis of paraffin-embedded human breast cancer tissue slide using 11097-1-AP (c-SRC Antibody) at dilution of 1:200 (under 10x lens). Heat mediated antigen retrieval with Tris-EDTA buffer (pH 9.0).



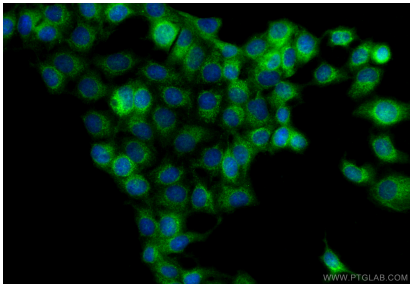
Immunohistochemical analysis of paraffin-embedded human breast cancer tissue slide using 11097-1-AP (c-SRC Antibody) at dilution of 1:200 (under 40x lens). Heat mediated antigen retrieval with Tris-EDTA buffer (pH 9.0).



Jurkat cells were subjected to SDS PAGE followed by western blot with 11097-1-AP (SRC antibody) at dilution of 1:1000 incubated at room temperature for 1.5 hours.



Immunofluorescent analysis of (-20°C Methanol) fixed A431 cells using c-SRC antibody (11097-1-AP) at dilution of 1:400 and CoraLite®488-Conjugated Goat Anti-Rabbit IgG(H+L) (SA00013-2).



Immunofluorescent analysis of (4% PFA) fixed MCF-7 cells using c-SRC antibody (11097-1-AP) at dilution of 1:200 and CoraLite®488-Conjugated Goat Anti-Rabbit IgG(H+L) (SA00013-2).