

For Research Use Only

# ARHGEF10 Polyclonal antibody

Catalog Number: 11112-1-AP

Featured Product

2 Publications



## Basic Information

<b>Catalog Number:</b> 11112-1-AP	<b>GenBank Accession Number:</b> BC036809	<b>Purification Method:</b> Antigen affinity purification
<b>Size:</b> 150ul , Concentration: 500 µg/ml by Nanodrop;	<b>GeneID (NCBI):</b> 9639	<b>Recommended Dilutions:</b> IHC 1:50-1:500
<b>Source:</b> Rabbit	<b>Full Name:</b> Rho guanine nucleotide exchange factor (GEF) 10	
<b>Isotype:</b> IgG	<b>Calculated MW:</b> 147 kDa	
<b>Immunogen Catalog Number:</b> AG1605		

## Applications

**Tested Applications:**  
IHC, ELISA

**Cited Applications:**  
IF, WB

**Species Specificity:**  
human, mouse, rat

**Cited Species:**  
mouse

**Note-IHC: suggested antigen retrieval with TE buffer pH 9.0; (\*) Alternatively, antigen retrieval may be performed with citrate buffer pH 6.0**

**Positive Controls:**

IHC : human lung cancer tissue,

## Background Information

ARHGEF10 (Rho guanine nucleotide exchange factor 10), also named as KIAA0294, is a member of the family of Rho guanine nucleotide exchange factors (GEFs), which are implicated in neural morphogenesis and connectivity and regulate the activity of small Rho GTPases by catalyzing the exchange of bound GDP by GTP (PMID:14508709). The deduced 1,121-amino acid protein shares significant similarity with cell signaling proteins (PMID:9205841). Defects in ARHGEF10 are the cause of slowed nerve conduction velocity (SNCV) (PMID:14508709). It has 5 isoforms produced by alternative splicing.

## Notable Publications

Author	Pubmed ID	Journal	Application
Dai-Hua Lu	29456827	Mol Autism	WB
Dai-Hua Lu	28799234	J Thromb Haemost	WB, IF

## Storage

**Storage:**

Store at -20°C. Stable for one year after shipment.

**Storage Buffer:**

PBS with 0.02% sodium azide and 50% glycerol pH 7.3.

Aliquoting is unnecessary for -20°C storage

\*\*\* 20ul sizes contain 0.1% BSA

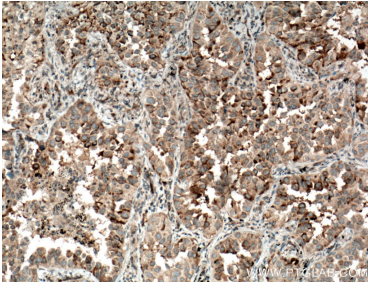
For technical support and original validation data for this product please contact:

T: 1 (888) 4PTGLAB (1-888-478-4522) (toll free in USA), or 1(312) 455-8498 (outside USA)

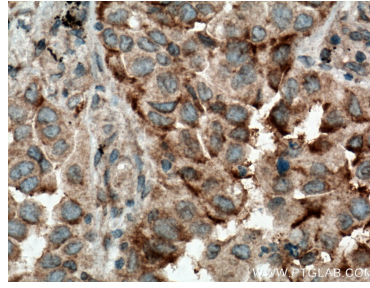
E: proteintech@ptglab.com  
W: ptglab.com

This product is exclusively available under Proteintech Group brand and is not available to purchase from any other manufacturer.

## Selected Validation Data



Immunohistochemical analysis of paraffin-embedded human lung cancer tissue slide using 11112-1-AP (ARHGEF10 antibody) at dilution of 1:200 (under 10x lens. Heat mediated antigen retrieval with Tris-EDTA buffer (pH 9.0).



Immunohistochemical analysis of paraffin-embedded human lung cancer tissue slide using 11112-1-AP (ARHGEF10 antibody) at dilution of 1:200 (under 40x lens. Heat mediated antigen retrieval with Tris-EDTA buffer (pH 9.0).