

For Research Use Only

ATG12 Polyclonal antibody

Catalog Number: 11122-1-AP

37 Publications



Basic Information

Catalog Number:

11122-1-AP

Size:

150ul, Concentration: 300 µg/ml by Nanodrop and 140 µg/ml by Bradford method using BSA as the standard;

Source:

Rabbit

Isotype:

IgG

Immunogen Catalog Number:

AG1586

GenBank Accession Number:

BC011033

GeneID (NCBI):

9140

UNIPROT ID:

O94817

Full Name:

ATG12 autophagy related 12 homolog (S. cerevisiae)

Calculated MW:

16 kDa

Observed MW:

48-50 kDa

Purification Method:

Antigen affinity purification

Recommended Dilutions:

WB 1:500-1:1000

IP 0.5-4.0 µg for 1.0-3.0 mg of total protein lysate

IHC 1:20-1:200

Applications

Tested Applications:

WB, IP, IHC, ELISA

Cited Applications:

WB, IHC, IF, CoIP

Species Specificity:

human, mouse

Cited Species:

human, mouse, rat, pig, hamster

Note-IHC: suggested antigen retrieval with TE buffer pH 9.0; (*) Alternatively, antigen retrieval may be performed with citrate buffer pH 6.0

Positive Controls:

WB: human bladder tissue, UV treated HEK-293

IP: HEK-293 cells,

IHC: human prostate cancer tissue,

Background Information

ATG12, also named as APG12 and APG12L, belongs to the ATG12 family. It is required for autophagy. Free ATG12 is 15kd or 8kd. Conjugated to ATG5, ATG12-ATG5 show 48-55kd.

Notable Publications

| Author | Pubmed ID | Journal | Application |
|---------------|-----------|---------------|-------------|
| Samana Batool | 30274346 | Int J Mol Sci | WB |
| Yannan Liu | 30207362 | Food Funct | WB, IHC |
| Min Liu | 28871079 | Nat Commun | WB |

Storage

Storage:

Store at -20°C. Stable for one year after shipment.

Storage Buffer:

PBS with 0.02% sodium azide and 50% glycerol, pH7.3

Aliquoting is unnecessary for -20°C storage

*** 20ul sizes contain 0.1% BSA

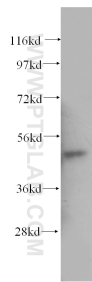
For technical support and original validation data for this product please contact:

T: 1 (888) 4PTGLAB (1-888-478-4522) (toll free in USA), or 1(312) 455-8498 (outside USA)

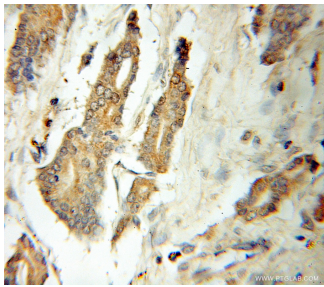
E: proteintech@ptglab.com
W: ptglab.com

This product is exclusively available under Proteintech Group brand and is not available to purchase from any other manufacturer.

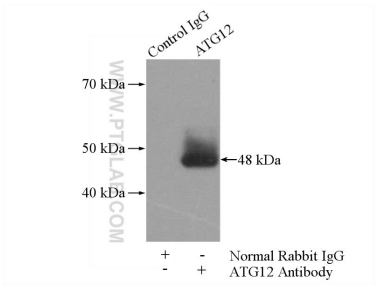
Selected Validation Data



human bladder tissue were subjected to SDS PAGE followed by western blot with 11122-1-AP (ATG12 antibody) at dilution of 1:500 incubated at room temperature for 1.5 hours.



Immunohistochemical analysis of paraffin-embedded human prostate cancer using 11122-1-AP (ATG12 antibody) at dilution of 1:50 (under 10x lens).



IP result of anti-ATG12 (IP:11122-1-AP, 4ug; Detection:11122-1-AP 1:300) with HEK-293 cells lysate 880ug.