

For Research Use Only

TIM10 Polyclonal antibody

Catalog Number: 11124-2-AP **3 Publications**



Basic Information

Catalog Number: 11124-2-AP	GenBank Accession Number: BC032133	Purification Method: Antigen affinity purification
Size: 150ul , Concentration: 600 ug/ml by Nanodrop and 340 ug/ml by Bradford method using BSA as the standard;	GeneID (NCBI): 26519	Recommended Dilutions: WB 1:500-1:2000 IHC 1:20-1:200
Source: Rabbit	UNIPROT ID: P62072	
Isotype: IgG	Full Name: translocase of inner mitochondrial membrane 10 homolog (yeast)	
Immunogen Catalog Number: AG1615	Calculated MW: 10 kDa	
	Observed MW: 10 kDa	

Applications

Tested Applications: WB, IHC, ELISA	Positive Controls: WB : MCF-7 cells, MDA-MB-231 cells IHC : human colon cancer tissue,
Cited Applications: WB	
Species Specificity: human	
Cited Species: human, rat	
Note-IHC: suggested antigen retrieval with TE buffer pH 9.0; (*) Alternatively, antigen retrieval may be performed with citrate buffer pH 6.0	

Notable Publications

Author	Pubmed ID	Journal	Application
Rashim Pal Singh	32416059	Cell Stem Cell	WB
Wei Ou	33964586	Redox Biol	WB
Rui Huang	24817082	PLoS One	WB

Storage

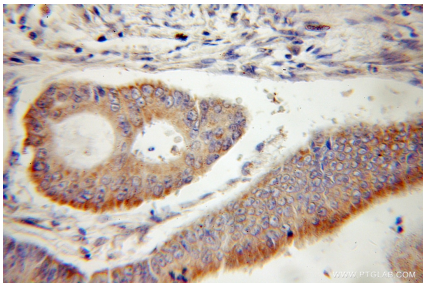
Storage:
Store at -20°C. Stable for one year after shipment.
Storage Buffer:
PBS with 0.02% sodium azide and 50% glycerol, pH7.3
Aliquoting is unnecessary for -20°C storage

*** 20ul sizes contain 0.1% BSA

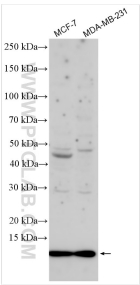
For technical support and original validation data for this product please contact:
T: 1 (888) 4PTGLAB (1-888-478-4522) (toll free in USA), or 1(312) 455-8498 (outside USA)
E: proteintech@ptglab.com
W: ptglab.com

This product is exclusively available under Proteintech Group brand and is not available to purchase from any other manufacturer.

Selected Validation Data



Immunohistochemical analysis of paraffin-embedded human colon cancer using 11124-2-AP (TIMM10 antibody) at dilution of 1:50 (under 25x lens).



Various lysates were subjected to SDS PAGE followed by western blot with 11124-2-AP (TIM10 antibody) at dilution of 1:1000 incubated at room temperature for 1.5 hours.