

For Research Use Only

# SEC61G Polyclonal antibody

Catalog Number: 11147-2-AP

Featured Product

18 Publications



## Basic Information

<b>Catalog Number:</b> 11147-2-AP	<b>GenBank Accession Number:</b> BC009480	<b>Purification Method:</b> Antigen affinity purification
<b>Size:</b> 150ul , Concentration: 600 µg/ml by Nanodrop and 300 µg/ml by Bradford method using BSA as the standard;	<b>GeneID (NCBI):</b> 23480	<b>Recommended Dilutions:</b> WB 1:500-1:1000 IHC 1:20-1:200
<b>Source:</b> Rabbit	<b>Full Name:</b> Sec61 gamma subunit	
<b>Isotype:</b> IgG	<b>Calculated MW:</b> 7.7 kDa	
<b>Immunogen Catalog Number:</b> AG1624	<b>Observed MW:</b> 7.7 kDa	

## Applications

<b>Tested Applications:</b> IHC, WB, ELISA	<b>Positive Controls:</b> WB : EC109 cells, HEK-293 cells, DC2.4 cells IHC : human colon cancer tissue,
<b>Cited Applications:</b> IF, IHC, IP, WB	
<b>Species Specificity:</b> human, mouse, rat	
<b>Cited Species:</b> human, rat, mouse	
<b>Note-IHC: suggested antigen retrieval with TE buffer pH 9.0; (*) Alternatively, antigen retrieval may be performed with citrate buffer pH 6.0</b>	

## Background Information

SEC61G is a subunit of the SEC61 complex, which also contains alpha (SEC61A) and beta (SEC61B) subunits. The SEC61 complex is the central component of the protein translocation apparatus on the endoplasmic reticulum membrane. The gene of SEC61G maps to chromosome 7p11.2, and encodes a 68-amino acid single-pass membrane protein. This antibody can recognize endogenous SEC61G that migrates at a molecular mass of ~8 kDa.

## Notable Publications

Author	Pubmed ID	Journal	Application
Luka Smalinskaitė	36261528	Nature	IP
Qunhao Zheng	34774014	BMC Cancer	WB
Qian Zhang	35720482	Oncol Lett	WB

## Storage

**Storage:**  
Store at -20°C. Stable for one year after shipment.  
**Storage Buffer:**  
PBS with 0.02% sodium azide and 50% glycerol pH 7.3.  
Aliquoting is unnecessary for -20°C storage

\*\*\* 20ul sizes contain 0.1% BSA

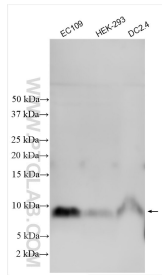
For technical support and original validation data for this product please contact:

T: 1 (888) 4PTGLAB (1-888-478-4522) (toll free in USA), or 1(312) 455-8498 (outside USA)

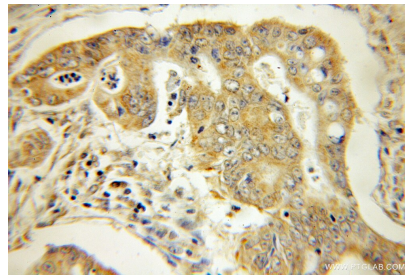
E: [proteintech@ptglab.com](mailto:proteintech@ptglab.com)  
W: [ptglab.com](http://ptglab.com)

This product is exclusively available under Proteintech Group brand and is not available to purchase from any other manufacturer.

## Selected Validation Data



Various lysates were subjected to SDS PAGE followed by western blot with 11147-2-AP (SEC61G antibody) at dilution of 1:500 incubated at room temperature for 1.5 hours.



Immunohistochemical analysis of paraffin-embedded human colon cancer using 11147-2-AP (SEC61G antibody) at dilution of 1:50 (under 10x lens).