

For Research Use Only

EIF5 Polyclonal antibody

Catalog Number: 11155-1-AP

5 Publications



Basic Information

Catalog Number:

11155-1-AP

Size:

150ul, Concentration: 700 ug/ml by Nanodrop and 467 ug/ml by Bradford method using BSA as the standard;

Source:

Rabbit

Isotype:

IgG

Immunogen Catalog Number:

AG1629

GenBank Accession Number:

BC032866

GeneID (NCBI):

1983

UNIPROT ID:

P55010

Full Name:

eukaryotic translation initiation factor 5

Calculated MW:

49 kDa

Observed MW:

50 kDa

Purification Method:

Antigen affinity purification

Recommended Dilutions:

WB 1:500-1:3000

IP 0.5-4.0 ug for 1.0-3.0 mg of total protein lysate

IHC 1:20-1:200

IF/ICC 1:200-1:800

Applications

Tested Applications:

WB, IHC, IF/ICC, IP, ELISA

Cited Applications:

WB, IHC, IF

Species Specificity:

human, mouse, rat

Cited Species:

human, mouse, goat

Note-IHC: suggested antigen retrieval with TE buffer pH 9.0; (*) Alternatively, antigen retrieval may be performed with citrate buffer pH 6.0

Positive Controls:

WB : HEK-293 cells, HeLa cells, HepG2 cells, NIH/3T3 cells

IP : HeLa cells,

IHC : human pancreas cancer tissue,

IF/ICC : HeLa cells,

Background Information

Eukaryotic translation initiation factor 5, also named as EIF5, is a 431 amino acid protein, which contains one W2 domain and belongs to the eIF-2-beta/eIF-5 family. EIF5 catalyzes the hydrolysis of GTP bound to the 40S ribosomal initiation complex with the subsequent joining of a 60S ribosomal subunit resulting in the release of eIF-2 and the guanine nucleotide. EIF5 plays multiple roles in translation initiation.

Notable Publications

Author	Pubmed ID	Journal	Application
Xiu-Yan Huang	31157168	Front Oncol	IHC
Jimmy Ly	39443796	Nature	WB
Jimmy Ly	38617206	bioRxiv	WB

Storage

Storage:

Store at -20°C. Stable for one year after shipment.

Storage Buffer:

PBS with 0.02% sodium azide and 50% glycerol pH 7.3.

Aliquoting is unnecessary for -20°C storage

*** 20ul sizes contain 0.1% BSA

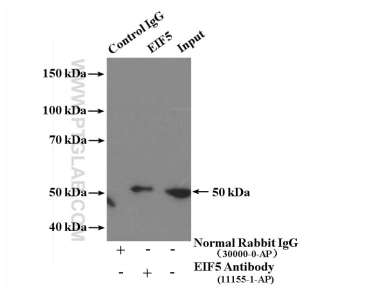
For technical support and original validation data for this product please contact:

T: 1 (888) 4PTGLAB (1-888-478-4522) (toll free in USA), or 1(312) 455-8498 (outside USA)

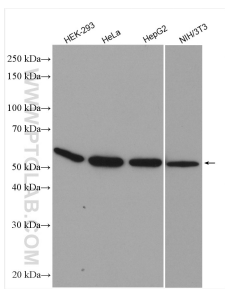
E: proteintech@ptglab.com
W: ptglab.com

This product is exclusively available under Proteintech Group brand and is not available to purchase from any other manufacturer.

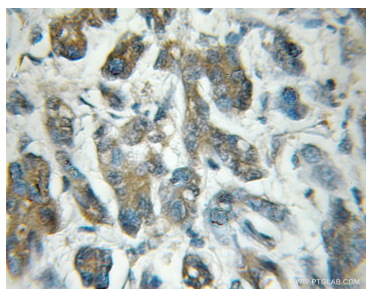
Selected Validation Data



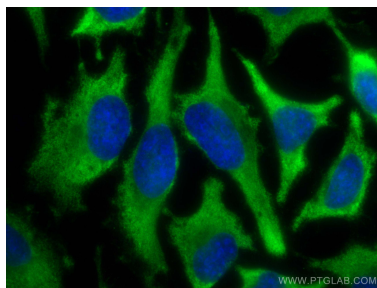
HeLa cells were subjected to SDS PAGE followed by western blot with 11155-1-AP (EIF5 antibody) at dilution of 1:300 incubated at 4 degree celsius over night.



Various lysates were subjected to SDS PAGE followed by western blot with 11155-1-AP (EIF5 antibody) at dilution of 1:1500 incubated at room temperature for 1.5 hours.



Immunohistochemical analysis of paraffin-embedded human pancreas cancer using 11155-1-AP (EIF5 antibody) at dilution of 1:50 (under 10x lens).



Immunofluorescent analysis of (-20°C Methanol) fixed HeLa cells using EIF5 antibody (11155-1-AP) at dilution of 1:400 and CoraLite®488-Conjugated Goat Anti-Rabbit IgG(H+L).