

For Research Use Only

EIF2S3 Polyclonal antibody

Catalog Number: 11162-1-AP

5 Publications



Basic Information

Catalog Number:

11162-1-AP

Size:

150ul, Concentration: 450 ug/ml by Nanodrop and 253 ug/ml by Bradford method using BSA as the standard;

Source:

Rabbit

Isotype:

IgG

Immunogen Catalog Number:

AG1650

GenBank Accession Number:

BC019906

GeneID (NCBI):

1968

UNIPROT ID:

P41091

Full Name:

eukaryotic translation initiation factor 2, subunit 3 gamma, 52kDa

Calculated MW:

52 kDa

Observed MW:

52 kDa

Purification Method:

Antigen affinity purification

Recommended Dilutions:

WB 1:500-1:2000

IP 0.5-4.0 ug for 1.0-3.0 mg of total protein lysate

IHC 1:50-1:500

IF/ICC 1:200-1:800

Applications

Tested Applications:

WB, IHC, IF/ICC, IP, ELISA

Cited Applications:

WB

Species Specificity:

human, mouse

Cited Species:

human

Positive Controls:

WB : mouse thymus tissue, HeLa cells

IP : HeLa cells,

IHC : human lung cancer tissue, human tonsillitis tissue

IF/ICC : HeLa cells,

Note-IHC: suggested antigen retrieval with TE buffer pH 9.0; (*) Alternatively, antigen retrieval may be performed with citrate buffer pH 6.0

Background Information

Interacts with GTP and initiator methionyl-tRNA, translation initiation factor eIF2 forms a ternary complex that binds the 40S ribosome and then scans an mRNA to select the AUG start codon for protein synthesis[PMID: 9736774]. Junction of the 60S ribosomal subunit to form the 80S initiation complex is preceded by hydrolysis of the GTP bound to eIF-2 and release of an eIF-2-GDP binary complex. In order for eIF-2 to recycle and catalyze another round of initiation, the GDP bound to eIF-2 must exchange with GTP by way of a reaction catalyzed by eIF-2B. EIF2S3 is the core subunit of the heterotrimeric eIF2 complex.[PMID:23063529]

Notable Publications

Author	Pubmed ID	Journal	Application
Nasim Haghandish	30699057	Mol Biol Cell	WB
Zhangqi Cao	38538250	Front Biosci (Landmark Ed)	WB
Archana Bairavasundaram Prusty	38368610	Cell Rep	WB

Storage

Storage:

Store at -20°C. Stable for one year after shipment.

Storage Buffer:

PBS with 0.02% sodium azide and 50% glycerol pH 7.3.

Aliquoting is unnecessary for -20°C storage

*** 20ul sizes contain 0.1% BSA

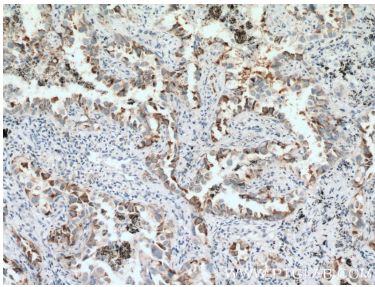
For technical support and original validation data for this product please contact:

T: 1 (888) 4PTGLAB (1-888-478-4522) (toll free in USA), or 1(312) 455-8498 (outside USA)

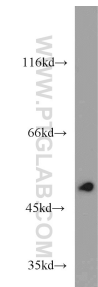
E: proteintech@ptglab.com
W: ptglab.com

This product is exclusively available under Proteintech Group brand and is not available to purchase from any other manufacturer.

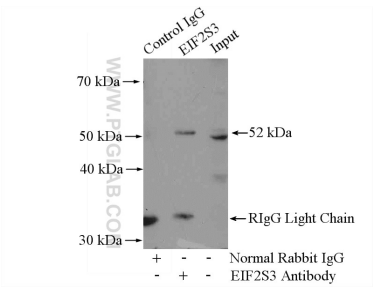
Selected Validation Data



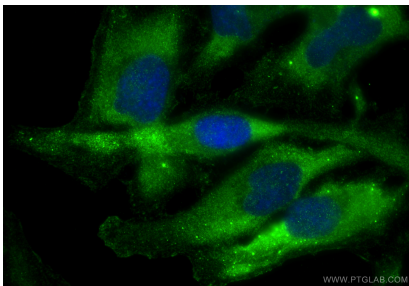
Immunohistochemical analysis of paraffin-embedded human lung cancer tissue slide using 11162-1-AP (EIF2S3 antibody) at dilution of 1:200 (under 10x lens. Heat mediated antigen retrieval with Tris-EDTA buffer (pH 9.0)).



mouse thymus tissue were subjected to SDS PAGE followed by western blot with 11162-1-AP (EIF2S3 antibody) at dilution of 1:1000 incubated at room temperature for 1.5 hours.



IP result of anti-EIF2S3 (IP:11162-1-AP, 4ug; Detection:11162-1-AP 1:500) with HeLa cells lysate 2800ug.



Immunofluorescent analysis of (-20°C Ethanol) fixed HeLa cells using EIF2S3 antibody (11162-1-AP) at dilution of 1:400 and CoraLite®488-Conjugated Goat Anti-Rabbit IgG(H+L) (SA00013-2).