

For Research Use Only

PSMA1 Polyclonal antibody

Catalog Number: 11175-1-AP

1 Publications



Basic Information

Catalog Number: 11175-1-AP	GenBank Accession Number: BC015105	Purification Method: Antigen affinity purification
Size: 150ul, Concentration: 200 µg/ml by Nanodrop and 160 µg/ml by Bradford method using BSA as the standard;	GeneID (NCBI): 5682	Recommended Dilutions: WB 1:500-1:1000 IHC 1:20-1:200 IF 1:10-1:100
Source: Rabbit	Full Name: proteasome (prosome, macropain) subunit, alpha type, 1	
Isotype: IgG	Calculated MW: 30 kDa	
Immunogen Catalog Number: AG1660	Observed MW: 29-33 kDa	

Applications

Tested Applications: IF, IHC, WB, ELISA	Positive Controls: WB: COLO 320 cells, HeLa cells, mouse kidney tissue, PC-3 cells IHC: human colon cancer tissue, IF: PC-3 cells,
Cited Applications: WB	
Species Specificity: human, mouse, rat	
Cited Species: rat	

Note-IHC: suggested antigen retrieval with TE buffer pH 9.0; (*) Alternatively, antigen retrieval may be performed with citrate buffer pH 6.0

Background Information

PSMA1(Proteasome subunit alpha type-1) is also named as HC2, NU, PROS30, PSC2 and belongs to the peptidase T1A family. The proteasome is a multicatalytic proteinase complex which is characterized by its ability to cleave peptides with Arg, Phe, Tyr, Leu, and Glu adjacent to the leaving group at neutral or slightly basic pH. It is induced in breast cancer tissue and up-regulated in liver tumor tissues (PMID:17127214;16317774;17004105).

Notable Publications

Author	Pubmed ID	Journal	Application
Wenjuan Zhang	33919255	Int J Mol Sci	WB

Storage

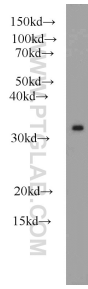
Storage:
Store at -20°C. Stable for one year after shipment.
Storage Buffer:
PBS with 0.02% sodium azide and 50% glycerol pH 7.3.
Aliquoting is unnecessary for -20°C storage

*** 20ul sizes contain 0.1% BSA

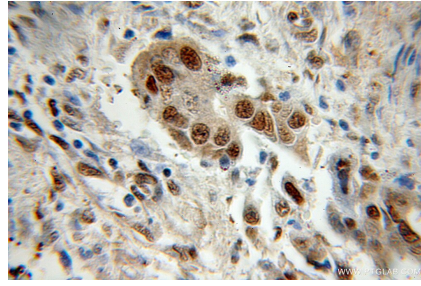
For technical support and original validation data for this product please contact:
T: 1 (888) 4PTGLAB (1-888-478-4522) (toll free in USA), or 1(312) 455-8498 (outside USA)
E: proteintech@ptglab.com
W: ptglab.com

This product is exclusively available under Proteintech Group brand and is not available to purchase from any other manufacturer.

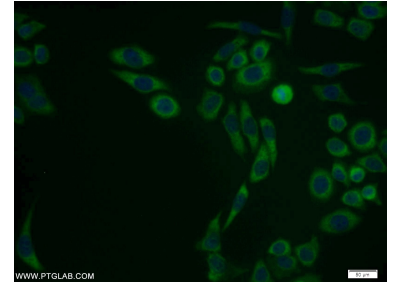
Selected Validation Data



COLO 320 cells were subjected to SDS PAGE followed by western blot with 11175-1-AP (PSMA1 antibody) at dilution of 1:600 incubated at room temperature for 1.5 hours.



Immunohistochemical analysis of paraffin-embedded human colon cancer using 11175-1-AP (PSMA1 antibody) at dilution of 1:50 (under 10x lens).



Immunofluorescent analysis of PC-3 cells using 11175-1-AP (PSMA1 antibody) at dilution of 1:25 and Alexa Fluor 488-conjugated AffiniPure Goat Anti-Rabbit IgG(H+L).