

For Research Use Only

TIMM8A Polyclonal antibody

Catalog Number: 11179-1-AP

Featured Product

7 Publications



Basic Information

Catalog Number:

11179-1-AP

Size:

150ul, Concentration: 600 ug/ml by Nanodrop and 600 ug/ml by Bradford method using BSA as the standard;

Source:

Rabbit

Isotype:

IgG

Immunogen Catalog Number:

AG1661

GenBank Accession Number:

BC015093

GeneID (NCBI):

1678

UNIPROT ID:

O60220

Full Name:

translocase of inner mitochondrial membrane 8 homolog A (yeast)

Calculated MW:

11 kDa

Observed MW:

11 kDa

Purification Method:

Antigen affinity purification

Recommended Dilutions:

WB: 1:500-1:3000

IP: 0.5-4.0 ug for 1.0-3.0 mg of total protein lysate

IHC: 1:200-1:800

IF/ICC: 1:50-1:500

Applications

Tested Applications:

WB, IHC, IF/ICC, IP, ELISA

Cited Applications:

WB, IF

Species Specificity:

human, mouse, rat

Cited Species:

human, mouse

Note-IHC: suggested antigen retrieval with TE buffer pH 9.0; (*) Alternatively, antigen retrieval may be performed with citrate buffer pH 6.0

Positive Controls:

WB: mouse testis tissue, rat testis tissue

IP: mouse testis tissue,

IHC: human intrahepatic cholangiocarcinoma tissue, human stomach cancer tissue

IF/ICC: HeLa cells,

Notable Publications

Author	Pubmed ID	Journal	Application
Yilin Kang	31682224	Elife	WB
Yanyan Sun	28492551	Cell Death Dis	WB
Addison Neighbors	31903733	Mol Genet Genomic Med	WB

Storage

Storage:

Store at -20°C. Stable for one year after shipment.

Storage Buffer:

PBS with 0.02% sodium azide and 50% glycerol, pH7.3

Aliquoting is unnecessary for -20°C storage

*** 20ul sizes contain 0.1% BSA

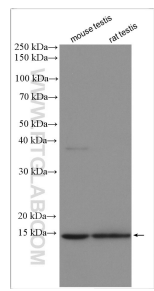
For technical support and original validation data for this product please contact:

T: 1 (888) 4PTGLAB (1-888-478-4522) (toll free in USA), or 1(312) 455-8498 (outside USA)

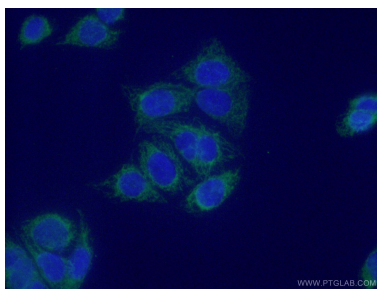
E: proteintech@ptglab.com
W: ptglab.com

This product is exclusively available under Proteintech Group brand and is not available to purchase from any other manufacturer.

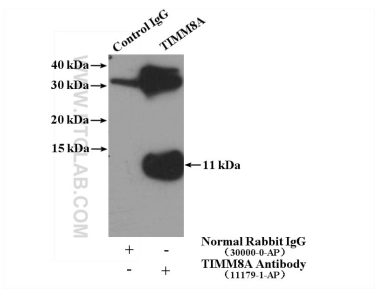
Selected Validation Data



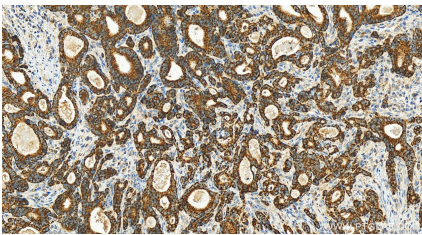
Various lysates were subjected to SDS PAGE followed by western blot with 11179-1-AP (TIMM8A antibody) at dilution of 1:1500 incubated at room temperature for 1.5 hours.



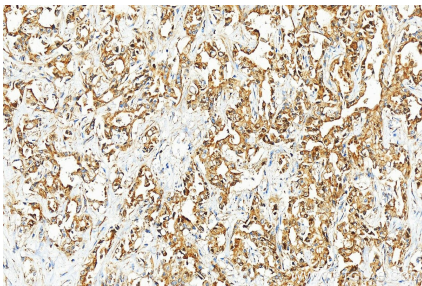
Immunofluorescent analysis of (4% PFA) fixed HeLa cells using 11179-1-AP (TIMM8A antibody) at dilution of 1:50 and Alexa Fluor 488-conjugated AffiniPure Goat Anti-Rabbit IgG(H+L).



IP result of anti-TIMM8A (IP:11179-1-AP, 4ug; Detection:11179-1-AP 1:500) with mouse testis tissue lysate 4000ug.



Immunohistochemical analysis of paraffin-embedded human stomach cancer tissue slide using 11179-1-AP (TIMM8A antibody) at dilution of 1:400 (under 20x lens). Heat mediated antigen retrieval with Tris-EDTA buffer (pH 9.0).



Immunohistochemical analysis of paraffin-embedded human intrahepatic cholangiocarcinoma tissue slide using 11179-1-AP (TIMM8A antibody) at dilution of 1:400 (under 20x lens). Heat mediated antigen retrieval with Tris-EDTA buffer (pH 9.0).