

For Research Use Only

# SUMF2 Polyclonal antibody

Catalog Number: 11210-1-AP **1 Publications**



## Basic Information

<b>Catalog Number:</b> 11210-1-AP	<b>GenBank Accession Number:</b> BC015600	<b>Purification Method:</b> Antigen affinity purification
<b>Size:</b> 150ul, Concentration: 240 µg/ml by Nanodrop and 220 µg/ml by Bradford method using BSA as the standard;	<b>GeneID (NCBI):</b> 25870	<b>Recommended Dilutions:</b> WB 1:1000-1:5000 IP 0.5-4.0 ug for IP and 1:1000-1:4000 for WB
<b>Source:</b> Rabbit	<b>Full Name:</b> sulfatase modifying factor 2	<b>IHC 1:50-1:500</b> <b>IF 1:50-1:500</b>
<b>Isotype:</b> IgG	<b>Calculated MW:</b> 34 kDa	
<b>Immunogen Catalog Number:</b> AG1711	<b>Observed MW:</b> 34 kDa	

## Applications

<b>Tested Applications:</b> IF, IHC, IP, WB, ELISA	<b>Positive Controls:</b>
<b>Cited Applications:</b> IHC, WB	<b>WB:</b> A431 cells, human skin tissue, human spleen tissue
<b>Species Specificity:</b> human, mouse, rat	<b>IP:</b> A431 cells, HeLa cells
<b>Cited Species:</b> rat	<b>IHC:</b> human breast cancer tissue, <b>IF:</b> A431 cells,
<b>Note-IHC: suggested antigen retrieval with TE buffer pH 9.0; (*) Alternatively, antigen retrieval may be performed with citrate buffer pH 6.0</b>	

## Background Information

### Notable Publications

Author	Pubmed ID	Journal	Application
Chuanfeng Fang	26722390	Int J Clin Exp Pathol	WB,IHC

## Storage

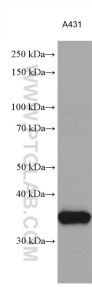
**Storage:**  
Store at -20°C. Stable for one year after shipment.  
**Storage Buffer:**  
PBS with 0.02% sodium azide and 50% glycerol pH 7.3.  
Aliquoting is unnecessary for -20°C storage

\*\*\* 20ul sizes contain 0.1% BSA

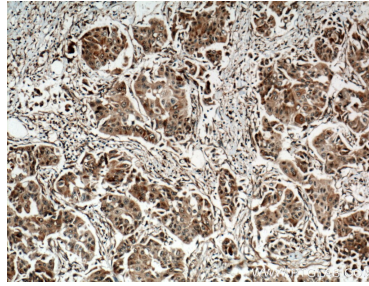
For technical support and original validation data for this product please contact:  
T: 1 (888) 4PTGLAB (1-888-478-4522) (toll free in USA), or 1(312) 455-8498 (outside USA) E: proteintech@ptglab.com W: ptglab.com

This product is exclusively available under Proteintech Group brand and is not available to purchase from any other manufacturer.

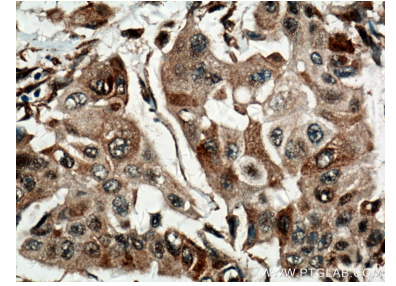
## Selected Validation Data



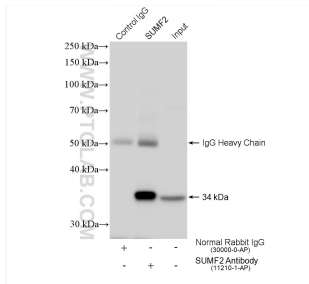
A431 cell lysates were subjected to SDS PAGE followed by western blot with 11210-1-AP (SUMF2 antibody) at dilution of 1:2500 incubated at room temperature for 1.5 hours.



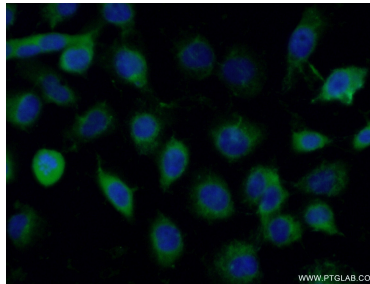
Immunohistochemical analysis of paraffin-embedded human breast cancer tissue slide using 11210-1-AP (SUMF2 antibody) at dilution of 1:200 (under 10x lens. Heat mediated antigen retrieval with Tris-EDTA buffer (pH 9.0).



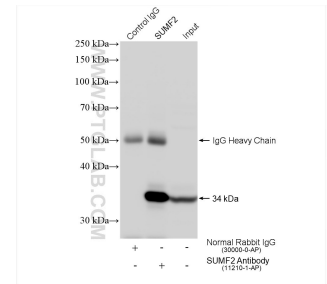
Immunohistochemical analysis of paraffin-embedded human breast cancer tissue slide using 11210-1-AP (SUMF2 antibody) at dilution of 1:200 (under 40x lens. Heat mediated antigen retrieval with Tris-EDTA buffer (pH 9.0).



IP result of anti-SUMF2(IP:11210-1-AP, 4ug; Detection:11210-1-AP 1:2000) with A431 cells lysate 2640 ug.



Immunofluorescent analysis of (-20°C Ethanol) fixed A431 cells using 11210-1-AP (SUMF2 antibody) at dilution of 1:50 and Alexa Fluor 488-conjugated AffiniPure Goat Anti-Rabbit IgG(H+L).



IP result of anti-SUMF2(IP:11210-1-AP, 4ug; Detection:11210-1-AP 1:2000) with HeLa cells lysate 1560 ug.