

For Research Use Only

# ALDOA Polyclonal antibody

Catalog Number: 11217-1-AP

Featured Product

72 Publications



## Basic Information

### Catalog Number:

11217-1-AP

### Size:

150ul, Concentration: 450 ug/ml by Nanodrop;

### Source:

Rabbit

### Isotype:

IgG

### Immunogen Catalog Number:

AG1726

### GenBank Accession Number:

BC016800

### GeneID (NCBI):

226

### UNIPROT ID:

P04075

### Full Name:

aldolase A, fructose-bisphosphate

### Calculated MW:

39 kDa

### Observed MW:

35-40 kDa

### Purification Method:

Antigen affinity purification

### Recommended Dilutions:

WB: 1:5000-1:50000

IP: 0.5-4.0 ug for 1.0-3.0 mg of total protein lysate

IHC: 1:100-1:400

IF/ICC: 1:50-1:500

## Applications

### Tested Applications:

WB, IHC, IF/ICC, IP, ELISA

### Cited Applications:

WB, IHC, IF, IP, CoIP, RIP

### Species Specificity:

human, mouse, rat

### Cited Species:

human, mouse, rat, pig, sheep

**Note-IHC: suggested antigen retrieval with TE buffer pH 9.0; (\*) Alternatively, antigen retrieval may be performed with citrate buffer pH 6.0**

### Positive Controls:

**WB**: HEK-293 cells, HeLa cells, A549 cells, Jurkat cells, mouse liver tissue, rat liver tissue, HepG2 cells, MCF-7 cells, NIH/3T3 cells

**IP**: HepG2 cells,

**IHC**: human colon cancer tissue, human lung cancer tissue, human skeletal muscle tissue

**IF/ICC**: HeLa cells,

## Background Information

ALDOA (Fructose-bisphosphate aldolase A) is also named as lung cancer antigen NY-LU-1, muscle-type aldolase, ALDA and belongs to the class I fructose-bisphosphate aldolase family. The ALDOA gene encodes a homotetrameric protein (PMID:14615364). It is found in skeletal muscle and red blood cells, and functions in glycolysis, promoting the reversible cleavage of FBP to triose phosphate, G-3-P and DHAP. ALDOA is upregulated in various cancers, including human lung squamous and renal cell carcinomas (PMID:19937139).

## Notable Publications

Author	Pubmed ID	Journal	Application
Bing Sun	27684953	PLoS One	WB
Salvador Polo-Genere	36136852	Noncoding RNA	RIP
Menghui Gu	36247245	Am J Transl Res	IHC, WB

## Storage

### Storage:

Store at -20°C. Stable for one year after shipment.

### Storage Buffer:

PBS with 0.02% sodium azide and 50% glycerol, pH7.3

Aliquoting is unnecessary for -20°C storage

\*\*\* 20ul sizes contain 0.1% BSA

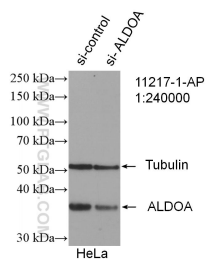
For technical support and original validation data for this product please contact:

T: 1 (888) 4PTGLAB (1-888-478-4522) (toll free in USA), or 1(312) 455-8498 (outside USA)

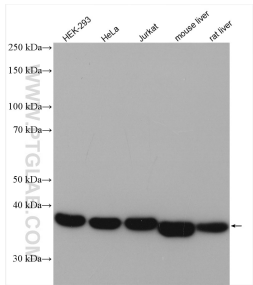
E: [proteintech@ptglab.com](mailto:proteintech@ptglab.com)  
W: [ptglab.com](http://ptglab.com)

This product is exclusively available under Proteintech Group brand and is not available to purchase from any other manufacturer.

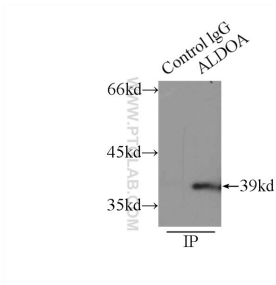
Selected Validation Data



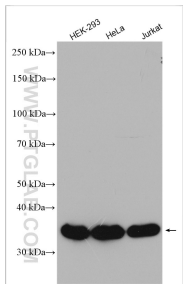
WB result of ALDOA antibody (11217-1-AP; 1:240000; incubated at room temperature for 1.5 hours) with sh-Control and sh-ALDOA transfected HeLa cells.



Various lysates were subjected to SDS PAGE followed by western blot with 11217-1-AP (ALDOA antibody) at dilution of 1:10000 incubated at room temperature for 1.5 hours.



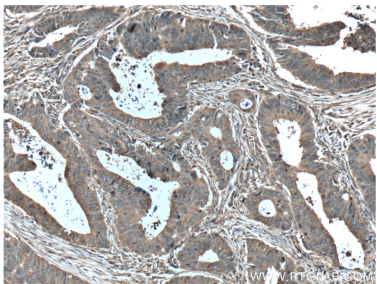
IP result of anti-ALDOA (IP: 11217-1-AP, 3ug; Detection: 11217-1-AP 1:1000) with HepG2 cells lysate 6000ug.



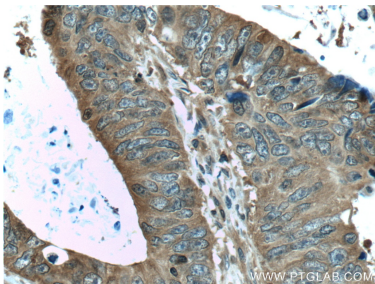
Various lysates were subjected to SDS PAGE followed by western blot with 11217-1-AP (ALDOA antibody) at dilution of 1:8000 incubated at room temperature for 1.5 hours.



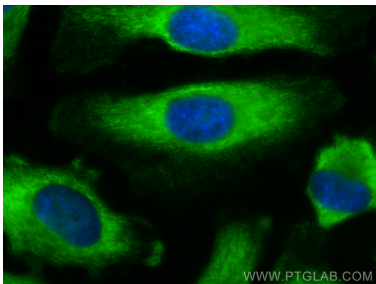
Various lysates were subjected to SDS PAGE followed by western blot with 11217-1-AP (ALDOA antibody) at dilution of 1:10000 incubated at room temperature for 1.5 hours.



Immunohistochemical analysis of paraffin-embedded human colon cancer tissue slide using 11217-1-AP (ALDOA Antibody) at dilution of 1:200 (under 10x lens). Heat mediated antigen retrieval with Tris-EDTA buffer (pH 9.0).



Immunohistochemical analysis of paraffin-embedded human colon cancer tissue slide using 11217-1-AP (ALDOA Antibody) at dilution of 1:200 (under 40x lens). Heat mediated antigen retrieval with Tris-EDTA buffer (pH 9.0).



Immunofluorescent analysis of (-20°C Methanol) fixed HeLa cells using ALDOA antibody (11217-1-AP) at dilution of 1:200 and Multi-rAb CoraLite® Plus 488-Goat Anti-Rabbit Recombinant Secondary Antibody (H+L) (RGAR002).