

For Research Use Only

# CREB3L1,OASIS Polyclonal antibody



Catalog Number: 11235-2-AP

Featured Product

9 Publications

## Basic Information

<b>Catalog Number:</b> 11235-2-AP	<b>GenBank Accession Number:</b> BC015781	<b>Purification Method:</b> Antigen affinity purification
<b>Size:</b> 150ul , Concentration: 850 µg/ml by Nanodrop and 400 µg/ml by Bradford method using BSA as the standard;	<b>GeneID (NCBI):</b> 90993	<b>Recommended Dilutions:</b> WB 1:500-1:1000 IHC 1:20-1:200 IF 1:50-1:500
<b>Source:</b> Rabbit	<b>Full Name:</b> cAMP responsive element binding protein 3-like 1	
<b>Isotype:</b> IgG	<b>Calculated MW:</b> 57 kDa	
<b>Immunogen Catalog Number:</b> AG1757	<b>Observed MW:</b> 55-58 kDa and 84 kDa	

## Applications

<b>Tested Applications:</b> IF, IHC, WB, ELISA	<b>Positive Controls:</b> WB : A549 cells, COLO 320 cells
<b>Cited Applications:</b> IHC, WB	<b>IHC :</b> human prostate cancer tissue,
<b>Species Specificity:</b> human, mouse, rat	<b>IF :</b> A549 cells,
<b>Cited Species:</b> human, rat	

**Note-IHC: suggested antigen retrieval with TE buffer pH 9.0; (\*) Alternatively, antigen retrieval may be performed with citrate buffer pH 6.0**

## Background Information

Cyclic AMP-responsive element-binding protein 3-like protein 1(CREB3L1) belongs to a family of transcription factors that are synthesized as membrane-bound precursors in the endoplasmic reticulum (ER) and then transported to the Golgi where they are activated through regulated intramembrane proteolysis (RIP). Also it participates in ER-stress response in astrocytes in the central nervous system. It may have a role in gliosis, and involves in activation of transcription through box-B element but not CRE. CREB3L1 acts as a transcription repressor in proliferation of virus-infected cell. The full-length precursor form (approximately 84 kDa) of CREB3L1 and the matured form of CREB3L1 is 58 kDa. (PMID: 20668028)

## Notable Publications

Author	Pubmed ID	Journal	Application
Mei-Xuan Wan	36299877	Front Pharmacol	WB
Xiaomei Liu	30524373	Front Endocrinol (Lausanne)	WB
Wei Xiao	31293656	J Cancer	IHC

## Storage

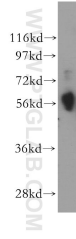
**Storage:**  
Store at -20°C. Stable for one year after shipment.  
**Storage Buffer:**  
PBS with 0.02% sodium azide and 50% glycerol pH 7.3.  
Aliquoting is unnecessary for -20°C storage

\*\*\* 20ul sizes contain 0.1% BSA

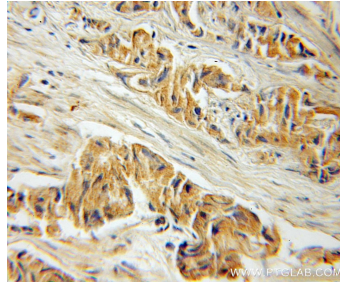
For technical support and original validation data for this product please contact:  
T: 1 (888) 4PTGLAB (1-888-478-4522) (toll free in USA), or 1(312) 455-8498 (outside USA)  
E: proteintech@ptglab.com  
W: ptglab.com

This product is exclusively available under Proteintech Group brand and is not available to purchase from any other manufacturer.

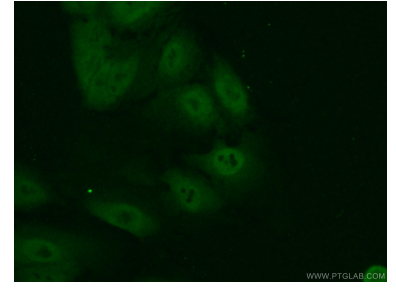
## Selected Validation Data



A549 cells were subjected to SDS PAGE followed by western blot with 11235-2-AP (CREB3L1,OASIS antibody) at dilution of 1:300 incubated at room temperature for 1.5 hours. This batch of A549 cells lysate predominantly expressed the maturer form likely due to cell stage.



Immunohistochemical analysis of paraffin-embedded human prostate cancer using 11235-2-AP (CREB3L1,OASIS antibody) at dilution of 1:50 (under 25x lens).



Immunofluorescent analysis of (10% Formaldehyde) fixed A549 cells using 11235-2-AP (CREB3L1,OASIS antibody) at dilution of 1:50 and Alexa Fluor 488-conjugated AffiniPure Goat Anti-Rabbit IgG(H+L).