

For Research Use Only

# TOM22 Polyclonal antibody

Catalog Number: 11278-1-AP **10 Publications**



## Basic Information

<b>Catalog Number:</b> 11278-1-AP	<b>GenBank Accession Number:</b> BC009363	<b>Purification Method:</b> Antigen affinity purification
<b>Size:</b> 150ul, Concentration: 400 ug/ml by Nanodrop and 267 ug/ml by Bradford method using BSA as the standard;	<b>GeneID (NCBI):</b> 56993	<b>Recommended Dilutions:</b> WB: 1:500-1:2000 IHC: 1:50-1:500 IF/ICC: 1:200-1:800
<b>Source:</b> Rabbit	<b>UNIPROT ID:</b> Q9NS69	
<b>Isotype:</b> IgG	<b>Full Name:</b> translocase of outer mitochondrial membrane 22 homolog (yeast)	
<b>Immunogen Catalog Number:</b> AG1797	<b>Calculated MW:</b> 15 kDa	
	<b>Observed MW:</b> 15-22 kDa	

## Applications

<b>Tested Applications:</b> WB, IHC, IF/ICC, ELISA	<b>Positive Controls:</b> WB: HeLa, K-562 cells, HeLa cells, mouse liver tissue IHC: human colon cancer tissue, IF/ICC: HepG2 cells,
<b>Cited Applications:</b> WB, IF	
<b>Species Specificity:</b> human, mouse, rat	
<b>Cited Species:</b> human, mouse	

**Note-IHC: suggested antigen retrieval with TE buffer pH 9.0; (\*) Alternatively, antigen retrieval may be performed with citrate buffer pH 6.0**

## Background Information

Tom22 is a central receptor component of the translocase of the outer membrane of mitochondria responsible for the recognition and translocation of cytosolically synthesized mitochondrial preproteins. It is showed in UniProt that phosphorylation is performed at three positions of this protein which may increase the molecular weight. Catalog#66562-1-Ig recognises the 22 kDa protein larger than the calculated MW which is 15 kDa. Besides, it has been reported the MV of TOMM22 is 22 kDa (PMID:19285029).

## Notable Publications

Author	Pubmed ID	Journal	Application
Bo Zhou	30287942	Cell Res	WB
Shan Xu	26564796	Mol Biol Cell	WB
Xi Cao	36408108	Front Aging Neurosci	WB

## Storage

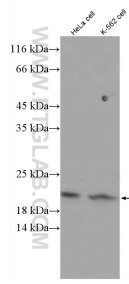
**Storage:**  
Store at -20°C. Stable for one year after shipment.  
**Storage Buffer:**  
PBS with 0.02% sodium azide and 50% glycerol, pH7.3  
Aliquoting is unnecessary for -20°C storage

\*\*\* 20ul sizes contain 0.1% BSA

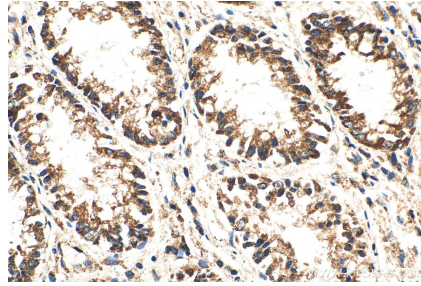
For technical support and original validation data for this product please contact:  
T: 1 (888) 4PTGLAB (1-888-478-4522) (toll free in USA), or 1(312) 455-8498 (outside USA)  
E: proteintech@ptglab.com  
W: ptglab.com

This product is exclusively available under Proteintech Group brand and is not available to purchase from any other manufacturer.

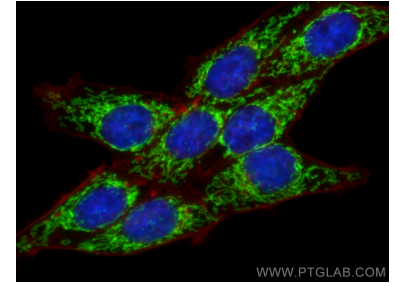
## Selected Validation Data



HeLa and K-562 cells were subjected to SDS PAGE followed by western blot with 11278-1-AP (Tom22 antibody) at dilution of 1:1500 incubated at room temperature for 1.5 hours.



Immunohistochemical analysis of paraffin-embedded human colon cancer tissue slide using 11278-1-AP (Tom22 antibody) at dilution of 1:200 (under 40x lens). Heat mediated antigen retrieval with Tris-EDTA buffer (pH 9.0).



Immunofluorescent analysis of (4% PFA) fixed HepG2 cells using Tom22 antibody (11278-1-AP) at dilution of 1:400 and CoraLite® 488-Conjugated Goat Anti-Rabbit IgG(H+L) (SA00013-2), CL594-Phalloidin (red).