

For Research Use Only

# TLE1 Polyclonal antibody

Catalog Number: 11284-1-AP

1 Publications



## Basic Information

### Catalog Number:

11284-1-AP

### Size:

150ul , Concentration: 133 µg/ml by Bradford method using BSA as the standard;

### Source:

Rabbit

### Isotype:

IgG

### Immunogen Catalog Number:

AG1801

### GenBank Accession Number:

BC010100

### GeneID (NCBI):

7088

### UNIPROT ID:

Q04724

### Full Name:

transducin-like enhancer of split 1 (E(sp1) homolog, Drosophila)

### Calculated MW:

83 kDa

### Purification Method:

Antigen affinity purification

### Recommended Dilutions:

IHC 1:50-1:500

## Applications

### Tested Applications:

IHC, ELISA

### Cited Applications:

WB, IF

### Species Specificity:

human, mouse, rat

### Cited Species:

human

### Positive Controls:

IHC : human gliomas tissue,

**Note-IHC: suggested antigen retrieval with TE buffer pH 9.0; (\*) Alternatively, antigen retrieval may be performed with citrate buffer pH 6.0**

## Background Information

Transducin-like enhancer protein 1(TLE1) is a transcriptional corepressor. It can bind to and regress expression of many transcription factors such as NFκB, which is mediated by FOXA2, CTNNB1 and TCF family member in Wnt signaling. The effects of full-length TLE family members may be modulated by association with dominant-negative AES. Expression of TLE1 is highest in skeletal muscle and liver, moderate in placenta, heart, kidney, and spleen, and weak in all other tissues including brain.

## Notable Publications

Author	Pubmed ID	Journal	Application
Zhang Lisheng L	23175432	Hepatology	WB,IF

## Storage

### Storage:

Store at -20°C. Stable for one year after shipment.

### Storage Buffer:

PBS with 0.02% sodium azide and 50% glycerol pH 7.3.

Aliquoting is unnecessary for -20°C storage

\*\*\* 20ul sizes contain 0.1% BSA

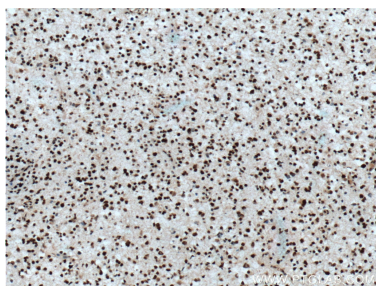
For technical support and original validation data for this product please contact:

T: 1 (888) 4PTGLAB (1-888-478-4522) (toll free in USA), or 1(312) 455-8498 (outside USA)

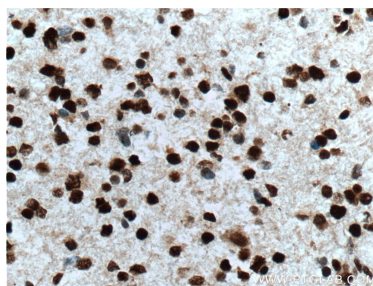
E: [proteintech@ptglab.com](mailto:proteintech@ptglab.com)  
W: [ptglab.com](http://ptglab.com)

This product is exclusively available under Proteintech Group brand and is not available to purchase from any other manufacturer.

## Selected Validation Data



Immunohistochemical analysis of paraffin-embedded human gliomas tissue slide using 11284-1-AP (TLE1 Antibody) at dilution of 1:200 (under 10x lens). Heat mediated antigen retrieval with Tris-EDTA buffer (pH 9.0).



Immunohistochemical analysis of paraffin-embedded human gliomas tissue slide using 11284-1-AP (TLE1 Antibody) at dilution of 1:200 (under 40x lens). Heat mediated antigen retrieval with Tris-EDTA buffer (pH 9.0).