

For Research Use Only

RPLPO Polyclonal antibody

Catalog Number: 11290-2-AP

24 Publications



Basic Information

Catalog Number:

11290-2-AP

Size:

150ul, Concentration: 400 ug/ml by Nanodrop;

Source:

Rabbit

Isotype:

IgG

Immunogen Catalog Number:

AG1829

GenBank Accession Number:

BC009867

GeneID (NCBI):

6175

UNIPROT ID:

P05388

Full Name:

ribosomal protein, large, PO

Calculated MW:

34 kDa

Observed MW:

34 kDa

Purification Method:

Antigen affinity purification

Recommended Dilutions:

WB 1:500-1:3000

IP 0.5-4.0 ug for 1.0-3.0 mg of total protein lysate

IHC 1:20-1:200

IF/ICC 1:50-1:500

Applications

Tested Applications:

WB, IHC, IF/ICC, IP, ELISA

Cited Applications:

WB, IHC, IF, RIP, ELISA

Species Specificity:

human, mouse, rat

Cited Species:

human, mouse, rat

Positive Controls:

WB : C6 cells,

IP : HeLa cells,

IHC : human colon cancer tissue,

IF/ICC : HeLa cells,

Note-IHC: suggested antigen retrieval with TE buffer pH 9.0; (*) Alternatively, antigen retrieval may be performed with citrate buffer pH 6.0

Background Information

RPLPO is first identified as a cytosolic protein which takes a part in the ribosomal stalk and interacts with RPLP1 and RPLP2. It also has potential roles in molecular transport from outside into the cells. It generally presents in multiple copies on the ribosome and have isoelectric points in the range of pH 3 to 5, in contrast to most ribosomal proteins, which are single copy and basic

Notable Publications

Author	Pubmed ID	Journal	Application
Marie-Claude Perry	25246633	Mol Cell Biol	WB
Yanping Zhu	32945042	Cancer Sci	WB
Ming Tong	26373814	Alcohol Alcohol	ELISA

Storage

Storage:

Store at -20°C. Stable for one year after shipment.

Storage Buffer:

PBS with 0.02% sodium azide and 50% glycerol, pH7.3

Aliquoting is unnecessary for -20°C storage

*** 20ul sizes contain 0.1% BSA

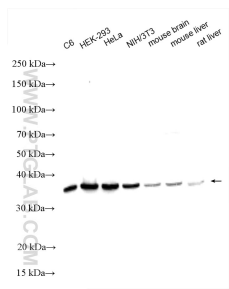
For technical support and original validation data for this product please contact:

T: 1 (888) 4PTGLAB (1-888-478-4522) (toll free in USA), or 1(312) 455-8498 (outside USA)

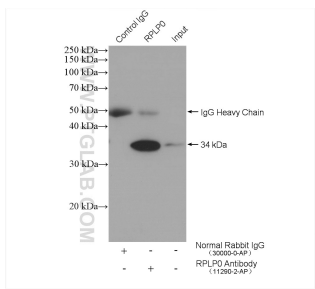
E: proteintech@ptglab.com
W: ptglab.com

This product is exclusively available under Proteintech Group brand and is not available to purchase from any other manufacturer.

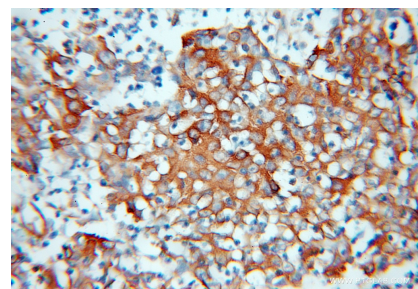
Selected Validation Data



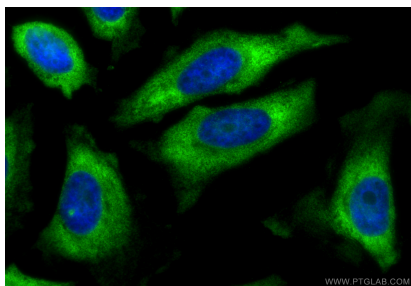
Various lysates were subjected to SDS PAGE followed by western blot with 11290-2-AP (RPLP0 antibody) at dilution of 1:1500 incubated at room temperature for 1.5 hours.



IP result of anti-RPLP0 (IP:11290-2-AP, 4ug; Detection:11290-2-AP 1:500) with HeLa cells lysate 2680 ug.



Immunohistochemical analysis of paraffin-embedded human colon cancer using 11290-2-AP (RPLP0 antibody) at dilution of 1:100 (under 10x lens).



Immunofluorescent analysis of (4% PFA) fixed HeLa cells using RPLP0 antibody (11290-2-AP) at dilution of 1:200 and CoraLite®488-Conjugated Goat Anti-Rabbit IgG(H+L) (SA00013-2).