

For Research Use Only

# SERPINE2 Polyclonal antibody

Catalog Number: 11303-1-AP

Featured Product

10 Publications



## Basic Information

### Catalog Number:

11303-1-AP

### Size:

150ul, Concentration: 450 ug/ml by Nanodrop;

### Source:

Rabbit

### Isotype:

IgG

### Immunogen Catalog Number:

AG1830

### GenBank Accession Number:

BC015663

### GeneID (NCBI):

5270

### UNIPROT ID:

P07093

### Full Name:

serpin peptidase inhibitor, clade E (nexin, plasminogen activator inhibitor type 1), member 2

### Calculated MW:

44 kDa

### Observed MW:

44-50 kDa

### Purification Method:

Antigen affinity purification

### Recommended Dilutions:

WB 1:500-1:1000

IP 0.5-4.0 ug for 1.0-3.0 mg of total protein lysate

IHC 1:20-1:200

IF-P 1:50-1:500

## Applications

### Tested Applications:

WB, IHC, IF-P, IP, ELISA

### Cited Applications:

WB, IHC, IF, IP

### Species Specificity:

human, mouse, rat

### Cited Species:

human, mouse, rat

### Positive Controls:

WB: C6 cells, A549 cells, MCF-7 cells, rat brain tissue, rat heart tissue

IP: A549 cells,

IHC: human testis tissue, human pancreas cancer tissue

IF-P: human testis tissue, mouse testis tissue

**Note-IHC: suggested antigen retrieval with TE buffer pH 9.0; (\*) Alternatively, antigen retrieval may be performed with citrate buffer pH 6.0**

## Background Information

SERPINE2 also called protease nexin-1 or glial-derived neurite promoting factor, is a member of the serine protease inhibitor (SERPIN) superfamily. It would be a potent inhibitor of the urokinase-plasminogen activator (uPA), tissue-type PA (tPA), thrombin, trypsin, factor Xia, and prostasin. SERPINE2 is widely expressed in various tissues, including endothelial cells, fibroblasts, smooth muscle cells, tumor cells, glial cells, neurons, and placental cells.

## Notable Publications

Author	Pubmed ID	Journal	Application
Wei Cai	36170234	Autophagy	IP
Jingjing Zhang	34648881	Cancer Lett	WB, IHC, IP
Mary Ann Stepp	30446696	Sci Rep	IF

## Storage

### Storage:

Store at -20°C. Stable for one year after shipment.

### Storage Buffer:

PBS with 0.02% sodium azide and 50% glycerol pH 7.3.

Aliquoting is unnecessary for -20°C storage

\*\*\* 20ul sizes contain 0.1% BSA

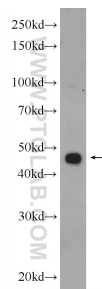
For technical support and original validation data for this product please contact:

T: 1 (888) 4PTGLAB (1-888-478-4522) (toll free in USA), or 1(312) 455-8498 (outside USA)

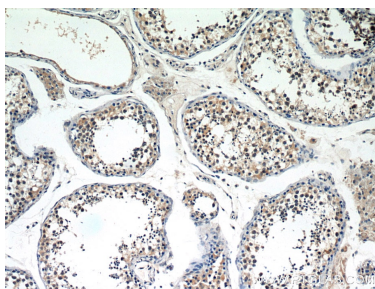
E: [proteintech@ptglab.com](mailto:proteintech@ptglab.com)  
W: [ptglab.com](http://ptglab.com)

This product is exclusively available under Proteintech Group brand and is not available to purchase from any other manufacturer.

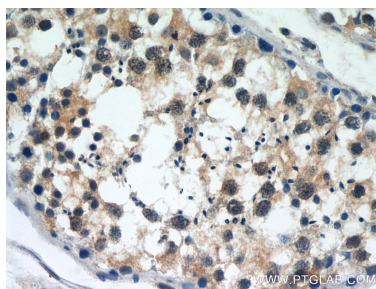
Selected Validation Data



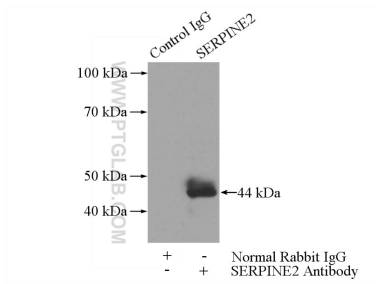
C6 cells were subjected to SDS PAGE followed by western blot with 11303-1-AP (SERPINE2 Antibody) at dilution of 1:600 incubated at room temperature for 1.5 hours.



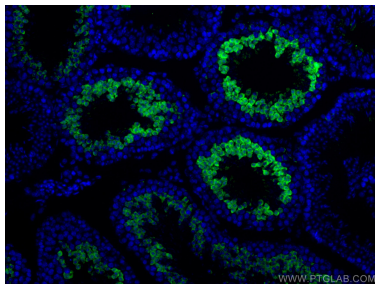
Immunohistochemical analysis of paraffin-embedded human testis slide using 11303-1-AP (SERPINE2 Antibody) at dilution of 1:50.



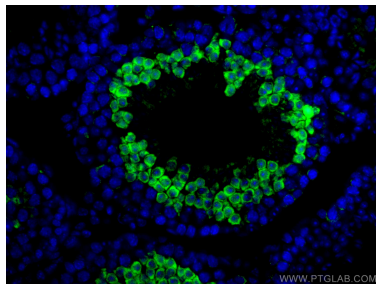
Immunohistochemical analysis of paraffin-embedded human testis slide using 11303-1-AP (SERPINE2 Antibody) at dilution of 1:50.



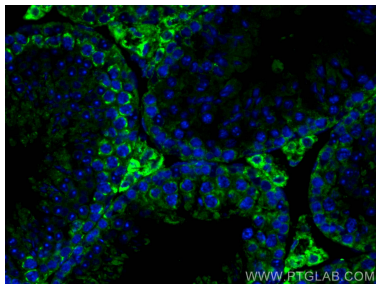
IP result of anti-SERPINE2 (IP:11303-1-AP, 3ug; Detection:11303-1-AP 1:300) with A549 cells lysate 2800ug.



Immunofluorescent analysis of (4% PFA) fixed human testis tissue using SERPINE2 antibody (11303-1-AP) at dilution of 1:200 and CoraLite®488-Conjugated Goat Anti-Rabbit IgG(H+L).



Immunofluorescent analysis of (4% PFA) fixed human testis tissue using SERPINE2 antibody (11303-1-AP) at dilution of 1:200 and CoraLite®488-Conjugated Goat Anti-Rabbit IgG(H+L).



Immunofluorescent analysis of (4% PFA) fixed mouse testis tissue using SERPINE2 antibody (11303-1-AP) at dilution of 1:200 and CoraLite®488-Conjugated Goat Anti-Rabbit IgG(H+L).