

For Research Use Only

LAT Polyclonal antibody

Catalog Number: 11326-1-AP **9 Publications**



Basic Information

Catalog Number: 11326-1-AP	GenBank Accession Number: BC011563	Purification Method: Antigen affinity purification
Size: 150ul , Concentration: 300 ug/ml by Nanodrop and 173 ug/ml by Bradford method using BSA as the standard;	GeneID (NCBI): 27040	Recommended Dilutions: WB 1:500-1:2000
Source: Rabbit	UNIPROT ID: O43561	IP 0.5-4.0 ug for 1.0-3.0 mg of total protein lysate
Isotype: IgG	Full Name: linker for activation of T cells	IHC 1:50-1:500
Immunogen Catalog Number: AG1868	Calculated MW: 262 aa, 28 kDa	IF/ICC 1:200-1:800
	Observed MW: 36-38 kDa	

Applications

Tested Applications: WB, IHC, IF/ICC, IP, ELISA	Positive Controls:
Cited Applications: WB, IHC	WB : Jurkat cells, mouse thymus
Species Specificity: human, mouse	IP : Jurkat cells,
Cited Species: human, mouse	IHC : human thymus tissue,
	IF/ICC : Jurkat cells,
Note-IHC: suggested antigen retrieval with TE buffer pH 9.0; (*) Alternatively, antigen retrieval may be performed with citrate buffer pH 6.0	

Background Information

LAT is a membrane-localized adaptor protein which is primarily concentrated in microdomains by palmitoylation. LAT plays a central role in T-cell activation by nucleating signaling complexes that are critical for the propagation of T-cell signals from the plasma membrane to the cellular interior. In addition to being a positive regulator of T cell signaling, LAT also recruits several negative regulatory proteins, including kinases, phosphatases, and ubiquitin ligases, which ultimately leads to signal termination. LAT is subject to ubiquitylation, and ubiquitin-resistant mutants of LAT display enhanced signaling.

Notable Publications

Author	Pubmed ID	Journal	Application
Yuzi Xu	33737696	Sci Rep	IHC
Bin Shi	35355718	Front Pharmacol	WB
Xia Ke	26202642	Hepatol Int	IHC

Storage

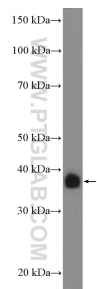
Storage:
Store at -20°C. Stable for one year after shipment.
Storage Buffer:
PBS with 0.02% sodium azide and 50% glycerol pH 7.3.
Aliquoting is unnecessary for -20°C storage

*** 20ul sizes contain 0.1% BSA

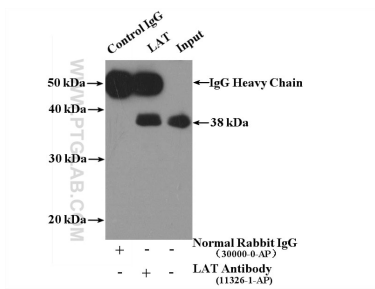
For technical support and original validation data for this product please contact:
T: 1 (888) 4PTGLAB (1-888-478-4522) (toll free in USA), or 1(312) 455-8498 (outside USA)
E: proteintech@ptglab.com
W: ptglab.com

This product is exclusively available under Proteintech Group brand and is not available to purchase from any other manufacturer.

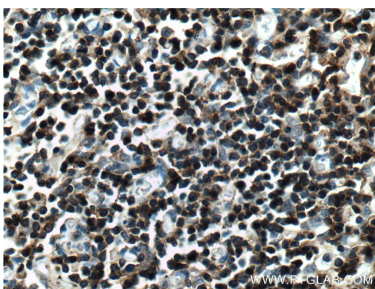
Selected Validation Data



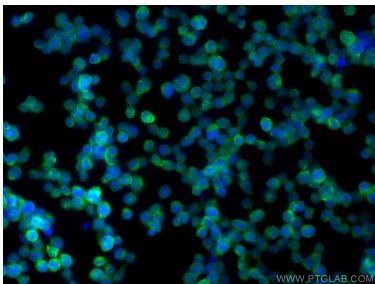
Jurkat cells were subjected to SDS PAGE followed by western blot with 11326-1-AP (LAT Antibody) at dilution of 1:1000 incubated at room temperature for 1.5 hours.



IP result of anti-LAT (IP:11326-1-AP, 4ug; Detection:11326-1-AP 1:1000) with Jurkat cells lysate 3600ug.



Immunohistochemical analysis of paraffin-embedded human thymus tissue slide using 11326-1-AP (LAT Antibody) at dilution of 1:200 (under 40x lens). Heat mediated antigen retrieval with Tris-EDTA buffer (pH 9.0).



Immunofluorescent analysis of (4% PFA) fixed Jurkat cells using LAT antibody (11326-1-AP) at dilution of 1:400 and Coralite®488-Conjugated AffiniPure Goat Anti-Rabbit IgG(H+L) (SA00013-2).