

For Research Use Only

# ATRIP Polyclonal antibody

Catalog Number: 11327-1-AP

Featured Product

6 Publications



## Basic Information

### Catalog Number:

11327-1-AP

### Size:

150ul, Concentration: 500 ug/ml by Nanodrop;

### Source:

Rabbit

### Isotype:

IgG

### Immunogen Catalog Number:

AG1869

### GenBank Accession Number:

BC014153

### GeneID (NCBI):

84126

### UNIPROT ID:

Q8WXE1

### Full Name:

ATR interacting protein

### Calculated MW:

791 aa, 86 kDa

### Observed MW:

86-90 kDa

### Purification Method:

Antigen affinity purification

### Recommended Dilutions:

WB: 1:2000-1:16000

IP: 0.5-4.0 ug for 1.0-3.0 mg of total protein lysate

## Applications

### Tested Applications:

WB, IP, ELISA

### Cited Applications:

WB, IHC, CoIP

### Species Specificity:

human, mouse, rat

### Cited Species:

human, mouse

### Positive Controls:

WB : HeLa cells, MCF-7 cells, PC-3 cells

IP : HeLa cells,

## Background Information

ATRIP (ATR Interacting Protein) and ATR signalling complex is a central mediator of the replicative stress response (RSR), and mutations in both genes have been reported in Seckel syndrome.

## Notable Publications

Author	Pubmed ID	Journal	Application
Jill E Hunter	36240066	Biochem J	WB
Jill E Hunter	36240065	Biochem J	WB
Li-Fei Gu	32719603	Front Pharmacol	WB

## Storage

### Storage:

Store at -20°C. Stable for one year after shipment.

### Storage Buffer:

PBS with 0.02% sodium azide and 50% glycerol, pH7.3

Aliquoting is unnecessary for -20°C storage

\*\*\* 20ul sizes contain 0.1% BSA

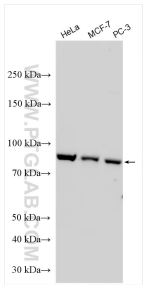
For technical support and original validation data for this product please contact:

T: 1 (888) 4PTGLAB (1-888-478-4522) (toll free in USA), or 1(312) 455-8498 (outside USA)

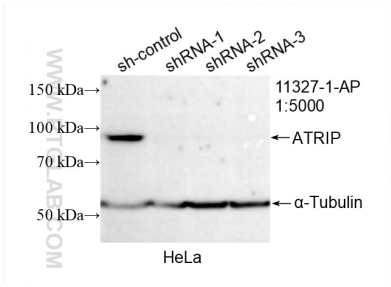
E: [proteintech@ptglab.com](mailto:proteintech@ptglab.com)  
W: [ptglab.com](http://ptglab.com)

This product is exclusively available under Proteintech Group brand and is not available to purchase from any other manufacturer.

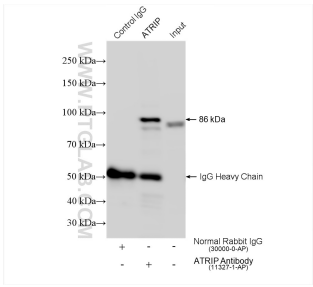
Selected Validation Data



Various lysates were subjected to SDS PAGE followed by western blot with 11327-1-AP (ATRIP antibody) at dilution of 1:8000 incubated at room temperature for 1.5 hours.



WB result of ATRIP antibody (11327-1-AP; 1:5000; incubated at room temperature for 1.5 hours) with sh-Control and sh-ATRIP transfected HeLa cells.



IP result of anti-ATRIP (IP:11327-1-AP, 4ug; Detection:11327-1-AP 1:5000) with HeLa cells lysate 1200 ug.