

For Research Use Only

PTPN1/PTP1B Polyclonal antibody

Catalog Number: 11334-1-AP

Featured Product

39 Publications



Basic Information

Catalog Number:

11334-1-AP

Size:

150ul, Concentration: 1000 ug/ml by Nanodrop;

Source:

Rabbit

Isotype:

IgG

Immunogen Catalog Number:

AG1878

GenBank Accession Number:

BC015660

GeneID (NCBI):

5770

UNIPROT ID:

P18031

Full Name:

protein tyrosine phosphatase, non-receptor type 1

Calculated MW:

435 aa, 50 kDa

Observed MW:

45-55 kDa

Purification Method:

Antigen affinity purification

Recommended Dilutions:

WB 1:2000-1:10000

IP 0.5-4.0 ug for 1.0-3.0 mg of total protein lysate

IHC 1:20-1:200

IF/ICC 1:50-1:500

Applications

Tested Applications:

WB, IHC, IF/ICC, IP, ELISA

Cited Applications:

WB, IHC, IF, IP, CoIP

Species Specificity:

human, mouse, rat

Cited Species:

human, mouse, rat, monkey

Positive Controls:

WB: Sp2/0 cells, HeLa cells, mouse liver tissue, THP-1 cells, Jurkat cells, C6 cells, NIH/3T3 cells, rat liver tissue, mouse placenta tissue

IP: A431 cells,

IHC: human prostate cancer tissue,

IF/ICC: BxPC-3 cells,

Note-IHC: suggested antigen retrieval with TE buffer pH 9.0; (*) Alternatively, antigen retrieval may be performed with citrate buffer pH 6.0

Background Information

PTPN1 (protein tyrosine phosphatase, non-receptor type 1) is also named as PTP1B or PTP-1B, and belongs to the protein-tyrosine phosphatase family and non-receptor class 1 subfamily. PTPN1 is involved in the regulation of several important physiological pathways, which regulates both INS and leptin signaling, and interacts with the epidermal and platelet-derived growth factor receptors (PMID: 20101100). The gene might harbor variants influencing susceptibility to INS resistance and type 2 diabetes (PMID:15919813). The molecular mass of PTPN1 is 50 kDa, but sometimes some truncated forms can be detected as 48, 46, 39, 37 kDa due to non-specific proteolytic cleavage of PTP1B in different cells (PMID: 18253097).

Notable Publications

Author	Pubmed ID	Journal	Application
Shohei Takaoka	34646989	iScience	WB
Jianzhi Wu	34566665	Front Pharmacol	WB
Lei Yang	31711802	Toxicol Lett	WB

Storage

Storage:

Store at -20°C. Stable for one year after shipment.

Storage Buffer:

PBS with 0.02% sodium azide and 50% glycerol pH 7.3.

Aliquoting is unnecessary for -20°C storage

*** 20ul sizes contain 0.1% BSA

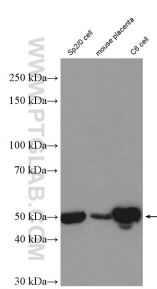
For technical support and original validation data for this product please contact:

T: 1 (888) 4PTGLAB (1-888-478-4522) (toll free in USA), or 1(312) 455-8498 (outside USA)

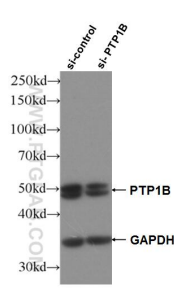
E: proteintech@ptglab.com
W: ptglab.com

This product is exclusively available under Proteintech Group brand and is not available to purchase from any other manufacturer.

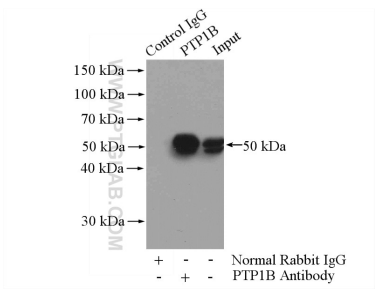
Selected Validation Data



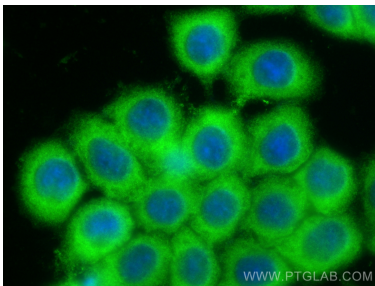
Sp2/0 cells were subjected to SDS PAGE followed by western blot with 11334-1-AP (PTP1B antibody) at dilution of 1:5000 incubated at room temperature for 1.5 hours.



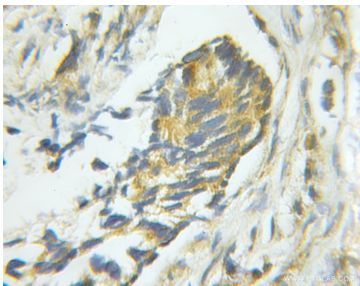
WB result of PTP1B antibody (11334-1-AP; 1:30000; incubated at room temperature for 1.5 hours) with sh-Control and sh-PTP1B transfected Jurkat cells.



IP result of anti-PTP1B (IP:11334-1-AP, 4ug; Detection:11334-1-AP 1:500) with A431 cells lysate 2400ug.



Immunofluorescent analysis of (-20°C Ethanol) fixed BxPC-3 cells using PTP1B antibody (11334-1-AP) at dilution of 1:200 and Multi-rAb CoraLite ® Plus 488-Goat Anti-Rabbit Recombinant Secondary Antibody (H+L) (RGAR002).



Immunohistochemical analysis of paraffin-embedded human prostate cancer using 11334-1-AP (PTP1B antibody) at dilution of 1:50 (under 10x lens).