

For Research Use Only

HDGF Polyclonal antibody

Catalog Number: 11344-1-AP

Featured Product

24 Publications



Basic Information

Catalog Number:

11344-1-AP

Size:

150ul, Concentration: 500 ug/ml by Nanodrop and 133 ug/ml by Bradford method using BSA as the standard;

Source:

Rabbit

Isotype:

IgG

Immunogen Catalog Number:

AG1893

GenBank Accession Number:

BC018991

GeneID (NCBI):

3068

UNIPROT ID:

P51858

Full Name:

hepatoma-derived growth factor (high-mobility group protein 1-like)

Calculated MW:

26 kDa

Observed MW:

40-45 kDa

Purification Method:

Antigen affinity purification

Recommended Dilutions:

WB 1:5000-1:50000

IP 0.5-4.0 ug for 1.0-3.0 mg of total protein lysate

IHC 1:20-1:200

IF/ICC 1:50-1:500

Applications

Tested Applications:

WB, IHC, IF/ICC, IP, ELISA

Cited Applications:

WB, IHC, IF, IP, CoIP, ChIP

Species Specificity:

human

Cited Species:

human, mouse

Positive Controls:

WB: HepG2 cells, HEK-293T cells, Hela cells

IP: HepG2 cells,

IHC: human lung cancer tissue, human ovary tumor tissue, human liver cancer tissue, human colon cancer tissue

IF/ICC: HEK-293 cells,

Note-IHC: suggested antigen retrieval with TE buffer pH 9.0; (*) Alternatively, antigen retrieval may be performed with citrate buffer pH 6.0

Background Information

HDGF, also named as HMG1L2, belongs to the HDGF family. HDGF is a mitogen for many cell types with nuclear localization necessary for its mitogenic activity. HDGF has also been identified as an important prognostic marker in pathologic cell growth, as it is overexpressed in a number of cancers with expression linked to a poor outcome in lung, esophageal, pancreatic and hepatic cancer. HDGF is highly expressed in human NSCLC tissues, predicting worse prognosis in resected NSCLCs. It might be useful molecular biomarker for predicting the prognosis of resected NSCLCs.

Notable Publications

Author	Pubmed ID	Journal	Application
Zhou Yanyan Y	20846397	Diagn Pathol	WB, IHC
Honghong Jiang	31612005	Oncol Lett	IHC
Longbin Zheng	36265285	Biochem Biophys Res Commun	WB

Storage

Storage:

Store at -20°C. Stable for one year after shipment.

Storage Buffer:

PBS with 0.02% sodium azide and 50% glycerol pH 7.3.

Aliquoting is unnecessary for -20°C storage

*** 20ul sizes contain 0.1% BSA

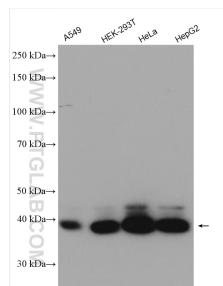
For technical support and original validation data for this product please contact:

T: 1 (888) 4PTGLAB (1-888-478-4522) (toll free in USA), or 1(312) 455-8498 (outside USA)

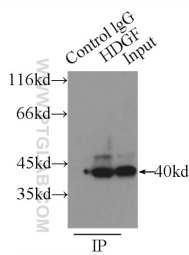
E: proteintech@ptglab.com
W: ptglab.com

This product is exclusively available under Proteintech Group brand and is not available to purchase from any other manufacturer.

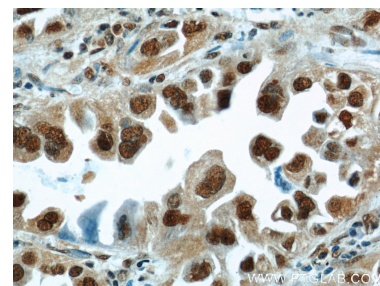
Selected Validation Data



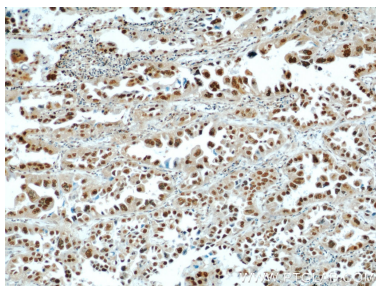
Various lysates were subjected to SDS PAGE followed by western blot with 11344-1-AP (HDGF antibody) at dilution of 1:20000 incubated at room temperature for 1.5 hours.



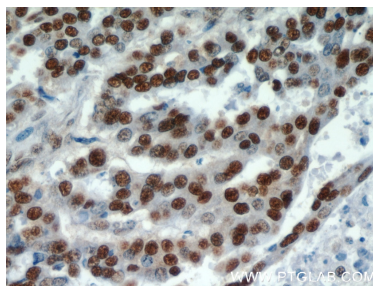
IP result of anti-HDGF (IP:11344-1-AP, 3ug; Detection:11344-1-AP 1:1000) with HepG2 cells lysate 3000ug.



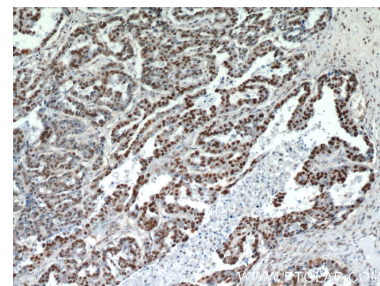
Immunohistochemical analysis of paraffin-embedded human lung cancer using 11344-1-AP (HDGF antibody) at dilution of 1:100 (under 40x lens).



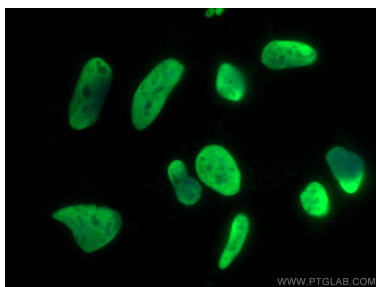
Immunohistochemical analysis of paraffin-embedded human lung cancer using 11344-1-AP (HDGF antibody) at dilution of 1:100 (under 10x lens).



Immunohistochemical analysis of paraffin-embedded human ovary tumor using 11344-1-AP (HDGF antibody) at dilution of 1:100 (under 40x lens).



Immunohistochemical analysis of paraffin-embedded human ovary tumor using 11344-1-AP (HDGF antibody) at dilution of 1:100 (under 10x lens).



Immunofluorescent analysis of (4% PFA) fixed HEK-293 cells using HDGF antibody (11344-1-AP) at dilution of 1:200 and CoraLite®488-Conjugated AffiniPure Goat Anti-Rabbit IgG(H+L).