

For Research Use Only

ARHGEF1 Polyclonal antibody

Catalog Number: 11363-1-AP

5 Publications



Basic Information

Catalog Number:

11363-1-AP

Size:

150ul, Concentration: 800 ug/ml by Nanodrop and 387 ug/ml by Bradford method using BSA as the standard;

Source:

Rabbit

Isotype:

IgG

Immunogen Catalog Number:

AG1905

GenBank Accession Number:

BC011726

GeneID (NCBI):

9138

UNIPROT ID:

Q92888

Full Name:

Rho guanine nucleotide exchange factor (GEF) 1

Calculated MW:

912 aa, 102 kDa

Observed MW:

102-110 kDa

Purification Method:

Antigen affinity purification

Recommended Dilutions:

WB 1:500-1:2000

IP 0.5-4.0 ug for 1.0-3.0 mg of total protein lysate

IHC 1:20-1:200

IF/ICC 1:200-1:800

Applications

Tested Applications:

WB, IHC, IF/ICC, IP, ELISA

Cited Applications:

WB, ColP

Species Specificity:

human, mouse

Cited Species:

human, mouse

Note-IHC: suggested antigen retrieval with TE buffer pH 9.0; (*) Alternatively, antigen retrieval may be performed with citrate buffer pH 6.0

Positive Controls:

WB : HEK-293 cells, HeLa cells, HepG2 cells, human brain tissue, human spleen tissue, Jurkat cells, K-562 cells, mouse spleen tissue

IP : HEK-293 cells,

IHC : human colon tissue,

IF/ICC : A549 cells,

Notable Publications

Author	Pubmed ID	Journal	Application
P V Ryder	23676666	Mol Biol Cell	WB
Silvana Konermann	25494202	Nature	WB
Wanying Zhang	38823764	Cancer Lett	WB

Storage

Storage:

Store at -20°C. Stable for one year after shipment.

Storage Buffer:

PBS with 0.02% sodium azide and 50% glycerol pH 7.3.

Aliquoting is unnecessary for -20°C storage

*** 20ul sizes contain 0.1% BSA

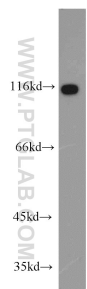
For technical support and original validation data for this product please contact:

T: 1 (888) 4PTGLAB (1-888-478-4522) (toll free in USA), or 1(312) 455-8498 (outside USA)

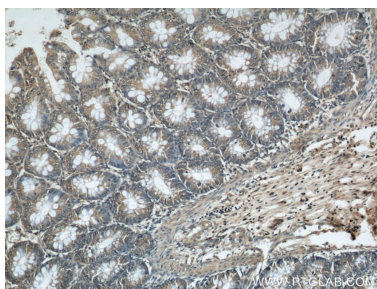
E: proteintech@ptglab.com
W: ptglab.com

This product is exclusively available under Proteintech Group brand and is not available to purchase from any other manufacturer.

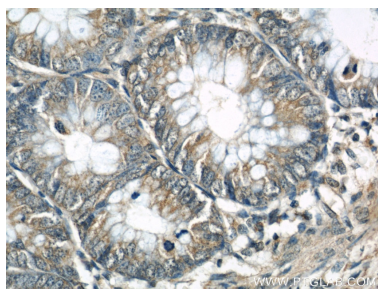
Selected Validation Data



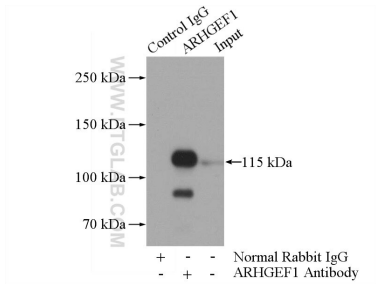
HEK-293 cells were subjected to SDS PAGE followed by western blot with 11363-1-AP (ARHGEF1 antibody) at dilution of 1:1000 incubated at room temperature for 1.5 hours.



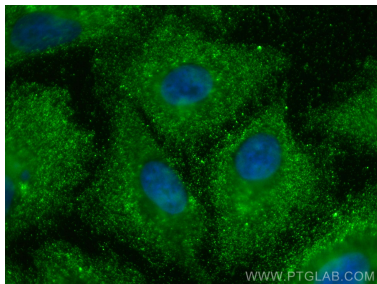
Immunohistochemical analysis of paraffin-embedded human colon using 11363-1-AP (ARHGEF1 antibody) at dilution of 1:50 (under 10x lens).



Immunohistochemical analysis of paraffin-embedded human colon using 11363-1-AP (ARHGEF1 antibody) at dilution of 1:50 (under 40x lens).



IP result of anti-ARHGEF1 (IP:11363-1-AP, 4ug; Detection:11363-1-AP 1:1000) with HEK-293 cells lysate 2800ug.



Immunofluorescent analysis of (-20°C Methanol) fixed A549 cells using ARHGEF1 antibody (11363-1-AP) at dilution of 1:400 and Coralite®488-Conjugated Goat Anti-Rabbit IgG(H+L).