

For Research Use Only

RYBP Polyclonal antibody

Catalog Number: 11365-1-AP

1 Publications



Basic Information

Catalog Number:

11365-1-AP

Size:

150ul, Concentration: 400 ug/ml by Nanodrop and 300 ug/ml by Bradford method using BSA as the standard;

Source:

Rabbit

Isotype:

IgG

Immunogen Catalog Number:

AG1908

GenBank Accession Number:

BC014959

GeneID (NCBI):

23429

UNIPROT ID:

Q8N488

Full Name:

RING1 and YY1 binding protein

Calculated MW:

228 aa, 25 kDa

Observed MW:

32 kDa

Purification Method:

Antigen affinity purification

Recommended Dilutions:

WB 1:500-1:1000

IP 0.5-4.0 ug for 1.0-3.0 mg of total protein lysate

Applications

Tested Applications:

WB, IP, ELISA

Cited Applications:

WB

Species Specificity:

human, mouse, rat

Cited Species:

human

Positive Controls:

WB : K-562 cells,

IP : mouse spleen tissue,

Background Information

Polycomb repressive complexes (PRCs) are important chromatin regulators of embryonic stem (ES) cell function [PMID:22269950]. RYBP binds Polycomb H2A monoubiquitin ligases Ring1A and Ring1B and has been suggested to assist PRC localization to their targets. RYBP, firstly identified as a direct interactor with Ring1A, acts as transcriptional repressor in reporter assays, both in tissue culture cells and in the fly [PMID:16125914]

Notable Publications

| Author | Pubmed ID | Journal | Application |
|--------------|-----------|------------|-------------|
| Xianchun Lan | 35933409 | Nat Commun | WB |

Storage

Storage:

Store at -20°C. Stable for one year after shipment.

Storage Buffer:

PBS with 0.02% sodium azide and 50% glycerol pH 7.3.

Aliquoting is unnecessary for -20°C storage

*** 20ul sizes contain 0.1% BSA

For technical support and original validation data for this product please contact:

T: 1 (888) 4PTGLAB (1-888-478-4522) (toll free in USA), or 1(312) 455-8498 (outside USA)

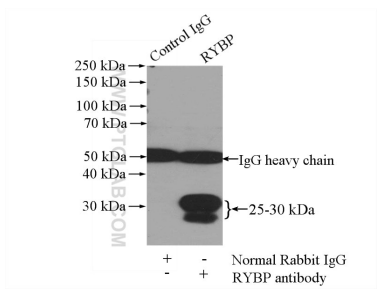
E: proteintech@ptglab.com
W: ptglab.com

This product is exclusively available under Proteintech Group brand and is not available to purchase from any other manufacturer.

Selected Validation Data



K-562 cells were subjected to SDS PAGE followed by western blot with 11365-1-AP (RYBP antibody) at dilution of 1:500 incubated at room temperature for 1.5 hours.



IP result of anti-RYBP (IP:11365-1-AP, 4ug; Detection:11365-1-AP 1:300) with mouse spleen tissue lysate 4000ug.